

Weather Forecast For Fishery and Naval Community

Marine weather forecast for sea areas around the island

Issued at 04.00 p.m. on 20 September 2020

A low pressure area is forming over Northeast Bay of Bengal.

Strong or very strong gusty winds heavy rainfalls and rough or very rough seas can be expected over Central, Northeast and Eastern Bay of Bengal Sea areas (06N-16N, 83E-96E) during next few days.

Naval and fishing communities are advised not to venture into aforementioned deep sea of Bay of Bengal until 22nd of September. Those who are in deep sea are advised to reach safer area.

Naval and fishing communities are requested to be vigilant in this regard.

Bulletin No: **04.**

COLOR: **Amber**

WW/O/20/09/20/04

Strong Winds and Rough Sea areas Advisory

Issued by the Natural Hazards Early Warning Centre

Issued at 01.00 p.m. 20 September 2020, Valid until 01.00 p.m. 21 September 2020

For the Sea areas around the island

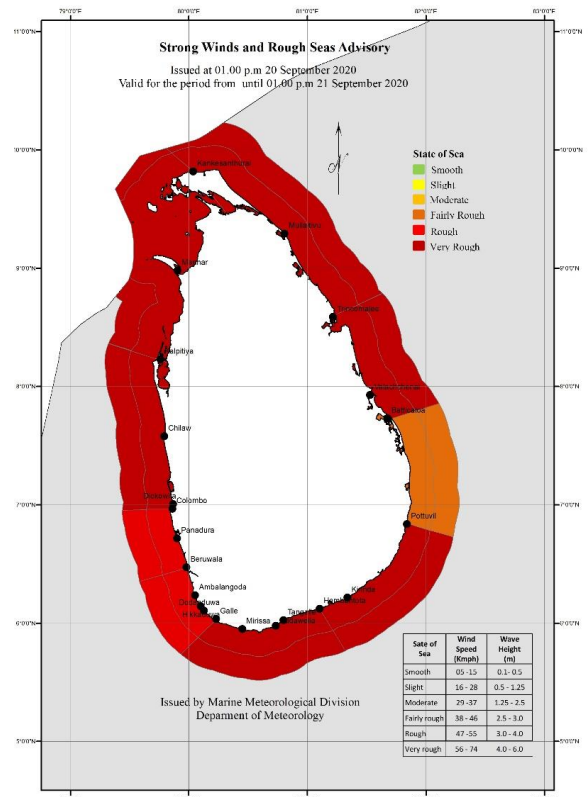
PLEASE BE AWARE

Wind speed can increase up to **(60-70) kmph** in the deep and shallow sea areas off the coasts extending from Batticaloa to Colombo via Trincomalee, Kankasanturai and Puttalam and in the sea area extending from Galle to Pottuvil via Hambantota. These sea areas can be rough or very rough at times.

Wind speed can increase up to **(50-60) kmph** in the deep and shallow sea areas off the coasts extending from Colombo to Galle. These sea areas can be fairly rough or rough at times.

There is a possibility that near shore sea areas off the coast extending from Kalpitiya to Pottuvil via Colombo, Galle and Hambantota may experience surges due to the effect of swell waves, having 2.5 – 3.0 m height

Fishing and naval communities are requested to be vigilant in this regard.



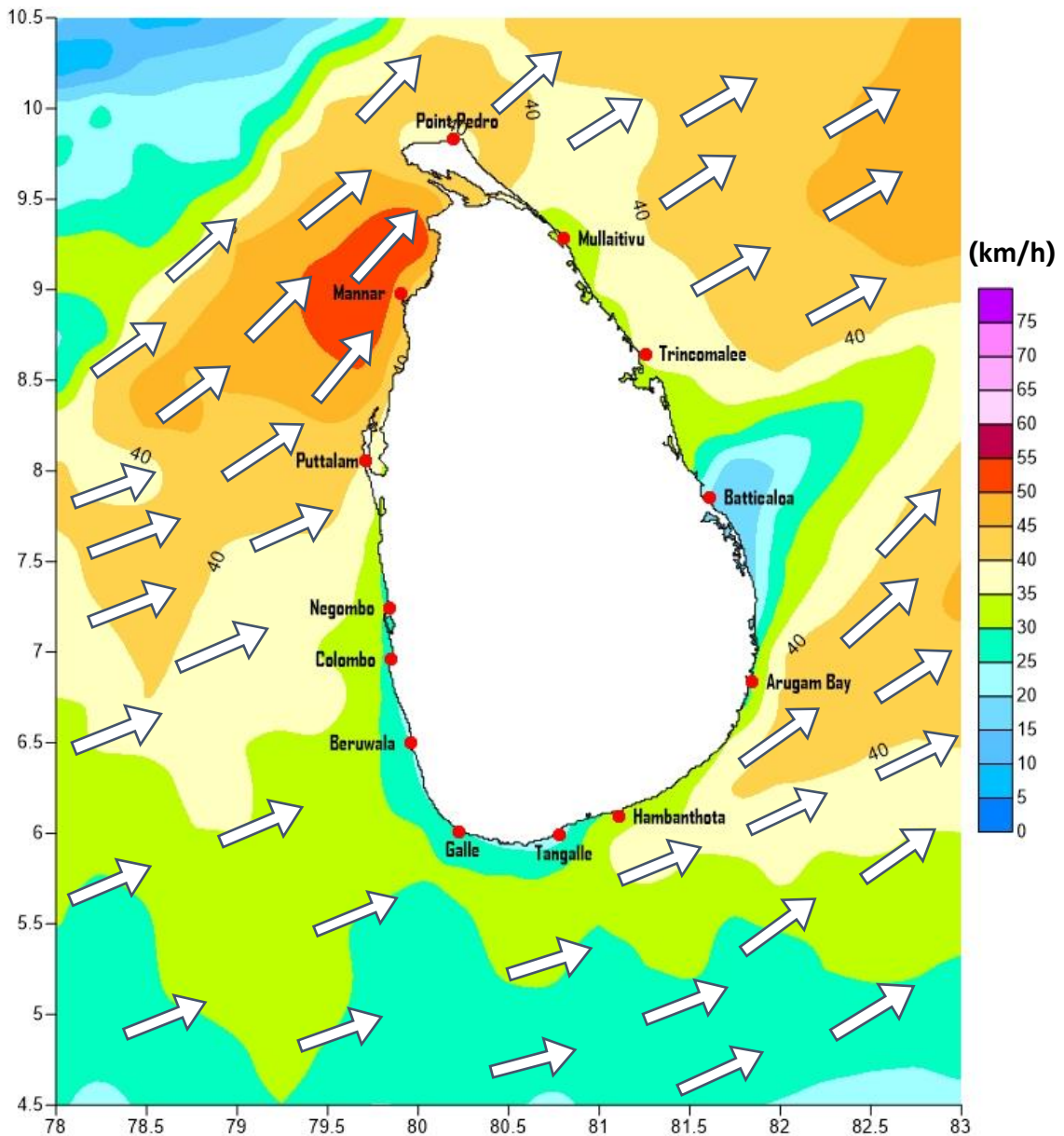
Marine Division
Department of Meteorology
Colombo 07, Sri Lanka
+94 112686686

For Safer Shipping



Weather Forecast For Fishery and Naval Community

Marine weather forecast for 05.30 a.m. to 05.30 p.m. on 21/09/2020



Marine Division
Department of Meteorology
Colombo 07, Sri Lanka
+94 112686686

For Safer Shipping



Weather Forecast For Fishery and Naval Community

Sea Area	Wind Speed	Wave Height	Sea Condition	Weather
Puttalam to Mannar	35-45 kmph; 60-70 kmph at times.	2.25-3.0 m; 5.5 m at times.	Fairly rough; Rough or very rough at times.	Few showers are likely
Mannar to Kankasanthurai	35-45 kmph; 60-70 kmph at times.	2.25-3.0 m; 5.5 m at times.	Fairly rough; Rough or very rough at times.	Few showers are likely
Kankasanthurai to Trincomalee	35-45 kmph; 55-65 kmph at times.	2.25-3.0 m; 5.0 m at times.	Fairly rough; Rough at times.	Showers or thundershowers will occur at several places.
Trincomalee to Batticaloa	30-40 kmph; 50-60 kmph at times.	1.25-2.5 m; 4.5m at times.	Moderate; Fairly rough at times.	Few showers are likely
Batticaloa to Pottuvil	30-40 kmph; 50-60 kmph at times.	1.25-2.5 m; 4.5m at times.	Moderate; Fairly rough at times.	Few showers are likely
Pottuvil to Hambantota	35-45 kmph; 60-70 kmph at times.	2.25-3.0 m; 5.5 m at times.	Fairly rough; Rough or very rough at times.	Showers or thundershowers will occur at several places.
Hambantota to Galle	35-45 kmph; 55-65 kmph at times.	2.25-3.0 m; 5.0 m at times.	Fairly rough; Rough at times.	Showers or thundershowers will occur at several places.
Galle to Colombo	30-40 kmph; 50-60 kmph at times.	1.25-2.5 m; 4.5m at times.	Moderate; Fairly rough at times.	Showers or thundershowers will occur at times.
Colombo to Puttalam	35-45 kmph; 55-65 kmph at times.	2.25-3.0 m; 5.0 m at times.	Fairly rough; Rough at times.	Showers or thundershowers will occur at several places.

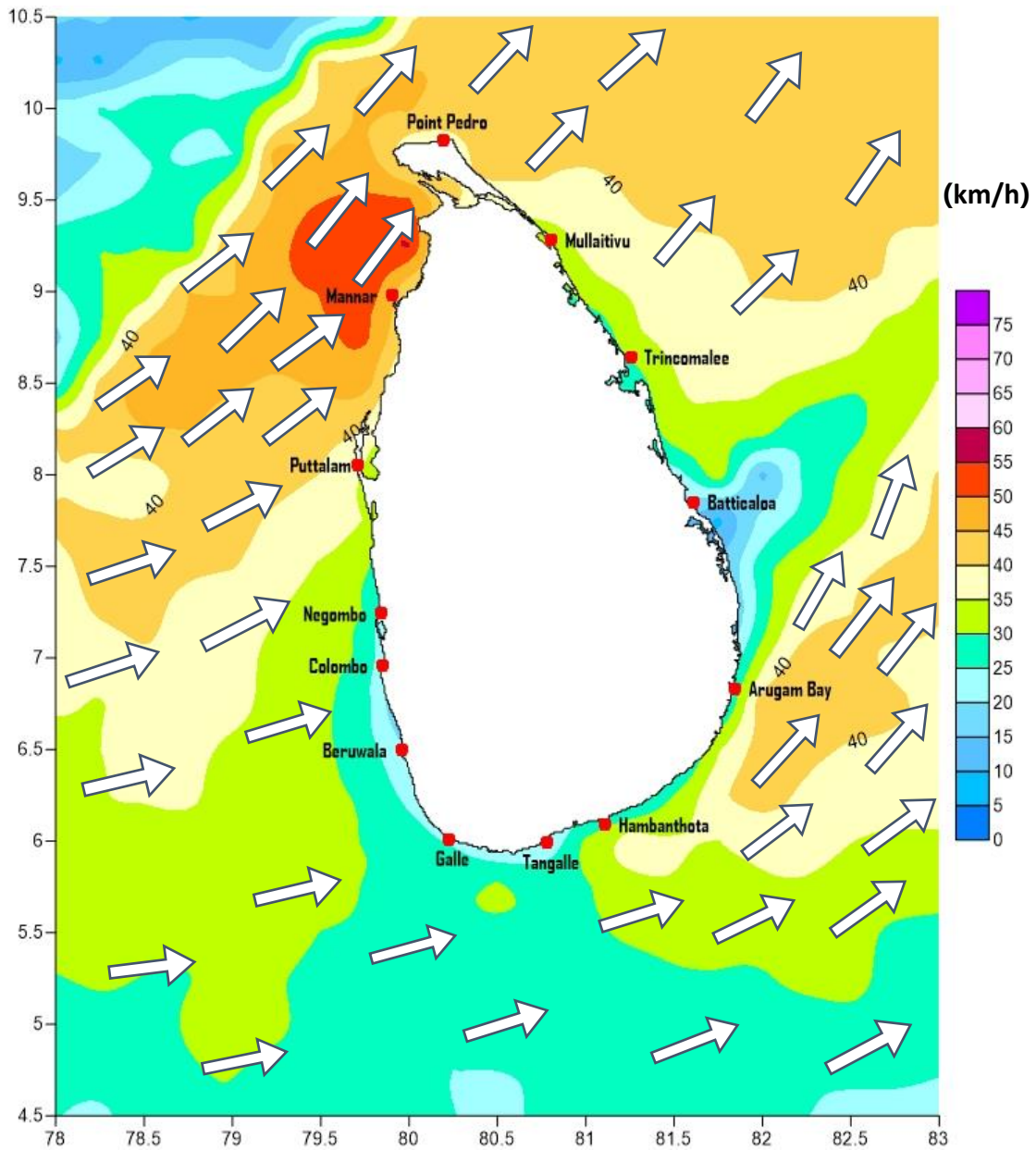
Marine Division
Department of Meteorology
Colombo 07, Sri Lanka
+94 112686686

For Safer Shipping



Weather Forecast For Fishery and Naval Community

Marine weather forecast for 05.30 p.m. on 21/09/2020 to 05.30 a.m. on 22/09/2020



Marine Division
Department of Meteorology
Colombo 07, Sri Lanka
+94 112686686

For Safer Shipping



Weather Forecast For Fishery and Naval Community

Sea Area	Wind Speed	Wave Height	Sea Condition	Weather
Puttalam to Mannar	35-45 kmph; 60-70 kmph at times.	2.25-3.0 m; 5.5 m at times.	Fairly rough; Rough or very rough at times.	Showers or thundershowers may occur at several places.
Mannar to Kankasanthurai	35-45 kmph; 60-70 kmph at times.	2.25-3.0 m; 5.5 m at times.	Fairly rough; Rough or very rough at times.	Showers or thundershowers may occur at several places.
Kankasanthurai to Trincomalee	35-45 kmph; 55-65 kmph at times.	2.25-3.0 m; 5.0 m at times.	Fairly rough; Rough at times.	Few showers are likely
Trincomalee to Batticaloa	30-40 kmph; 50-60 kmph at times.	1.25-2.5 m; 4.5m at times.	Moderate; Fairly rough at times.	Few showers are likely
Batticaloa to Pottuvil	30-40 kmph; 50-60 kmph at times.	1.25-2.5 m; 4.5m at times.	Moderate; Fairly rough at times.	Few showers are likely
Pottuvil to Hambantota	35-45 kmph; 60-70 kmph at times.	2.25-3.0 m; 5.5 m at times.	Fairly rough; Rough or very rough at times.	Showers or thundershowers will occur at several places.
Hambantota to Galle	35-45 kmph; 55-65 kmph at times.	2.25-3.0 m; 5.0 m at times.	Fairly rough; Rough at times.	Showers or thundershowers will occur at several places.
Galle to Colombo	30-40 kmph; 50-60 kmph at times.	1.25-2.5 m; 4.5m at times.	Moderate; Fairly rough at times.	Showers or thundershowers will occur at times.
Colombo to Puttalam	35-45 kmph; 55-65 kmph at times.	2.25-3.0 m; 5.0 m at times.	Fairly rough; Rough at times.	Showers or thundershowers will occur at several places.

****Temporarily strong gusty winds (up to 70-80 kmph) and very rough seas can be expected during thundershowers.**

Marine Division
Department of Meteorology
Colombo 07, Sri Lanka
+94 112686686

For Safer Shipping

