

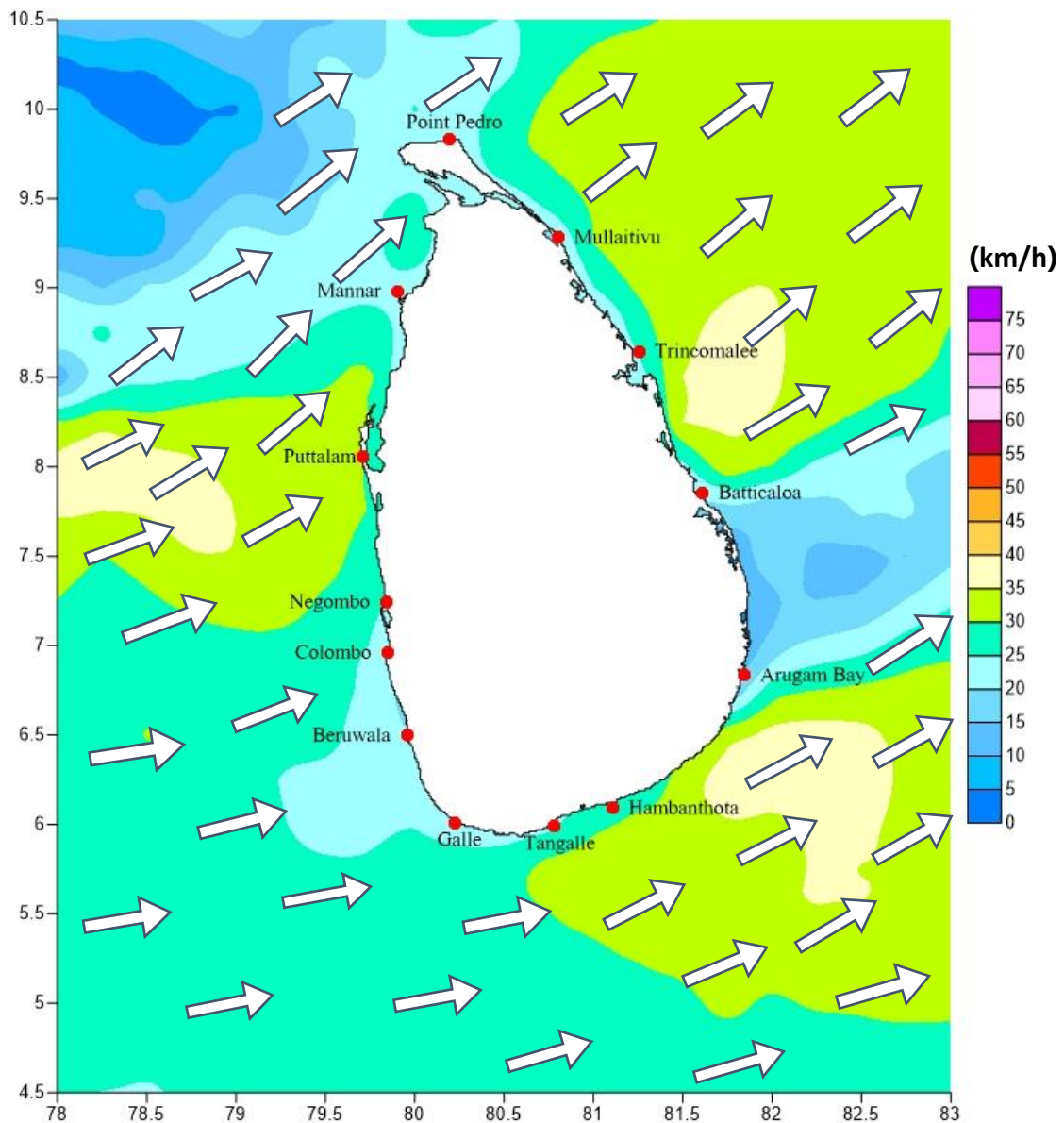
# Weather Forecast For Fishery and Naval Community

## Marine weather forecast for sea areas around the island

Issued at 04.00 p.m. on 12 August 2020

Marine weather forecast for 05.30 a.m. to 05.30 p.m. on 13/08/2020

There is a possibility that near shore sea areas off the coast extending from Beruwala to Hambantota via Galle, may experience surges due to the effect of swell waves, having 2.0 – 2.5 m height (this is not the height of nearshore waves).



Marine Division  
Department of Meteorology  
Colombo 07, Sri Lanka  
+94 112686686

For Safer Shipping



## Weather Forecast For Fishery and Naval Community

| Sea Area                             | Wind Speed                    | Wave Height                 | Sea Condition                    | Weather   |
|--------------------------------------|-------------------------------|-----------------------------|----------------------------------|---|
| <b>Puttalam to Mannar</b>            | 30-40 kmph; 60 kmph at times. | 1.25-2.5 m; 4.5 m at times. | Moderate; Rough at times.        | A few showers are likely.   |
| <b>Mannar to Kankasanthurai</b>      | 30-40 kmph; 60 kmph at times. | 1.25-2.5 m; 4.5 m at times. | Moderate; Rough at times.        | A few showers are likely.   |
| <b>Kankasanthurai to Trincomalee</b> | 30-40 kmph; 50 kmph at times. | 1.25-2.5 m; 3.5m at times.  | Moderate; Fairly rough at times. | Showers or thundershowers may occur at several places in the afternoon. |
| <b>Trincomalee to Batticaloa</b>     | 30-40 kmph; 50 kmph at times. | 1.25-2.5 m; 3.5m at times.  | Moderate; Fairly rough at times. | A few showers are likely.   |
| <b>Batticaloa to Pottuvil</b>        | 30-40 kmph; 50 kmph at times. | 1.25-2.5 m; 3.5m at times.  | Moderate; Fairly rough at times. | A few showers are likely.   |
| <b>Pottuvil to Hambantota</b>        | 30-40 kmph; 60 kmph at times. | 1.25-2.5 m; 4.5 m at times. | Moderate; Rough at times.        | A few showers are likely.   |
| <b>Hambantota to Galle</b>           | 30-40 kmph; 60 kmph at times. | 1.25-2.5 m; 4.5 m at times. | Moderate; Rough at times.        | Showers or thundershowers at several places.                            |
| <b>Galle to Colombo</b>              | 30-40 kmph; 50 kmph at times. | 1.25-2.5 m; 3.5m at times.  | Moderate; Fairly rough at times. | Showers or thundershowers at several places.                            |
| <b>Colombo to Puttalam</b>           | 30-40 kmph; 50 kmph at times. | 1.25-2.5 m; 3.5m at times.  | Moderate; Fairly rough at times. | Showers or thundershowers at several places.                            |

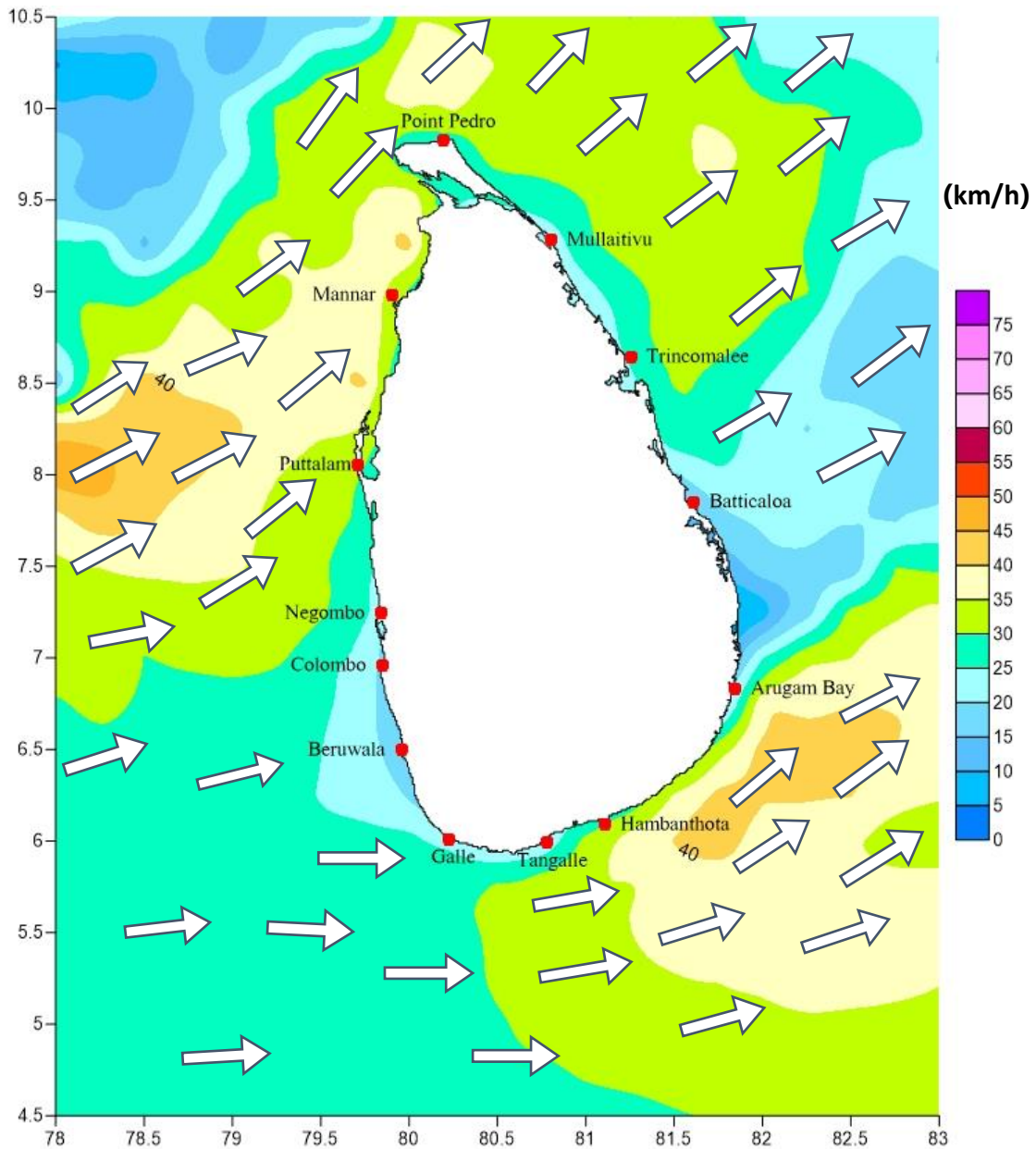
Marine Division  
Department of Meteorology  
Colombo 07, Sri Lanka  
+94 112686686

**For Safer Shipping**



# Weather Forecast For Fishery and Naval Community

Marine weather forecast for 05.30 p.m. on 13/08/2020 to 05.30 a.m. on 14/08/2020



Marine Division  
Department of Meteorology  
Colombo 07, Sri Lanka  
+94 112686686

For Safer Shipping



## Weather Forecast For Fishery and Naval Community

| Sea Area                             | Wind Speed                    | Wave Height                 | Sea Condition                    | Weather   |
|--------------------------------------|-------------------------------|-----------------------------|----------------------------------|---|
| <b>Puttalam to Mannar</b>            | 30-40 kmph; 60 kmph at times. | 1.25-2.5 m; 4.5 m at times. | Moderate; Rough at times.        | A few showers are likely.   |
| <b>Mannar to Kankasanthurai</b>      | 30-40 kmph; 60 kmph at times. | 1.25-2.5 m; 4.5 m at times. | Moderate; Rough at times.        | A few showers are likely.   |
| <b>Kankasanthurai to Trincomalee</b> | 30-40 kmph; 50 kmph at times. | 1.25-2.5 m; 3.5m at times.  | Moderate; Fairly rough at times. | Showers or thundershowers may occur at several places in the night. |
| <b>Trincomalee to Batticaloa</b>     | 30-40 kmph; 50 kmph at times. | 1.25-2.5 m; 3.5m at times.  | Moderate; Fairly rough at times. | A few showers are likely.   |
| <b>Batticaloa to Pottuvil</b>        | 30-40 kmph; 50 kmph at times. | 1.25-2.5 m; 3.5m at times.  | Moderate; Fairly rough at times. | A few showers are likely.   |
| <b>Pottuvil to Hambantota</b>        | 30-40 kmph; 60 kmph at times. | 1.25-2.5 m; 4.5 m at times. | Moderate; Rough at times.        | A few showers are likely.   |
| <b>Hambantota to Galle</b>           | 30-40 kmph; 60 kmph at times. | 1.25-2.5 m; 4.5 m at times. | Moderate; Rough at times.        | Showers or thundershowers at several places.                        |
| <b>Galle to Colombo</b>              | 30-40 kmph; 50 kmph at times. | 1.25-2.5 m; 3.5m at times.  | Moderate; Fairly rough at times. | Showers or thundershowers at several places.                        |
| <b>Colombo to Puttalam</b>           | 30-40 kmph; 50 kmph at times. | 1.25-2.5 m; 3.5m at times.  | Moderate; Fairly rough at times. | Showers or thundershowers at several places.                        |

**\*\*Temporarily strong gusty winds (up to 70-80 kmph) and very rough seas can be expected during thundershowers.**

Marine Division  
Department of Meteorology  
Colombo 07, Sri Lanka  
+94 112686686

**For Safer Shipping**

