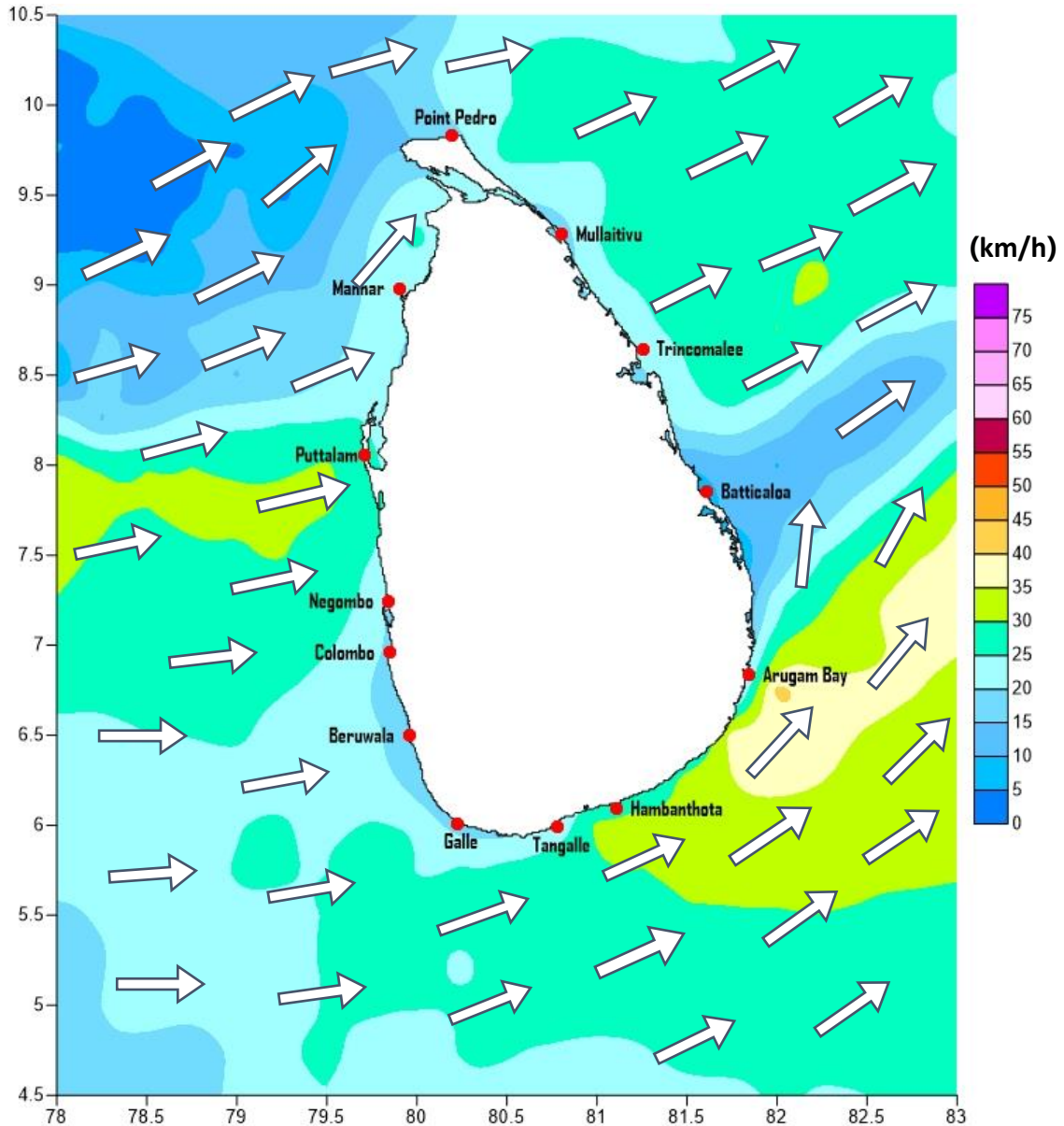


Weather Forecast For Fishery and Naval Community

Marine weather forecast for sea areas around the island

Issued at 04.00 p.m. on 18 August 2019

Marine weather forecast for 05.30 a.m. to 05.30 p.m. on 19/08/2019



Marine Division
Department of Meteorology
Colombo 07, Sri Lanka
+94 112686686

For Safer Shipping



Weather Forecast For Fishery and Naval Community

Sea Area	Wind Speed	Wave Height	Sea Condition	Weather
Puttalam to Mannar	30-40 kmph; 50-55 kmph at times.	1.25-2.5 m; 3.5-4.0 m at times.	Moderate; Rough at times.	Showers or thundershowers are likely at several places in the afternoon.
Mannar to Kankasanthurai	30-40 kmph; 50-55 kmph at times.	1.25-2.5 m; 3.5-4.0 m at times.	Moderate; Rough at times.	Showers or thundershowers are likely in deep sea.
Kankasanthurai to Trincomalee	30-40 kmph; 50-55 kmph at times.	1.25-2.5 m; 3.5-4.0 m at times.	Moderate; Rough at times.	Showers or thundershowers are likely in deep sea.
Trincomalee to Batticaloa	30-40 kmph; 50 kmph at times.	1.25-2.5 m; 3.5m at times.	Moderate; Fairly rough at times.	Showers or thundershowers are likely at several places in the afternoon.
Batticaloa to Pottuvil	30-40 kmph.	1.25-2.5 m.	Moderate.	Showers or thundershowers are likely at several places in the afternoon.
Pottuvil to Hambantota	30-40 kmph; 50-60 kmph at times.	1.25-2.5 m; 3.5-4.0 m at times.	Moderate; Rough at times.	Showers or thundershowers are likely at several places in the afternoon.
Hambantota to Matara	30-40 kmph; 50-60 kmph at times.	1.25-2.5 m; 3.5-4.0 m at times.	Moderate; Rough at times.	Showers or thundershowers are likely at few places.
Matara to Colombo	30-40 kmph; 50 kmph at times.	1.25-2.5 m; 3.5m at times.	Moderate; Fairly rough at times.	Showers or thundershowers at several places
Colombo to Puttalam	30-40 kmph; 50-55 kmph at times.	1.25-2.5 m; 3.5-4.0 m at times.	Moderate; Rough at times.	Showers or thundershowers are likely at several places in the afternoon.

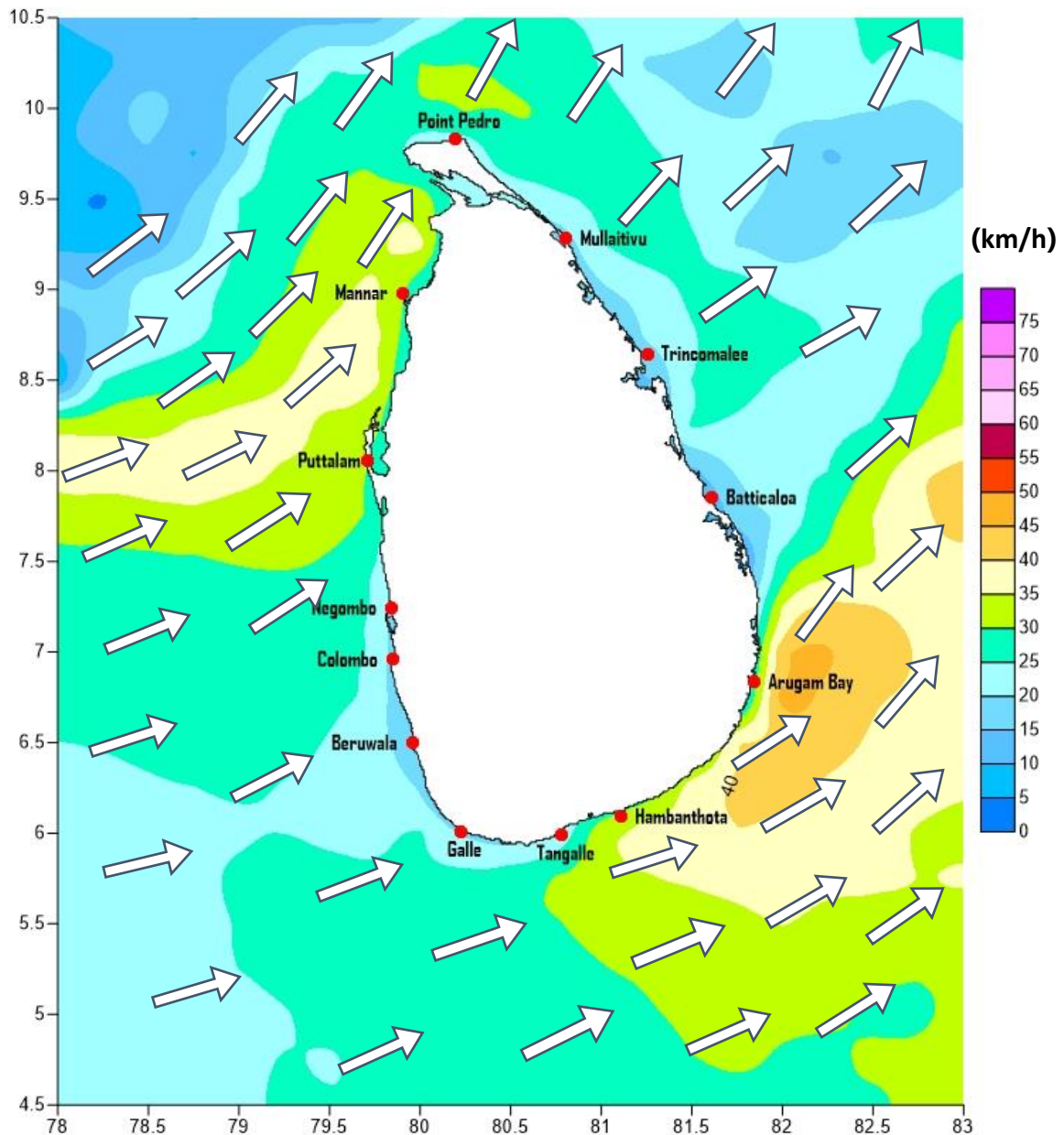
Marine Division
Department of Meteorology
Colombo 07, Sri Lanka
+94 112686686

For Safer Shipping



Weather Forecast For Fishery and Naval Community

Marine weather forecast for 05.30 p.m. on 19/08/2019 to 05.30 a.m. to 20/08/2019



Marine Division
Department of Meteorology
Colombo 07, Sri Lanka
+94 112686686

For Safer Shipping



Weather Forecast For Fishery and Naval Community

Sea Area	Wind Speed	Wave Height	Sea Condition	Weather
Puttalam to Mannar	30-40 kmph; 50-55 kmph at times.	1.25-2.5 m; 3.5-4.0 m at times.	Moderate; Rough at times.	Showers or thundershowers at several places in the evening or night.
Mannar to Kankasanthurai	30-40 kmph; 50-55 kmph at times.	1.25-2.5 m; 3.5-4.0 m at times.	Moderate; Rough at times.	Showers or thundershowers are likely in deep sea.
Kankasanthurai to Trincomalee	30-40 kmph; 50 kmph at times.	1.25-2.5 m; 3.5m at times.	Moderate; Fairly rough at times.	Showers or thundershowers are likely in deep sea.
Trincomalee to Batticaloa	30-40 kmph; 50 kmph at times.	1.25-2.5 m; 3.5m at times.	Moderate; Fairly rough at times.	Showers or thundershowers at several places in the evening or night.
Batticaloa to Pottuvil	30-40 kmph.	1.25-2.5 m.	Moderate.	Showers or thundershowers at several places in the evening or night.
Pottuvil to Hambantota	30-40 kmph; 50-60 kmph at times.	1.25-2.5 m; 3.5-4.0 m at times.	Moderate; Rough at times.	Showers or thundershowers at several places in the evening or night.
Hambantota to Matara	30-40 kmph; 50-60 kmph at times.	1.25-2.5 m; 3.5-4.0 m at times.	Moderate; Rough at times.	Showers or thundershowers at several places in the evening or night.
Matara to Colombo	30-40 kmph; 50 kmph at times.	1.25-2.5 m; 3.5m at times.	Moderate; Fairly rough at times.	Showers or thundershowers at several places.
Colombo to Puttalam	30-40 kmph; 50-55 kmph at times.	1.25-2.5 m; 3.5-4.0 m at times.	Moderate; Rough at times.	Showers or thundershowers at several places in the evening or night.

**** Temporarily strong gusty winds and rough seas can be expected during thundershowers.**

Marine Division
Department of Meteorology
Colombo 07, Sri Lanka
+94 112686686

For Safer Shipping

