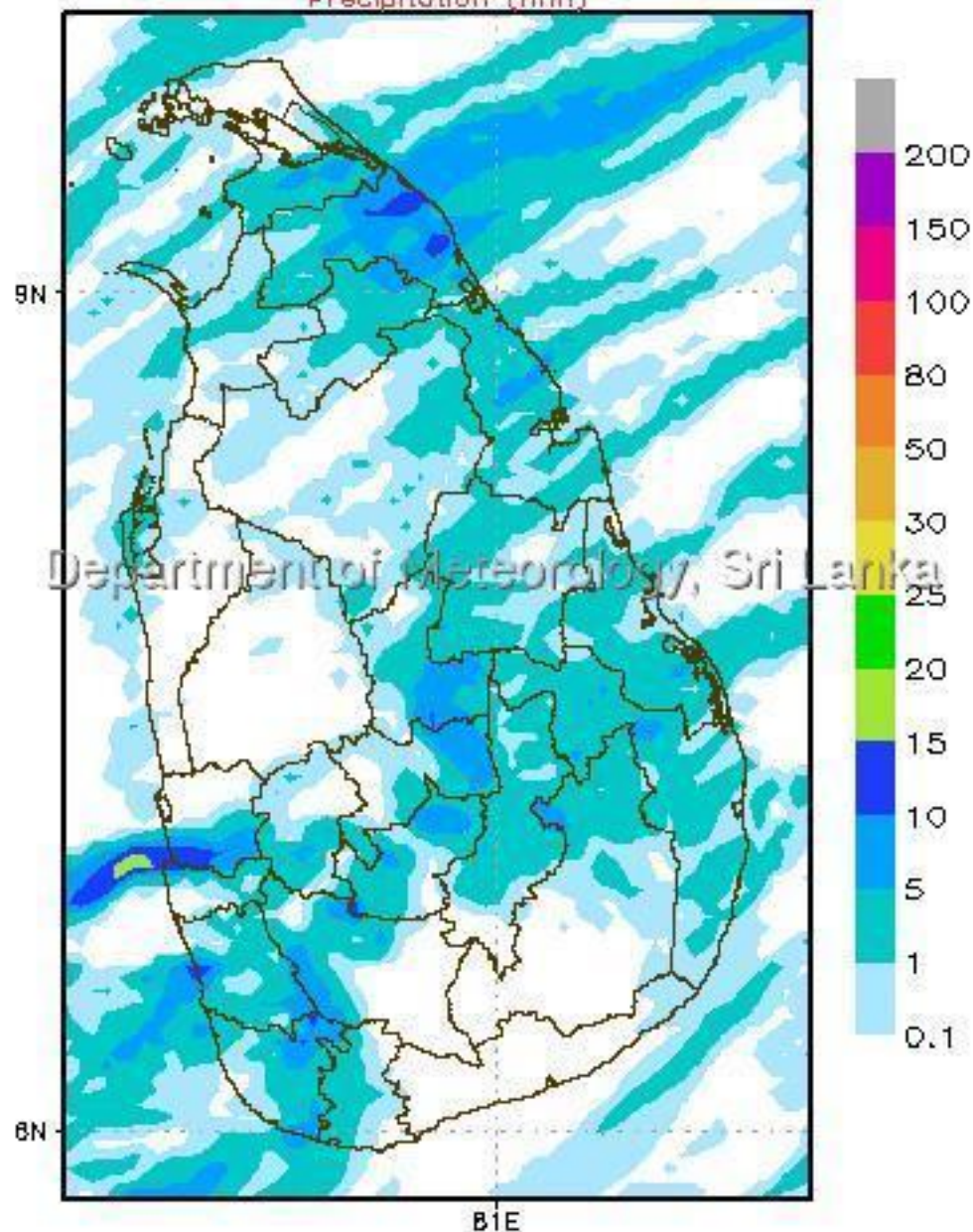
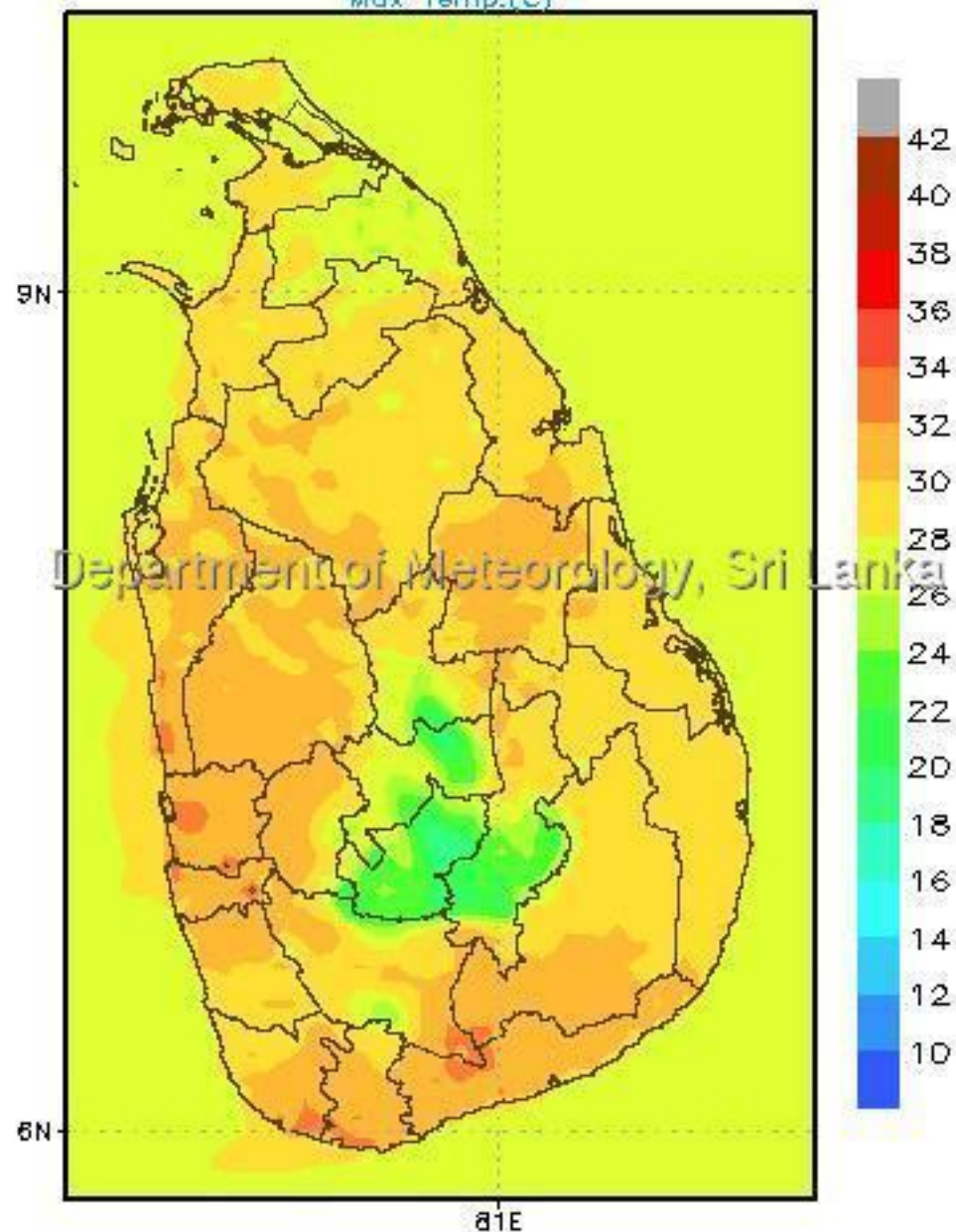


WRFDA(05Km) Forecast (24Hr) valid for 03UTC of 16/02/2018

Precipitation (mm)

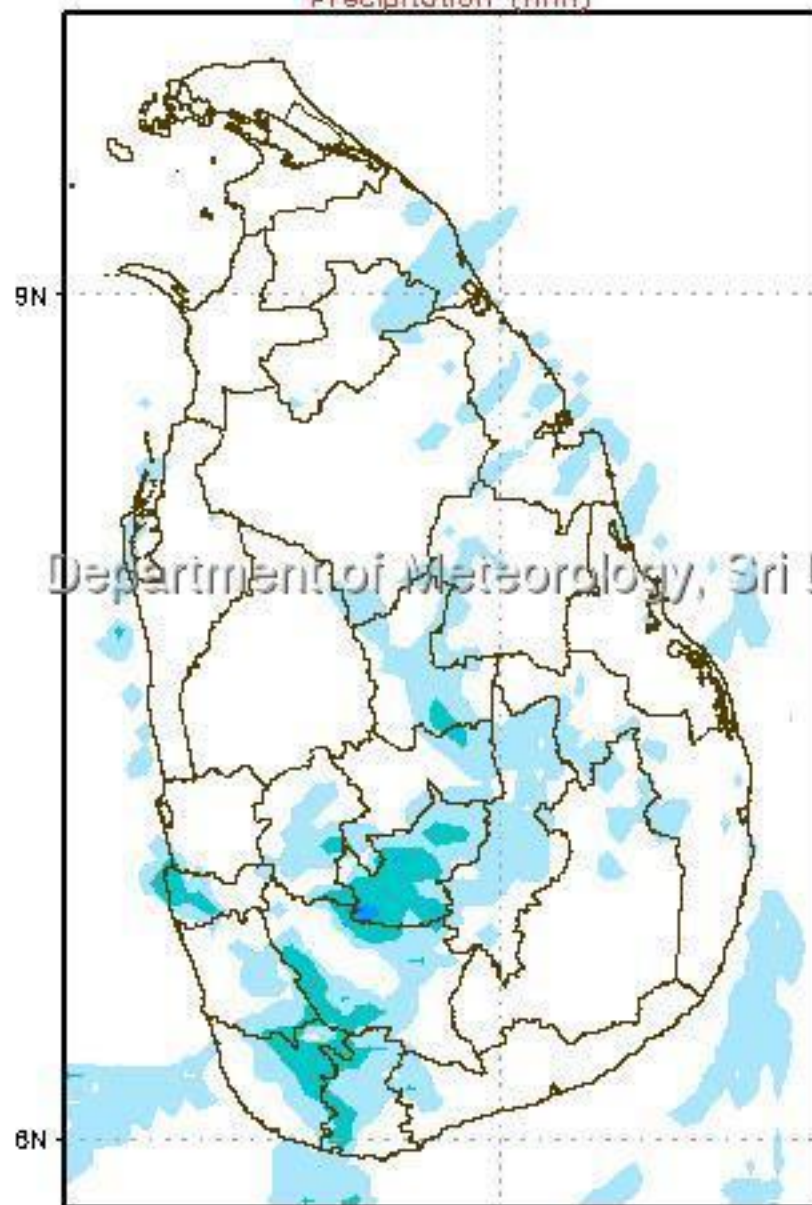


Max Temp.(C)

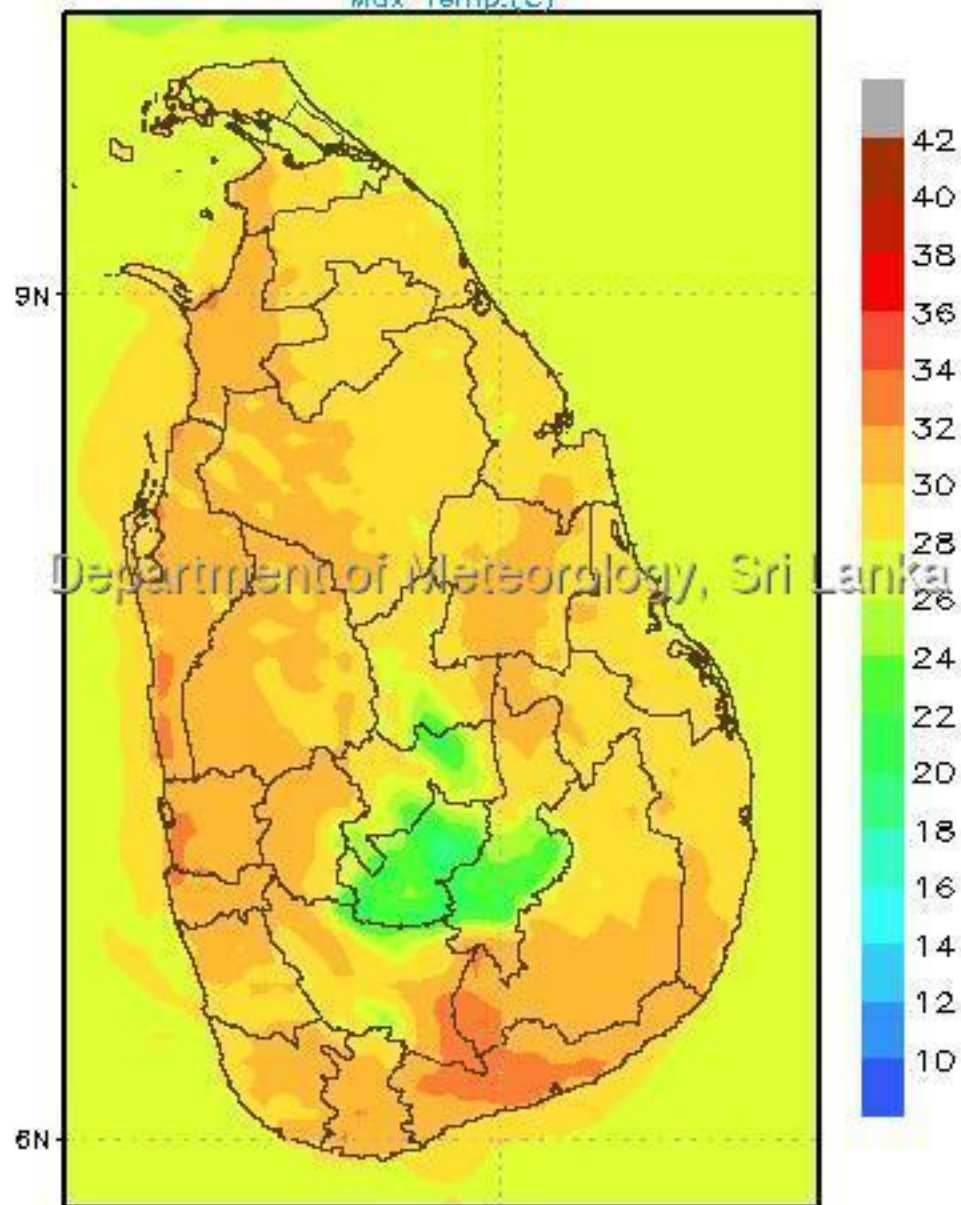


WRFDA(05Km) Forecast (24Hr) valid for 03UTC of 17/02/2018

Precipitation (mm)



Max Temp.(C)

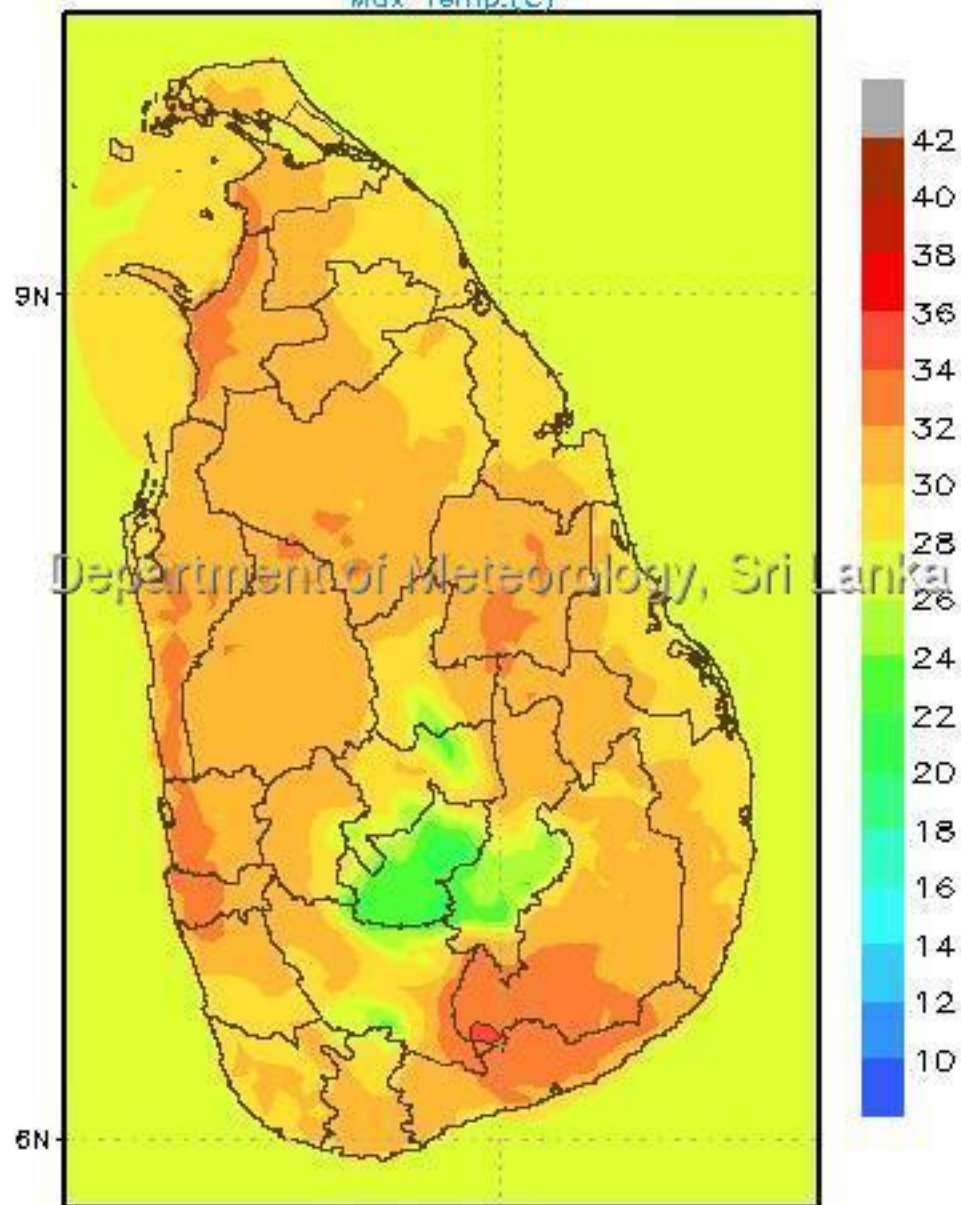


WRFDA(05Km) Forecast (24Hr) valid for 03UTC of 18/02/2018

Precipitation (mm)



Max Temp.(C)



Department of Meteorology, Sri Lanka

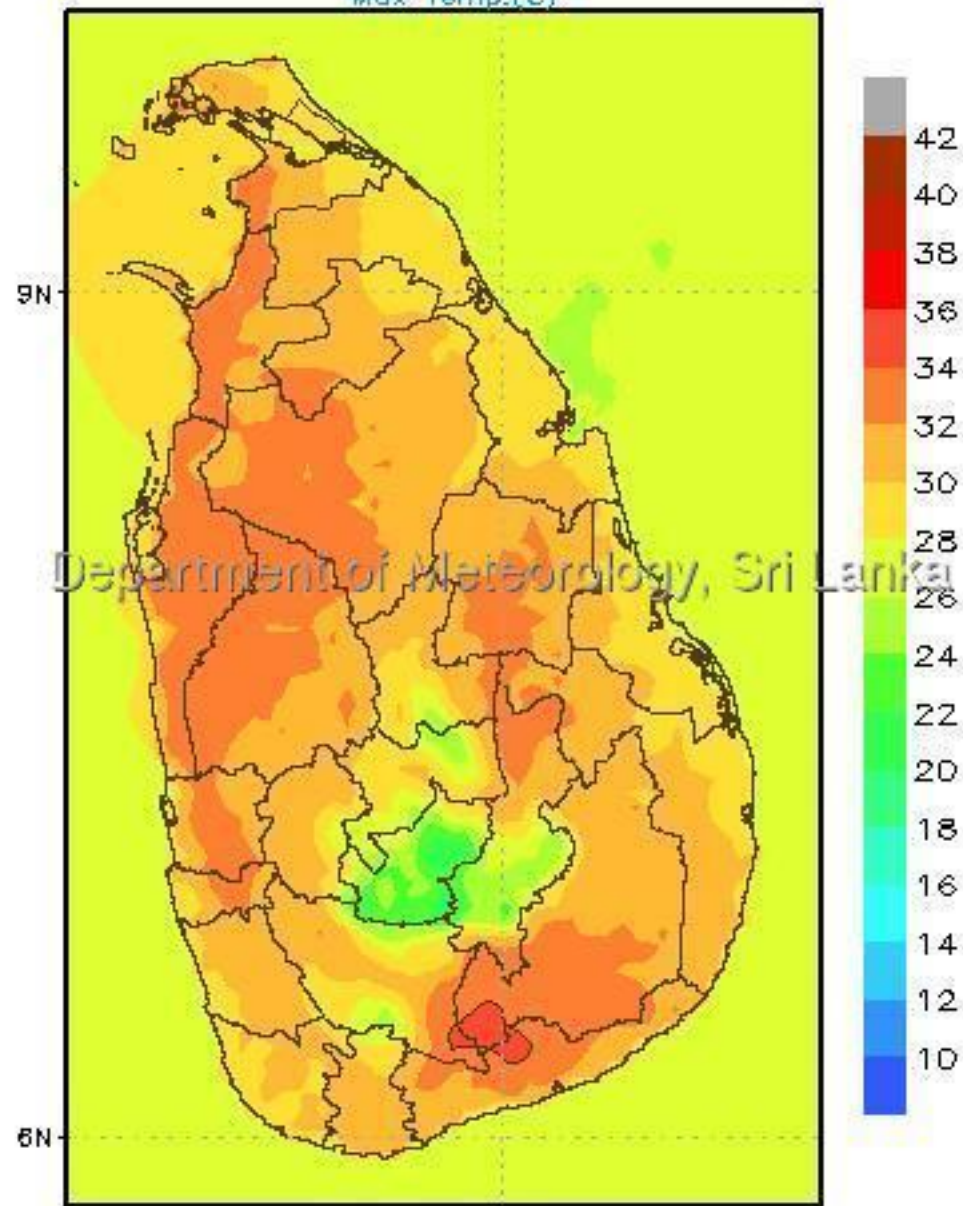
Department of Meteorology, Sri Lanka

WRFDA(05Km) Forecast (24Hr) valid for 03UTC of 19/02/2018

Precipitation (mm)

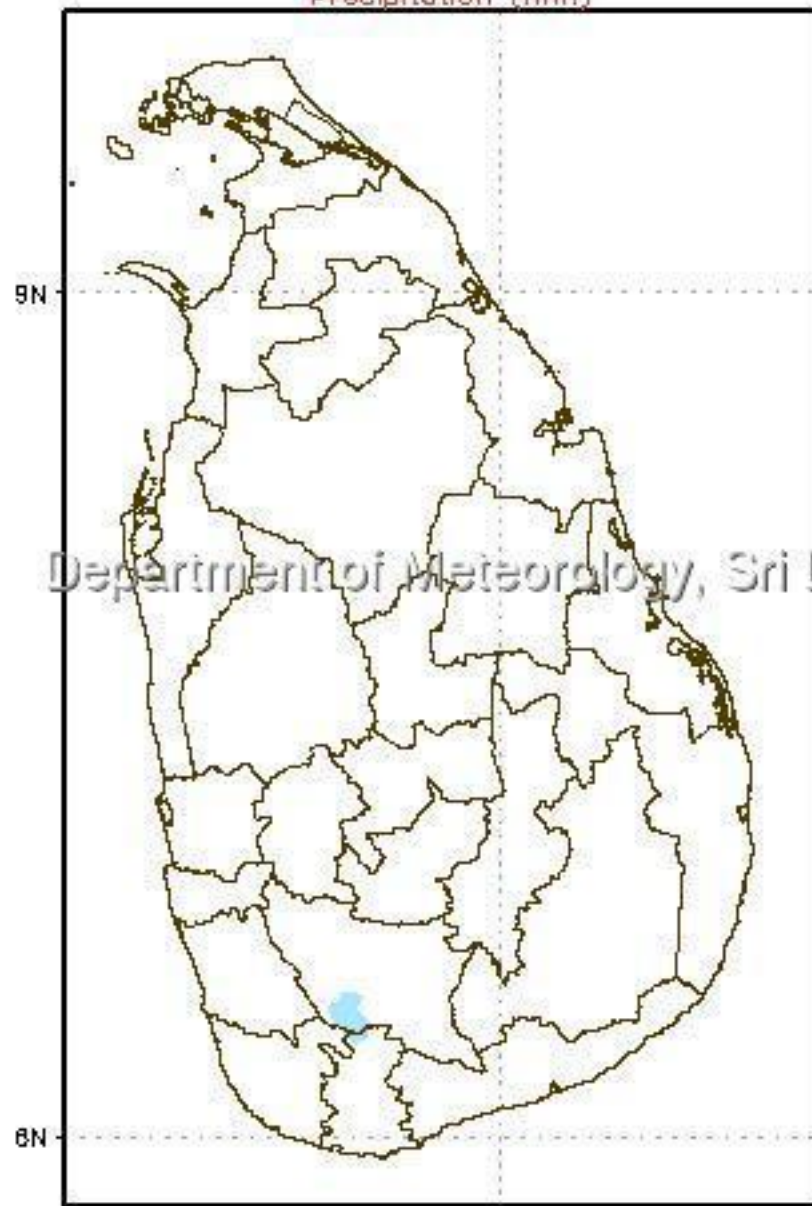


Max Temp.(C)

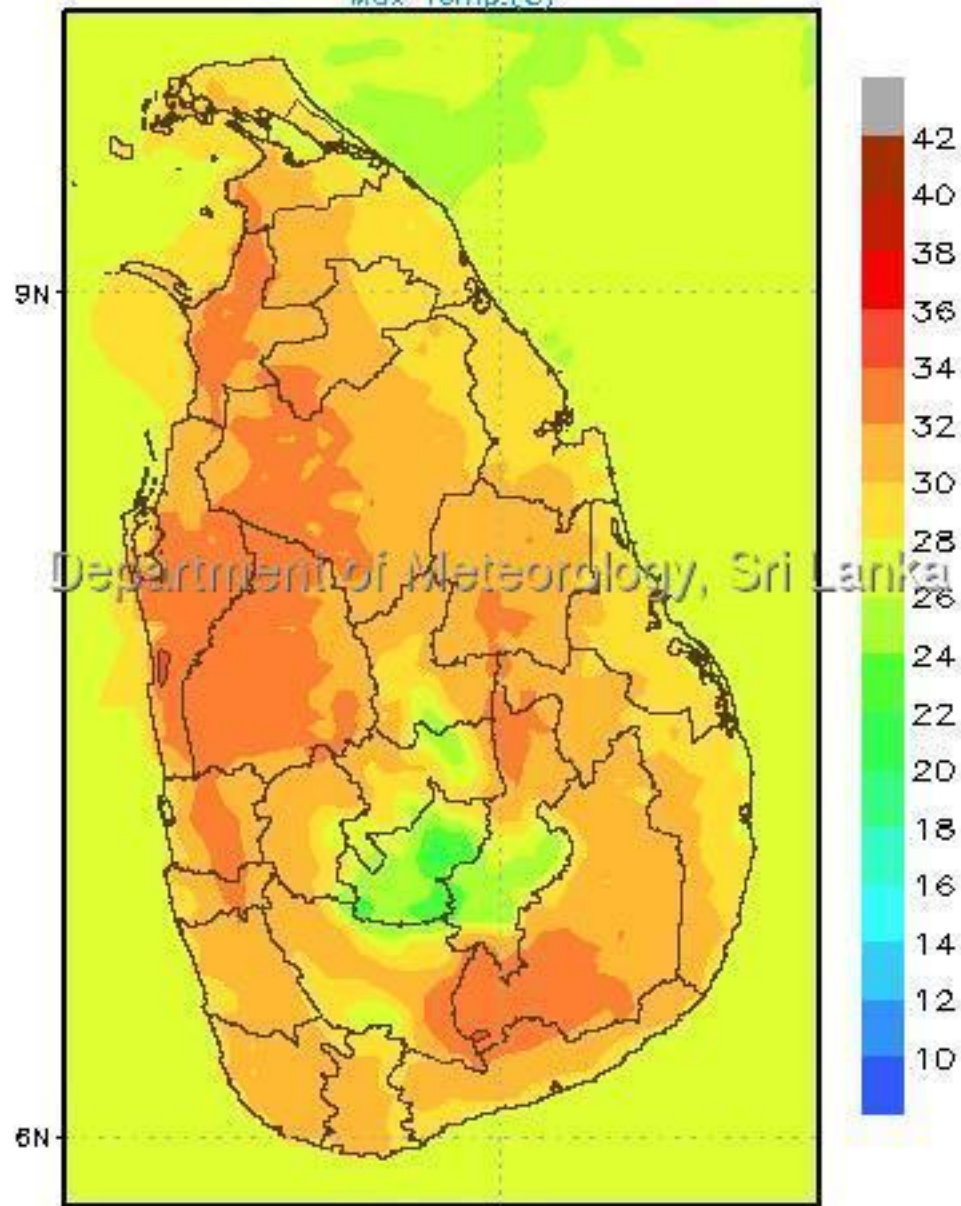


WRFDA(05Km) Forecast (24Hr) valid for 03UTC of 20/02/2018

Precipitation (mm)



Max Temp.(C)



Department of Meteorology, Sri Lanka

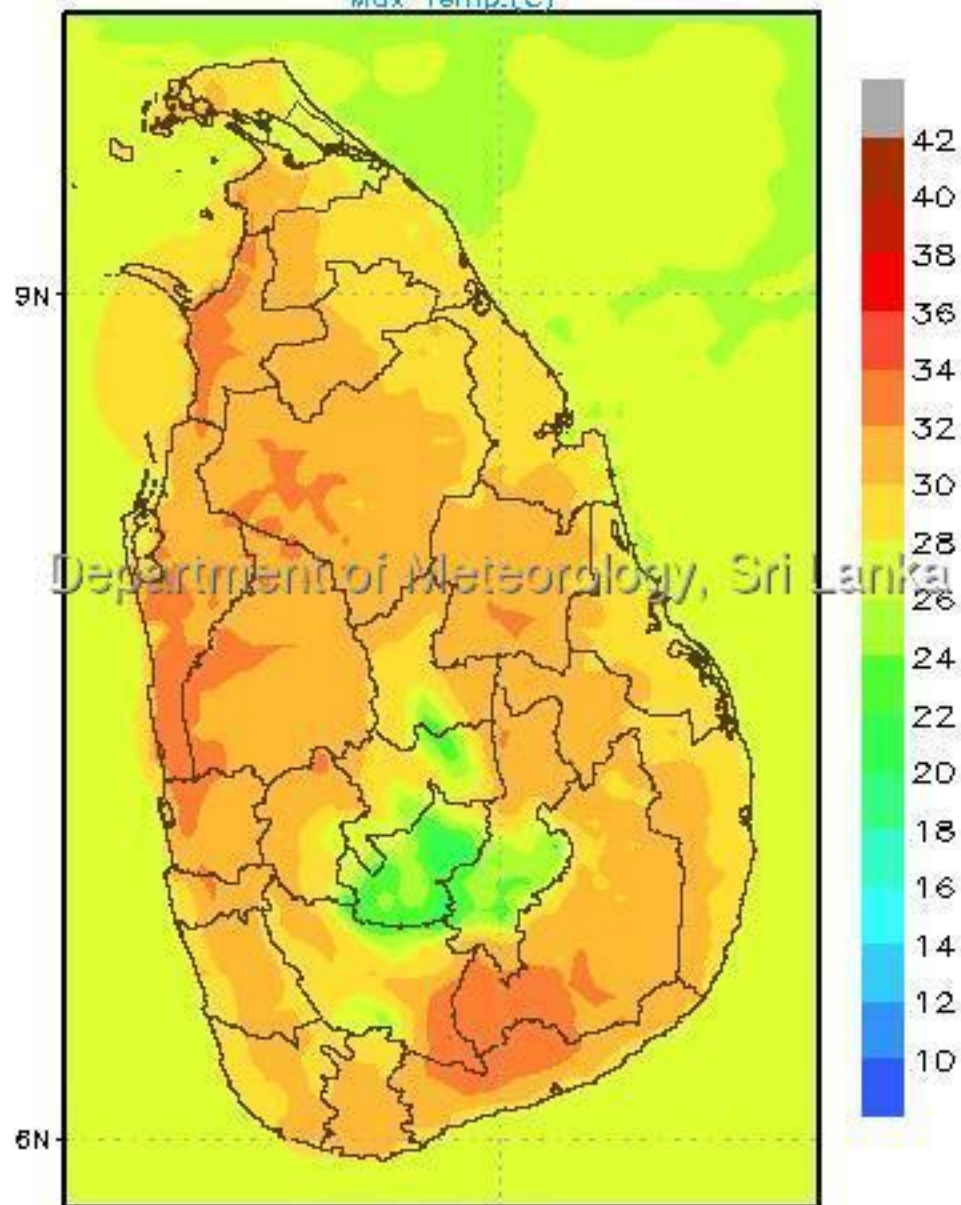
Department of Meteorology, Sri Lanka

WRFDA(05Km) Forecast (24Hr) valid for 03UTC of 21/02/2018

Precipitation (mm)



Max Temp.(C)

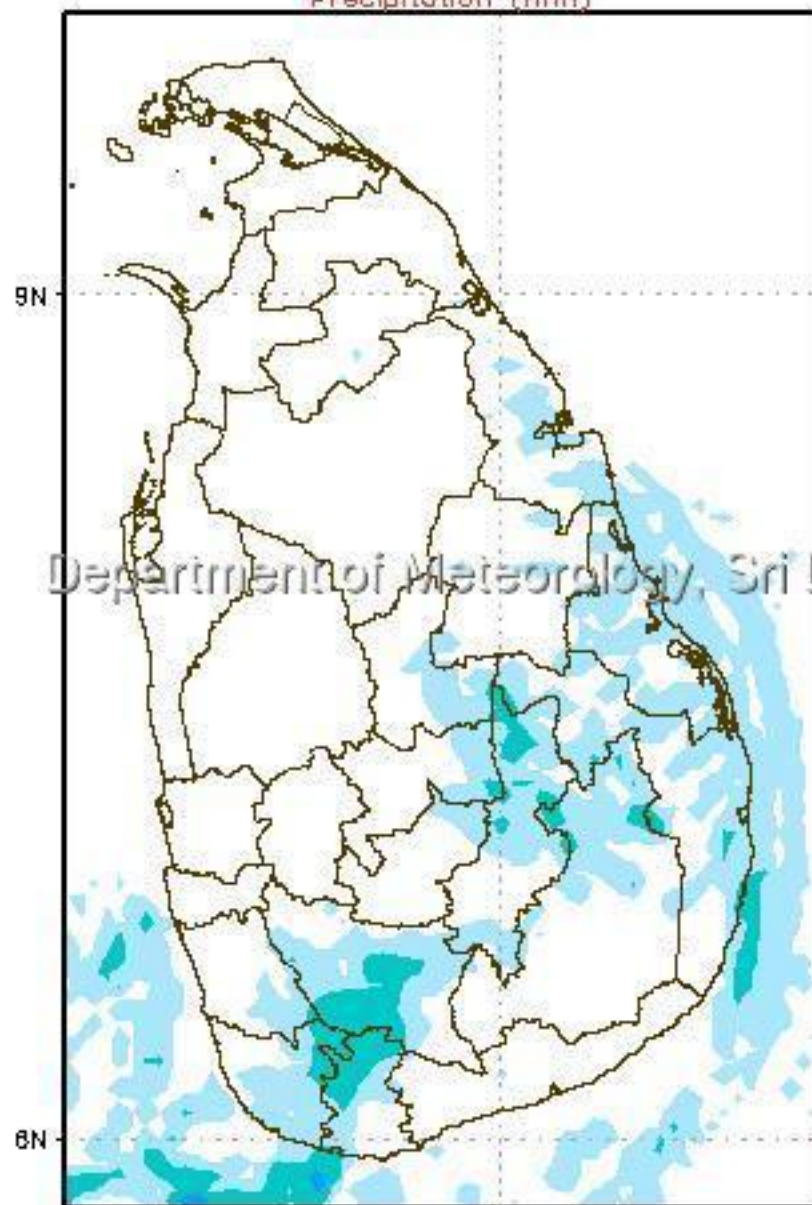


Department of Meteorology, Sri Lanka

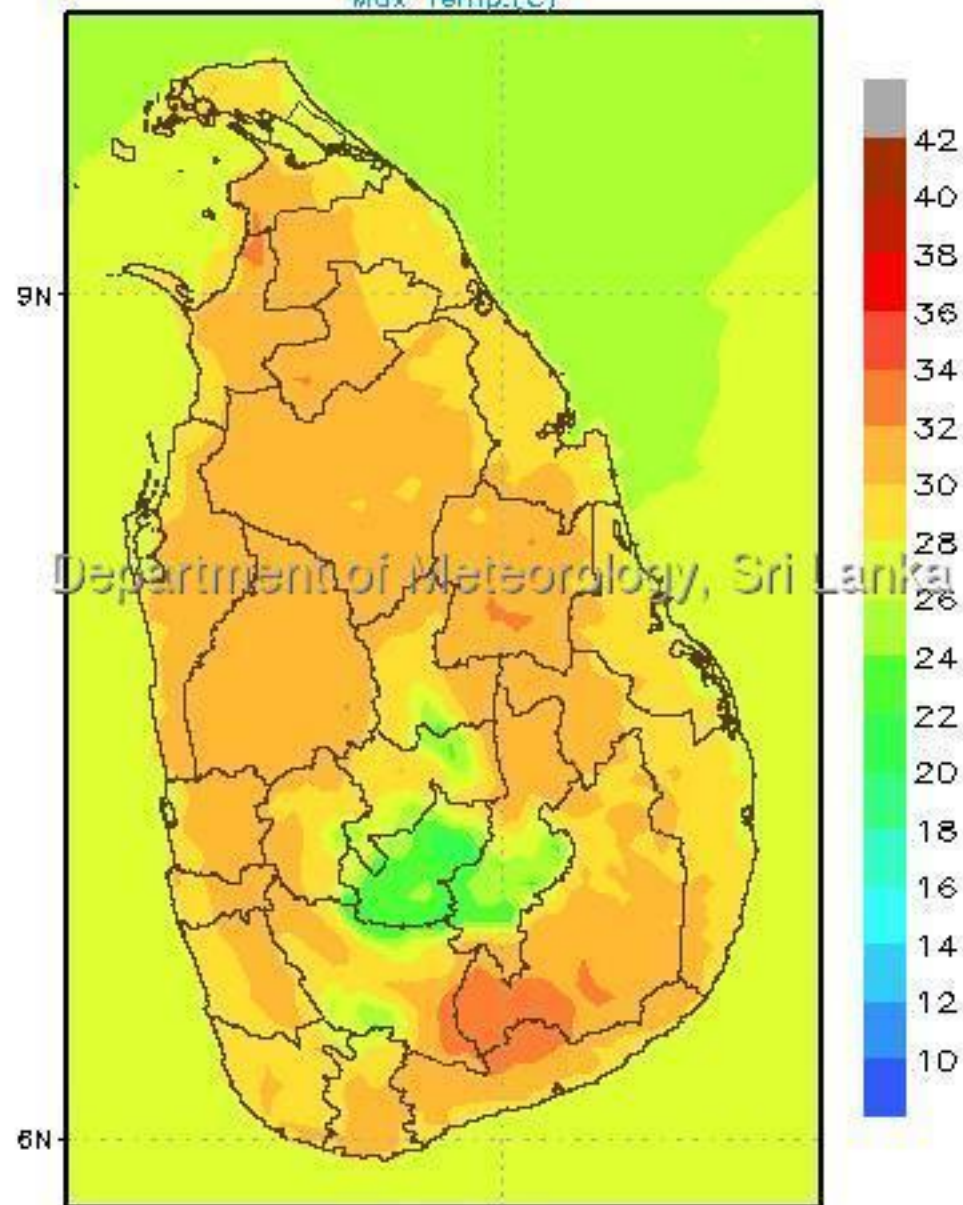
Department of Meteorology, Sri Lanka

WRFDA(05Km) Forecast (24Hr) valid for 03UTC of 22/02/2018

Precipitation (mm)



Max Temp.(C)

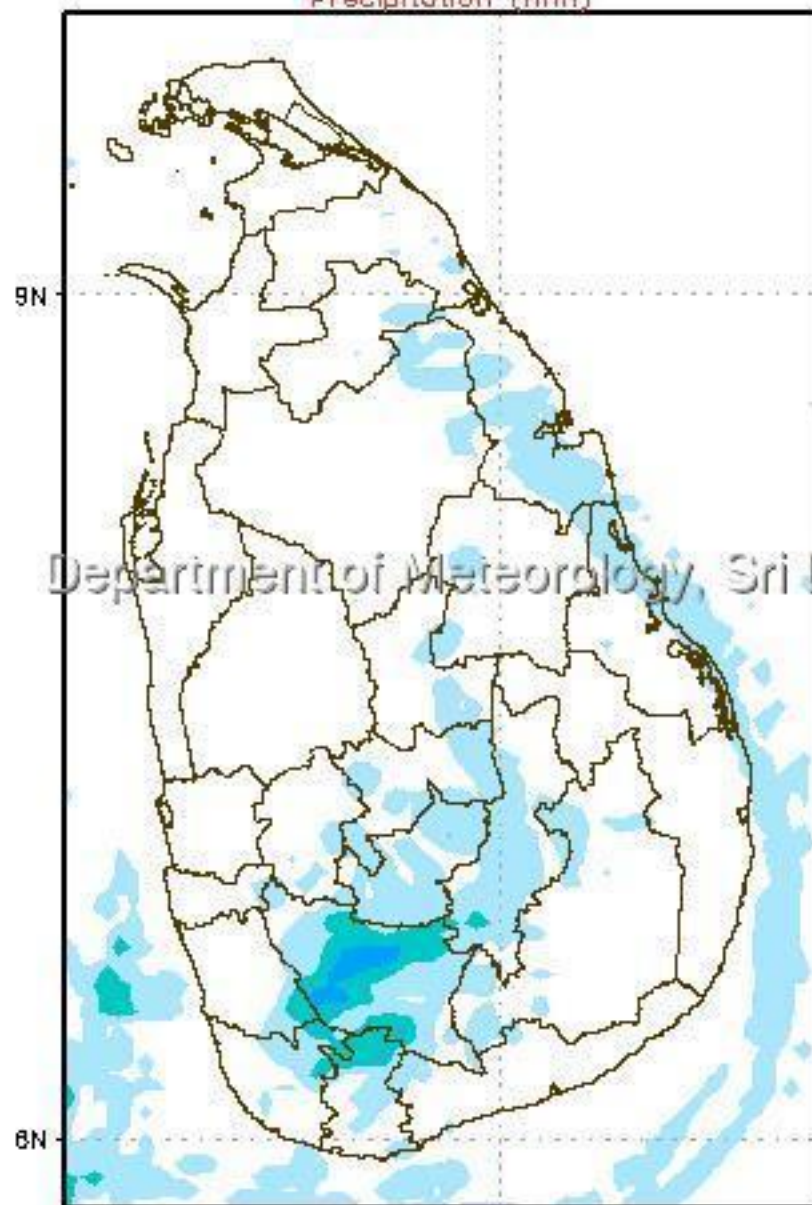


Department of Meteorology, Sri Lanka

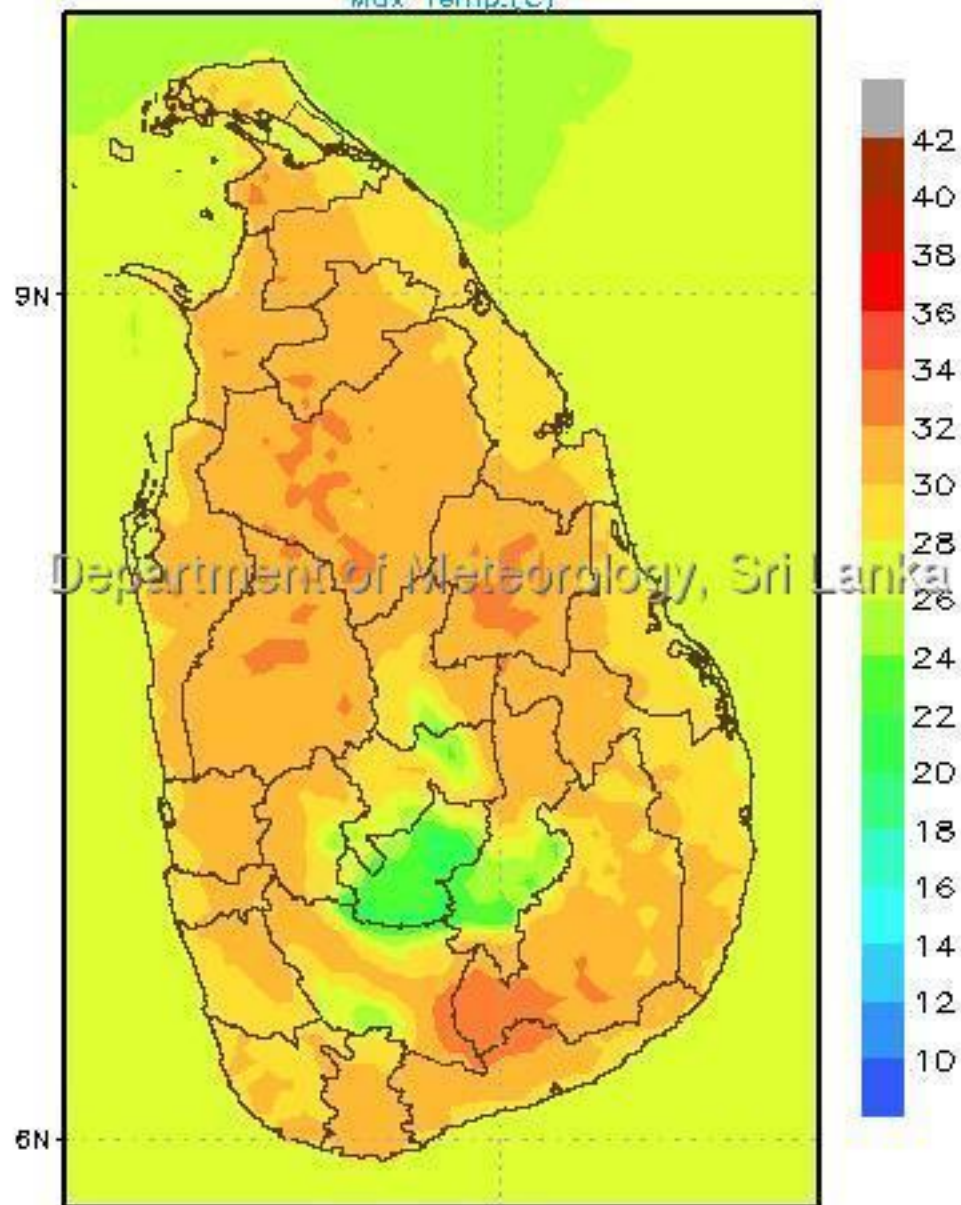
Department of Meteorology, Sri Lanka

WRFDA(05Km) Forecast (24Hr) valid for 03UTC of 23/02/2018

Precipitation (mm)



Max Temp.(C)



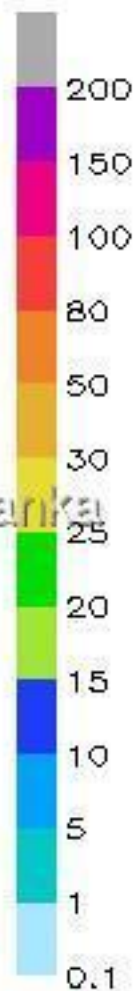
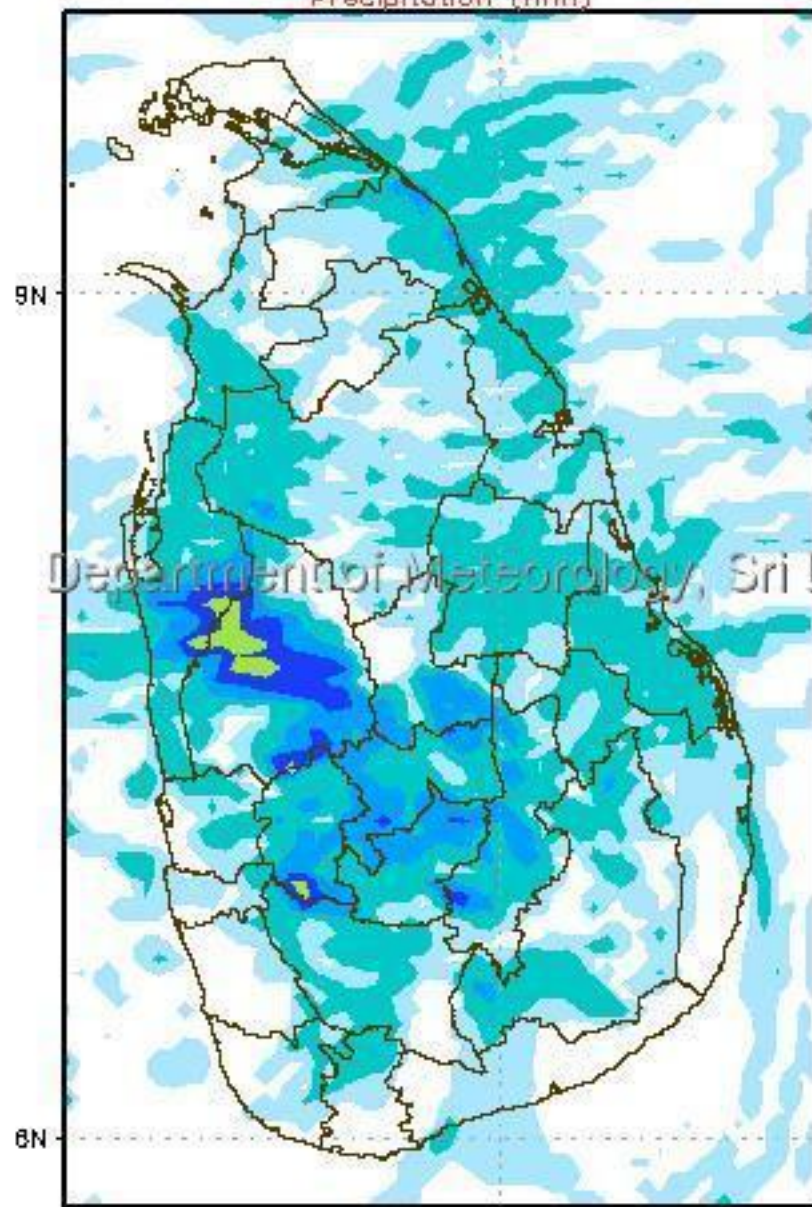
Department of Meteorology, Sri Lanka

Department of Meteorology, Sri Lanka

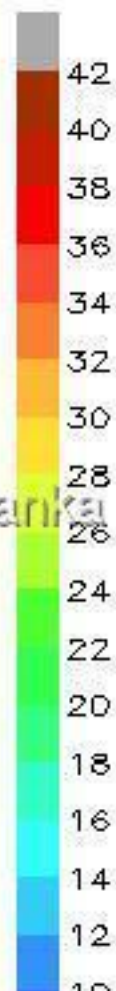
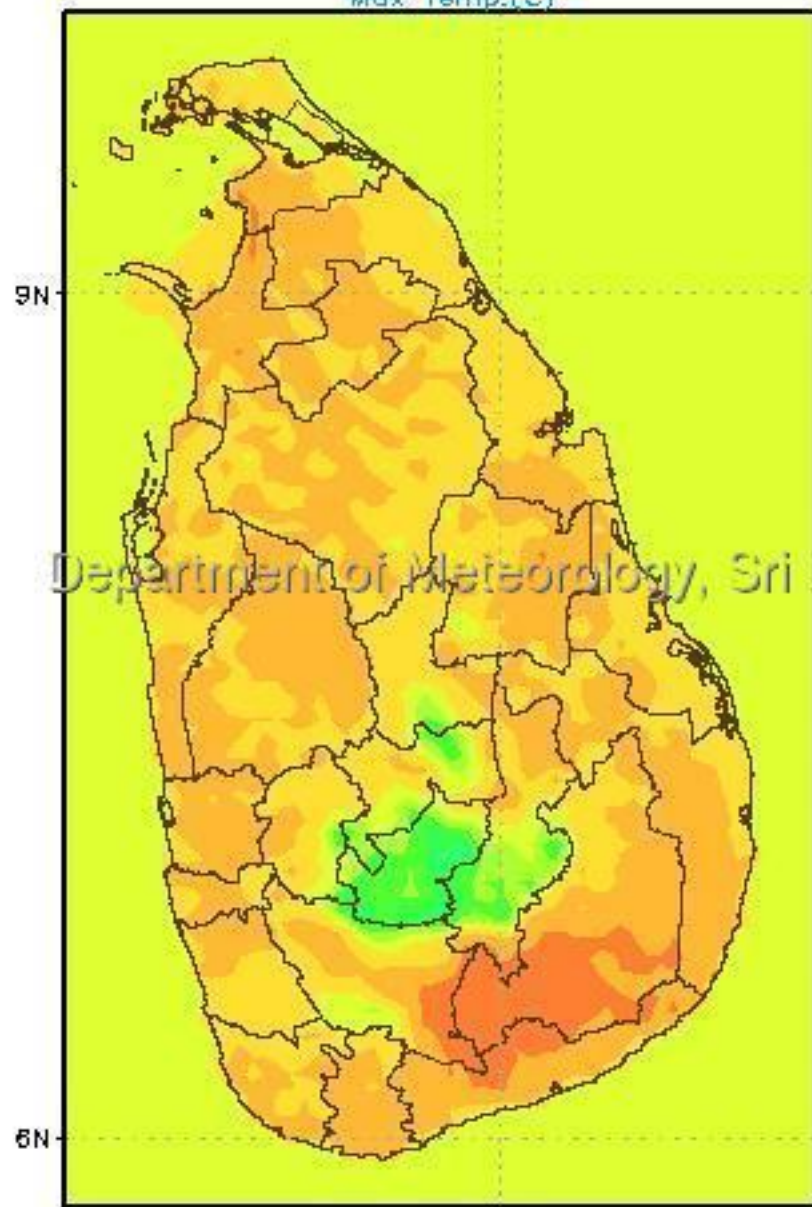


WRFDA(05Km) Forecast (24Hr) valid for 03UTC of 24/02/2018

Precipitation (mm)

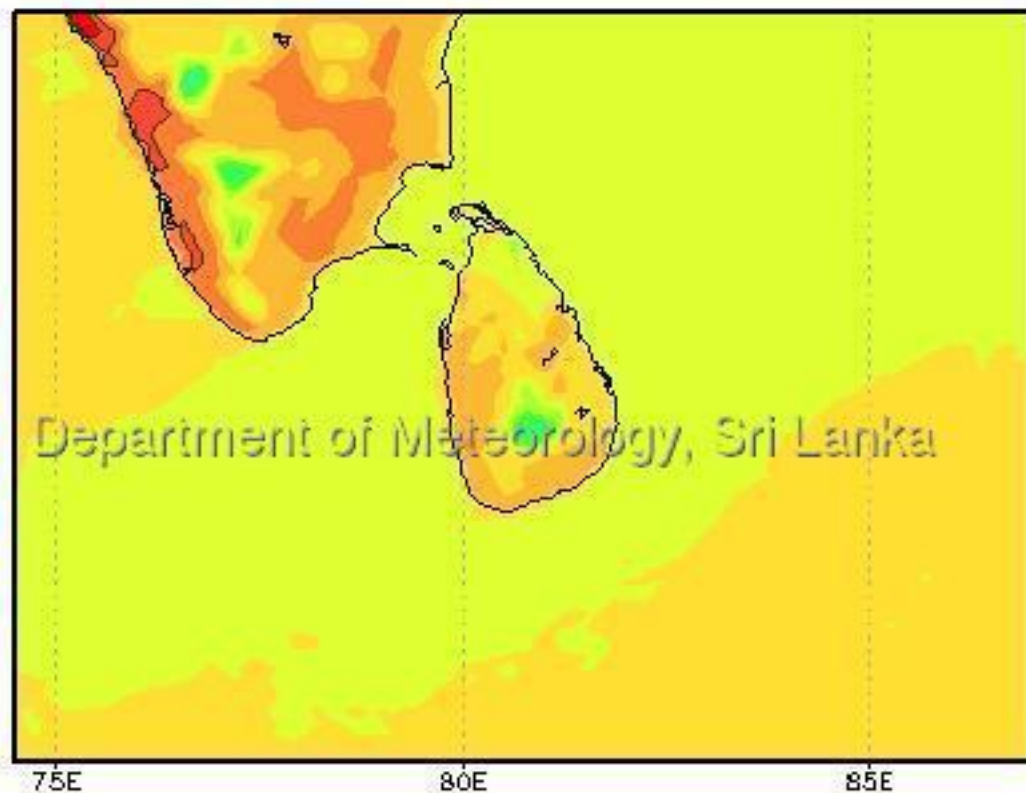
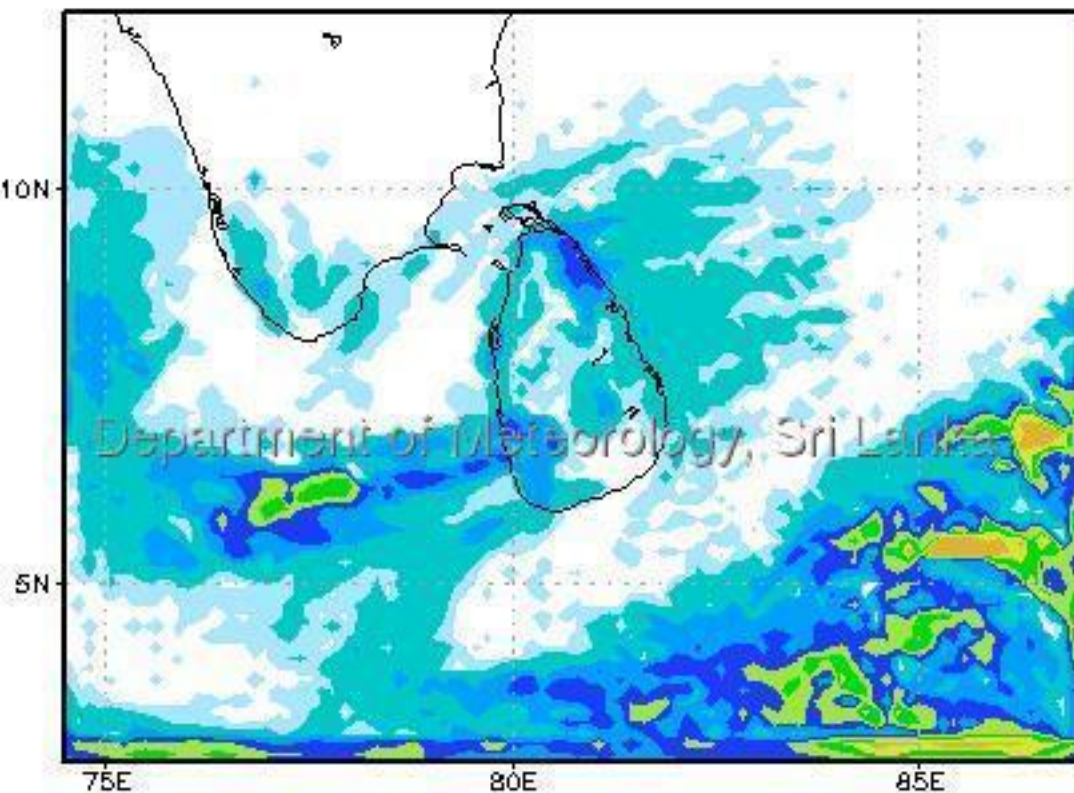


Max Temp.(C)



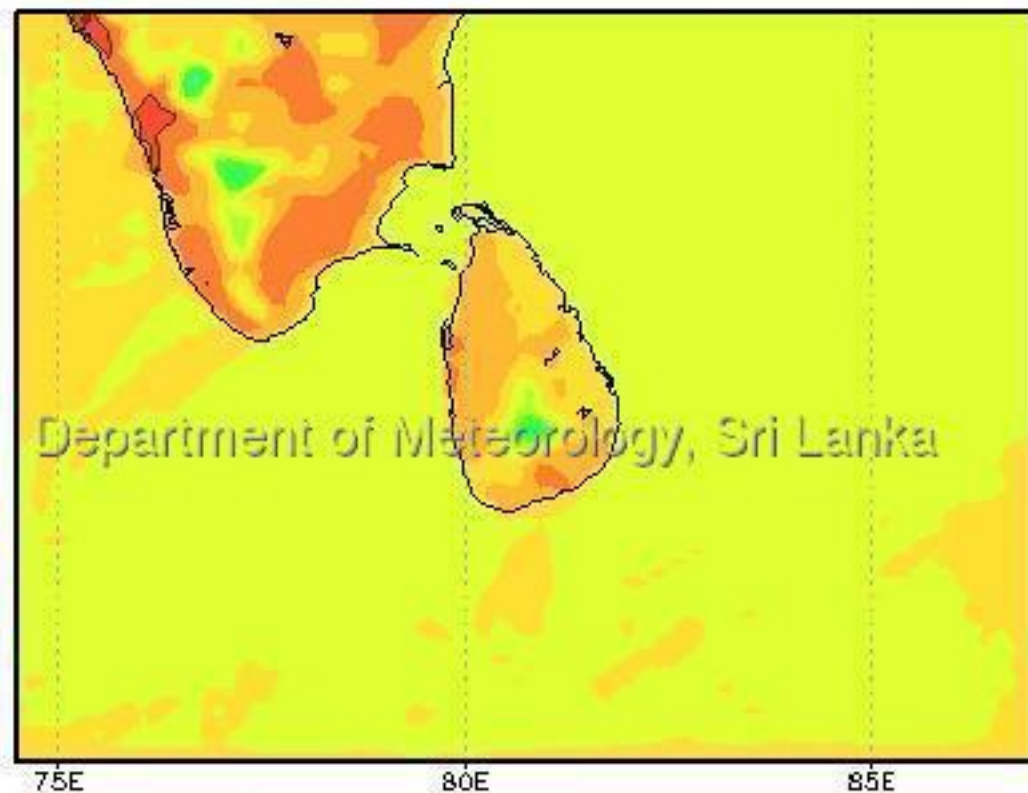
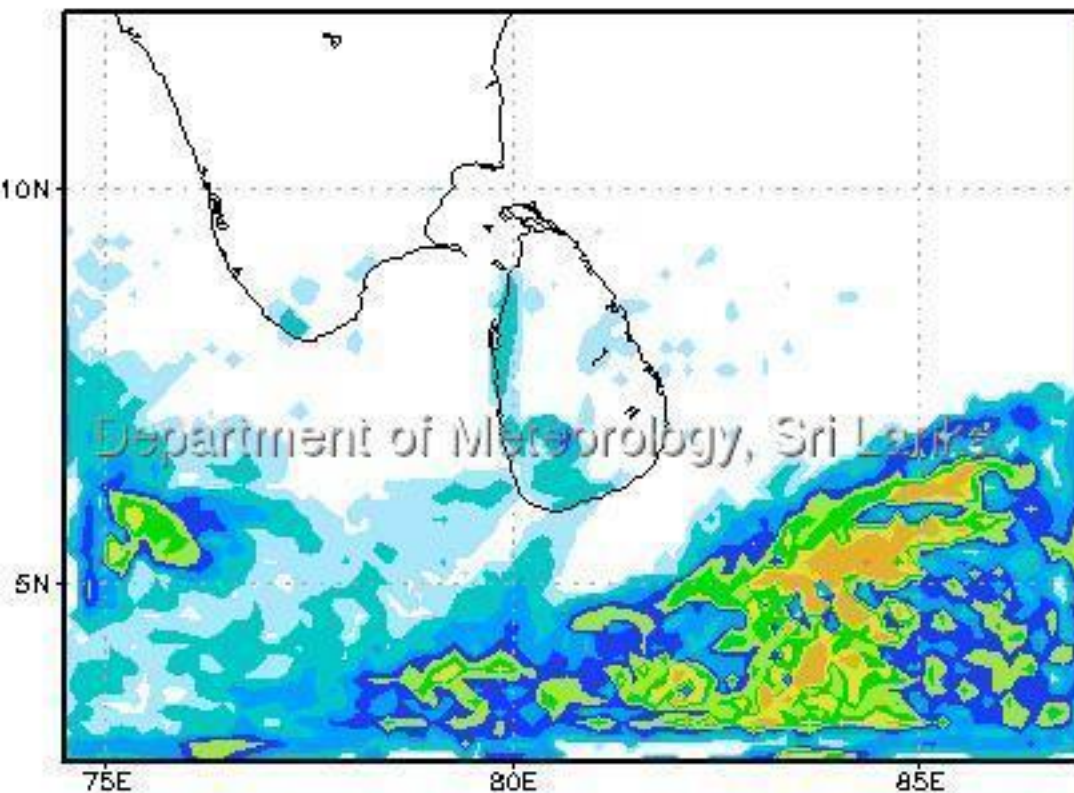
Precipitation (mm)

Max Temp.(°C)



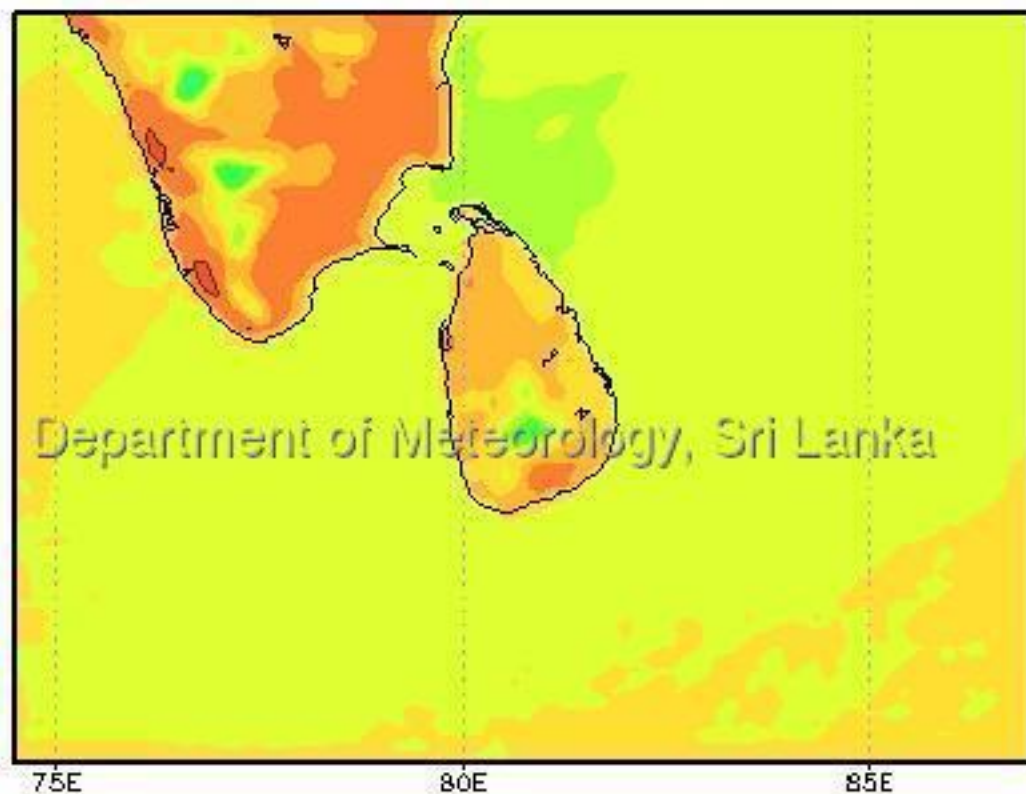
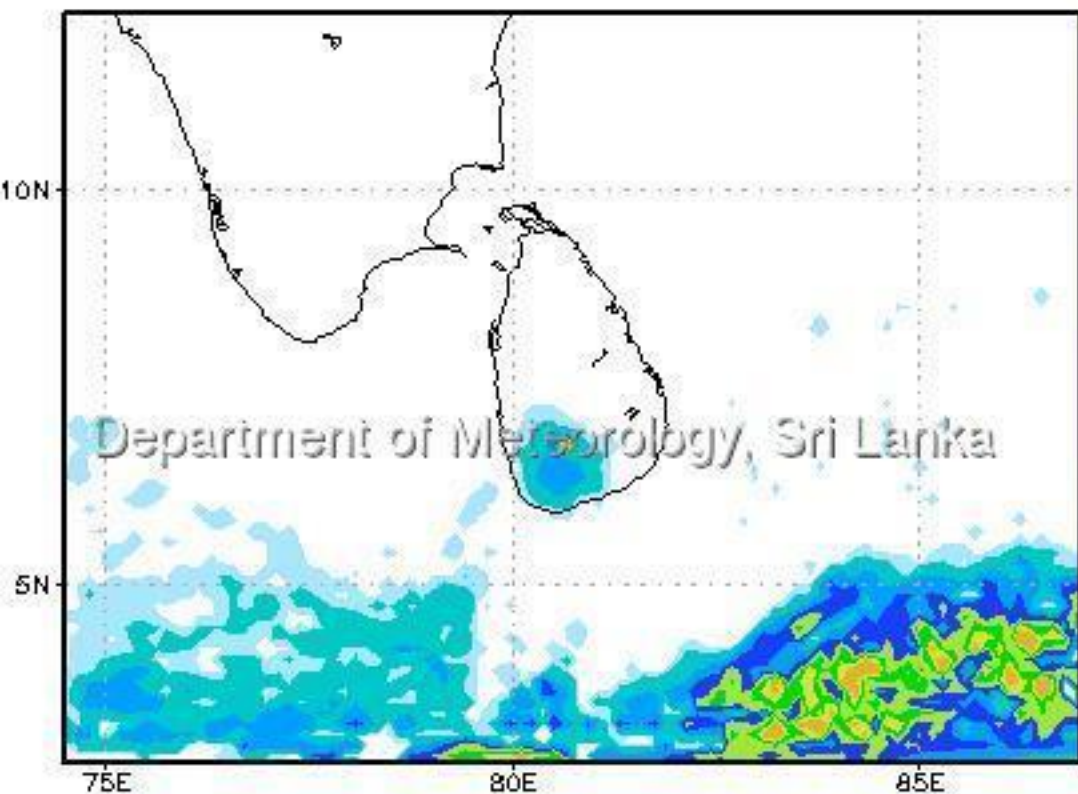
Precipitation (mm)

Max Temp.(°C)

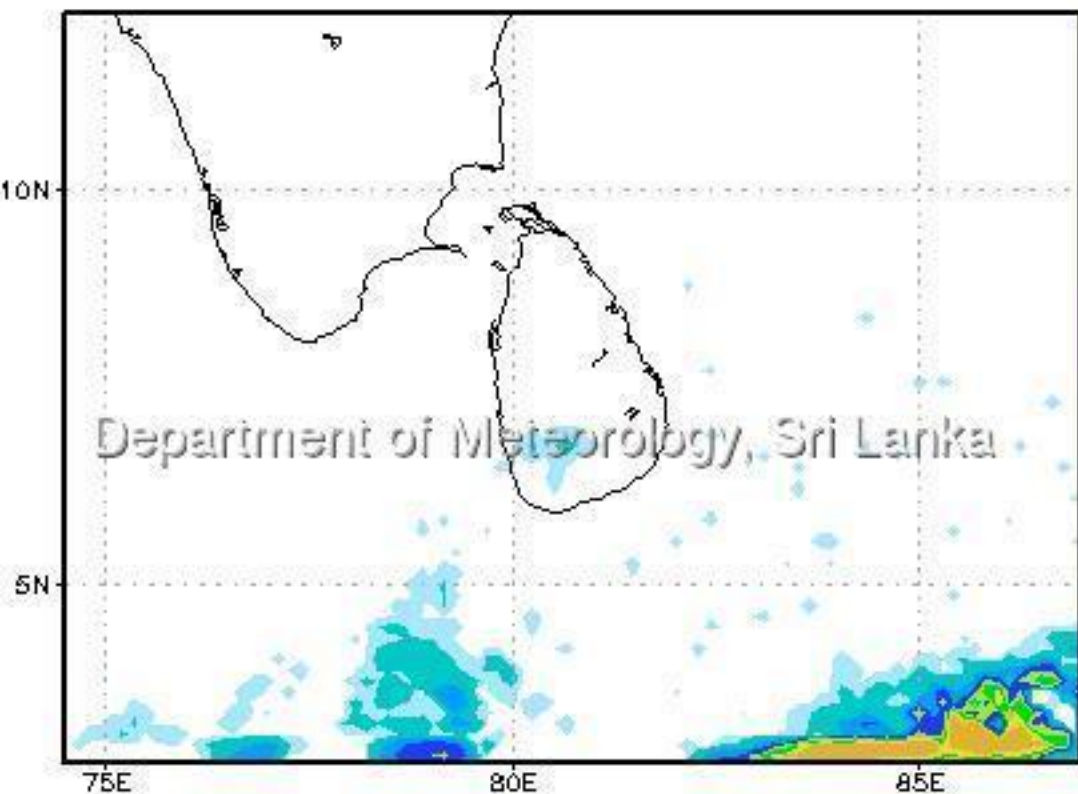


Precipitation (mm)

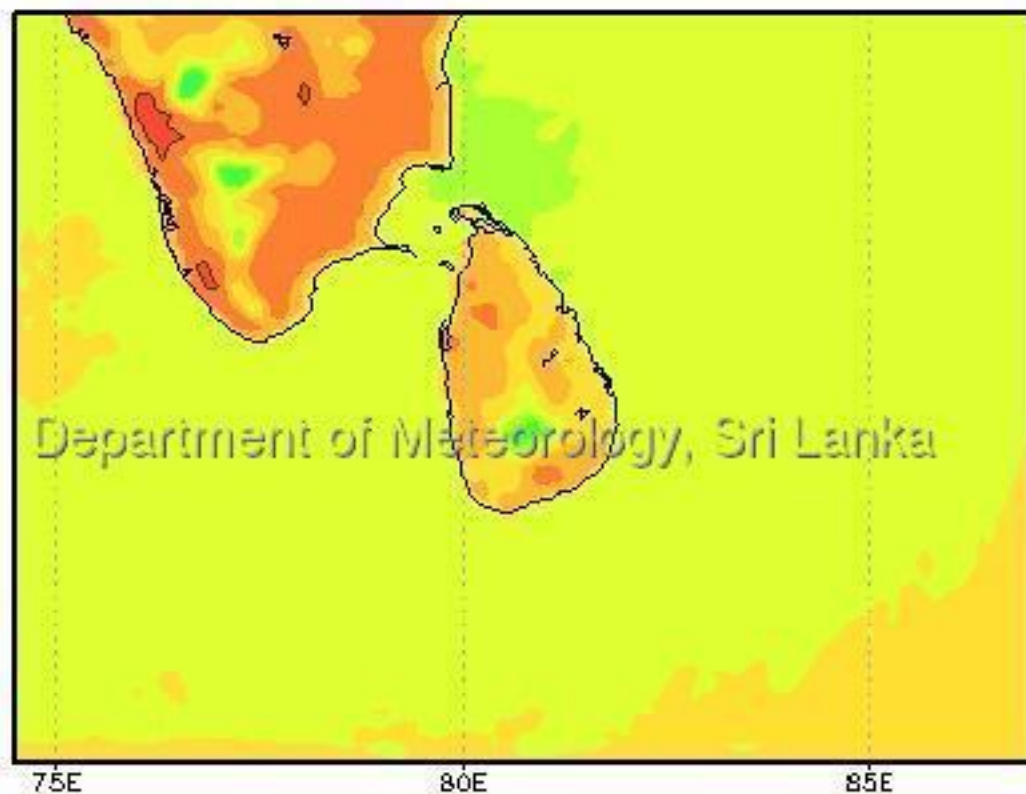
Max Temp.(°C)



Precipitation (mm)

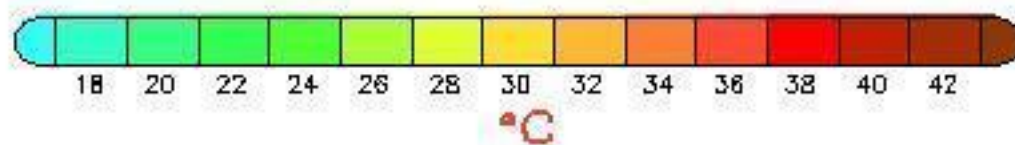
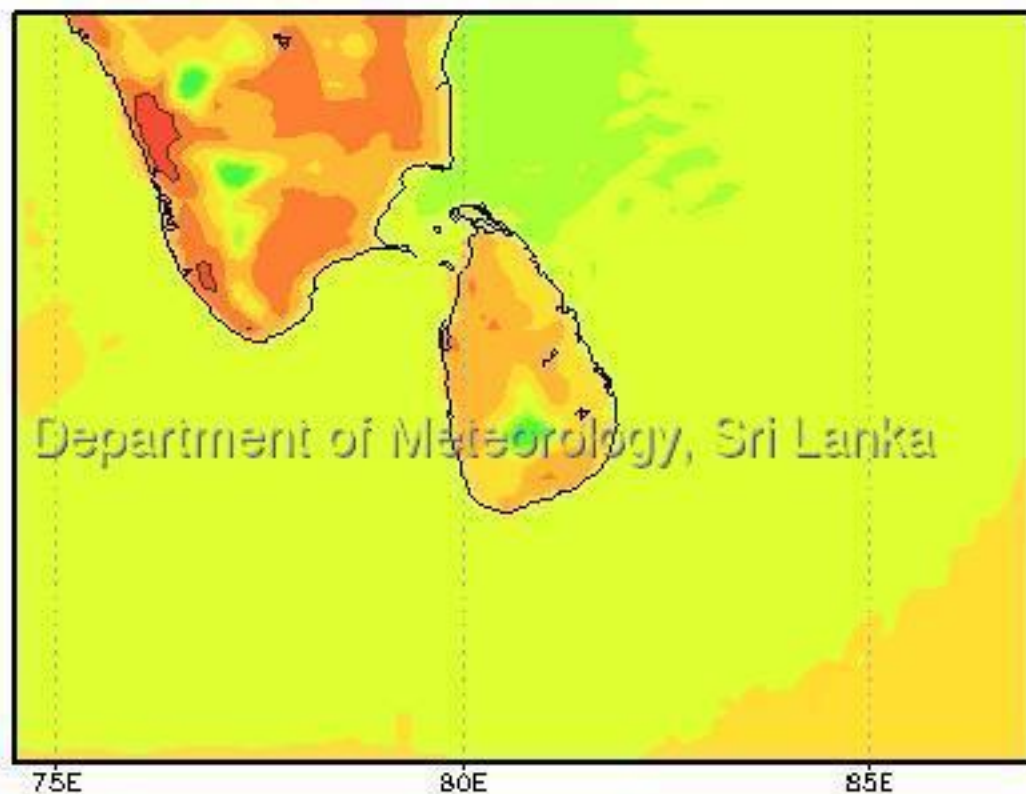
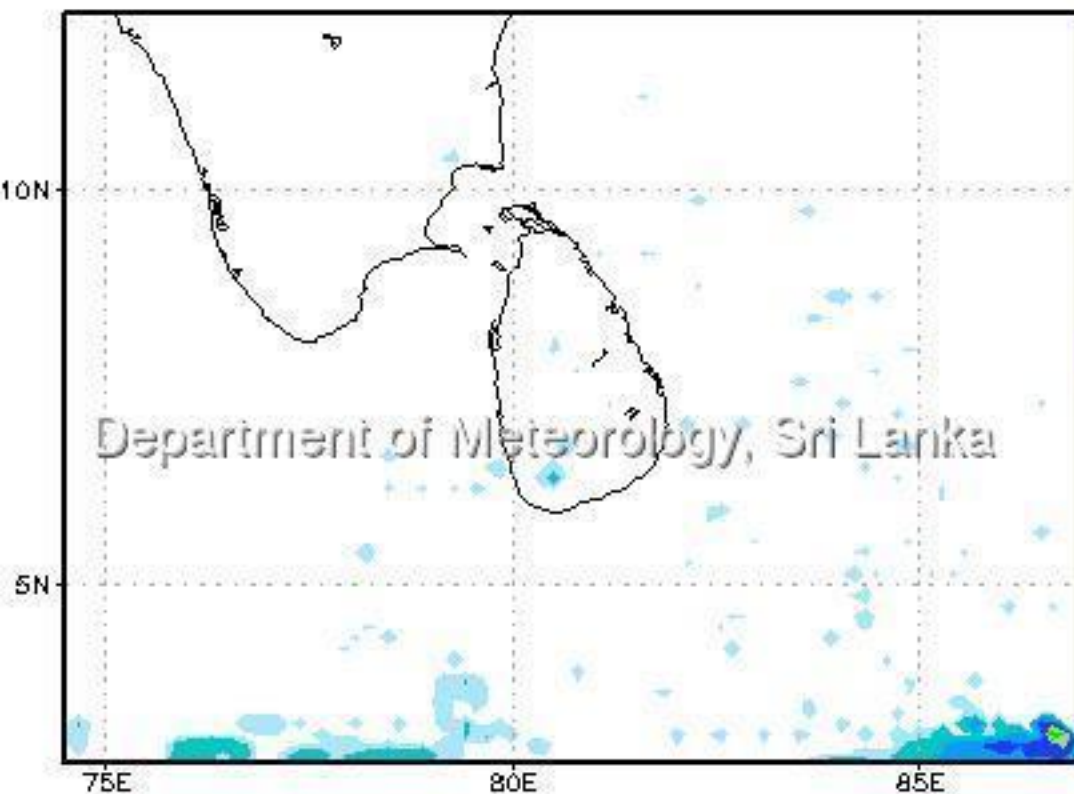


Max Temp.(°C)

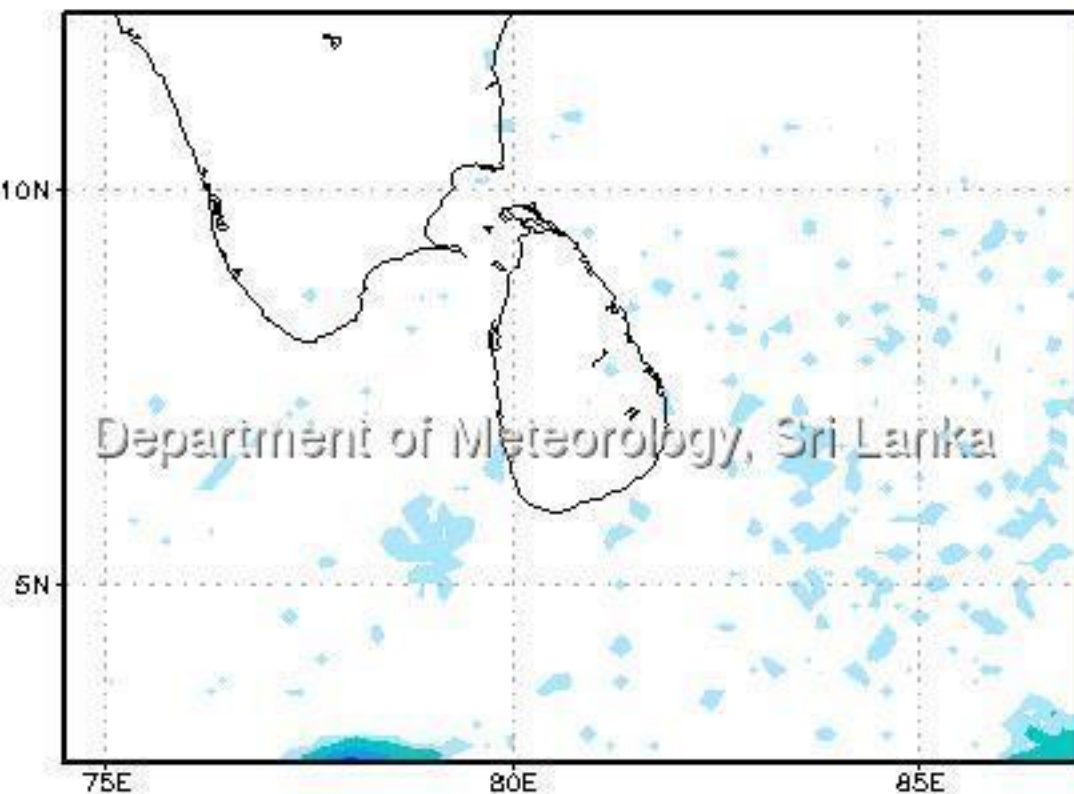


Precipitation (mm)

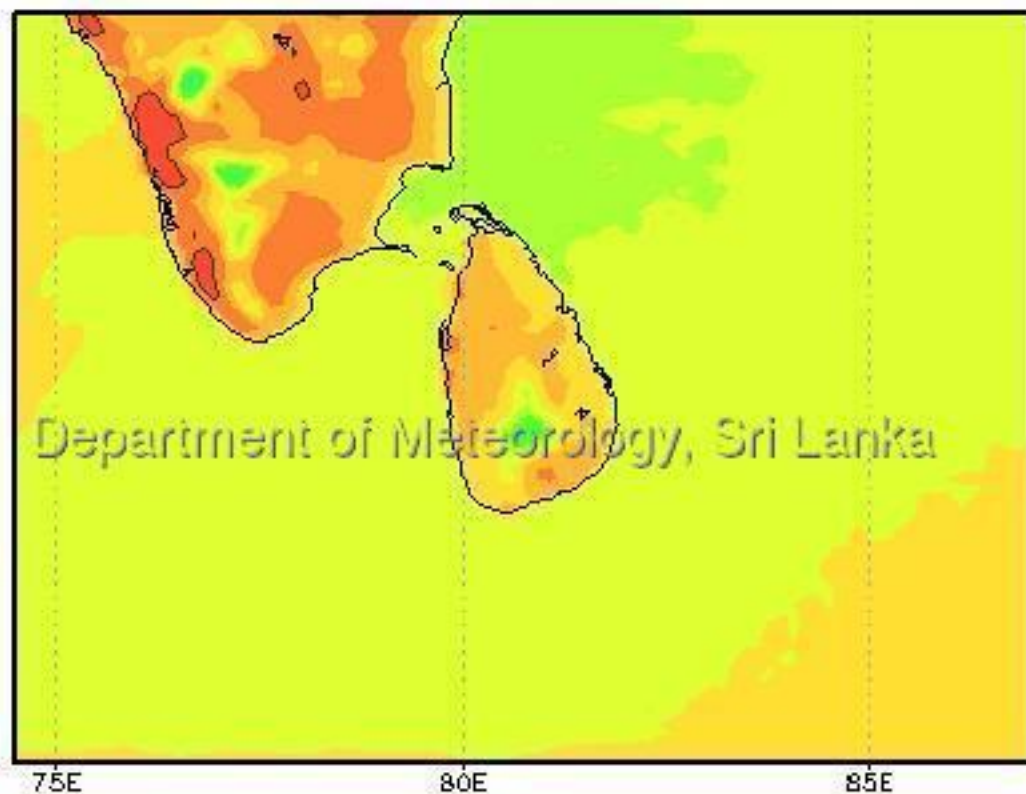
Max Temp.(°C)



Precipitation (mm)

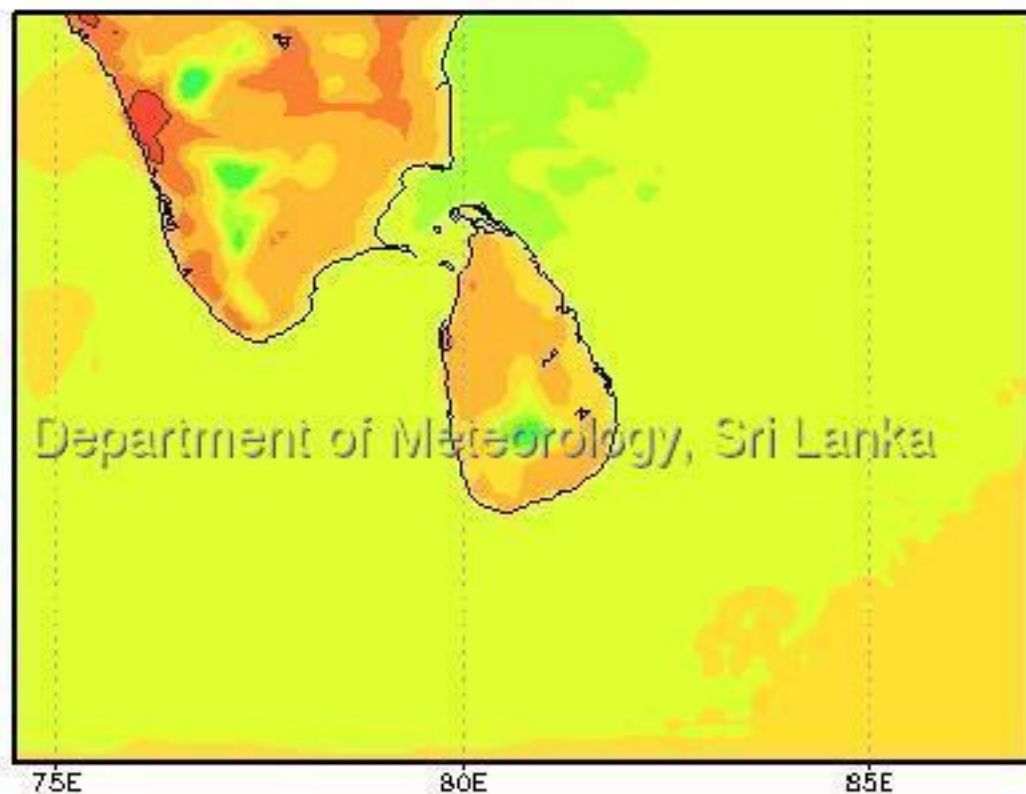
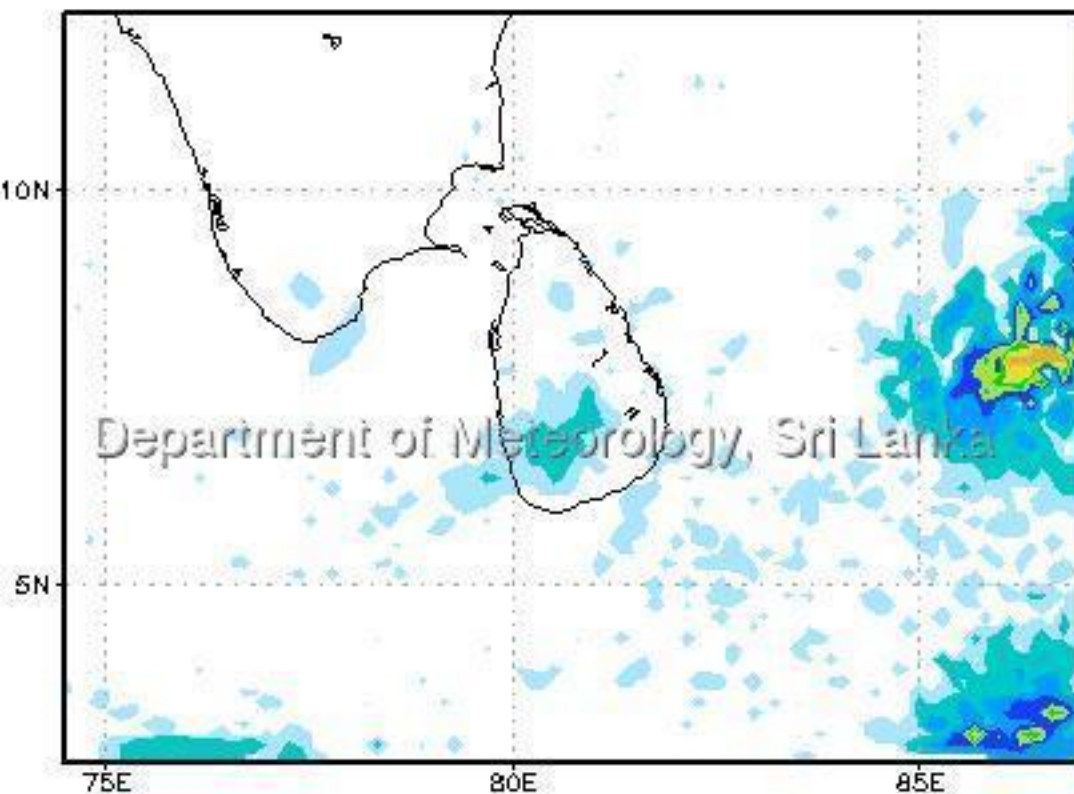


Max Temp.(°C)



Precipitation (mm)

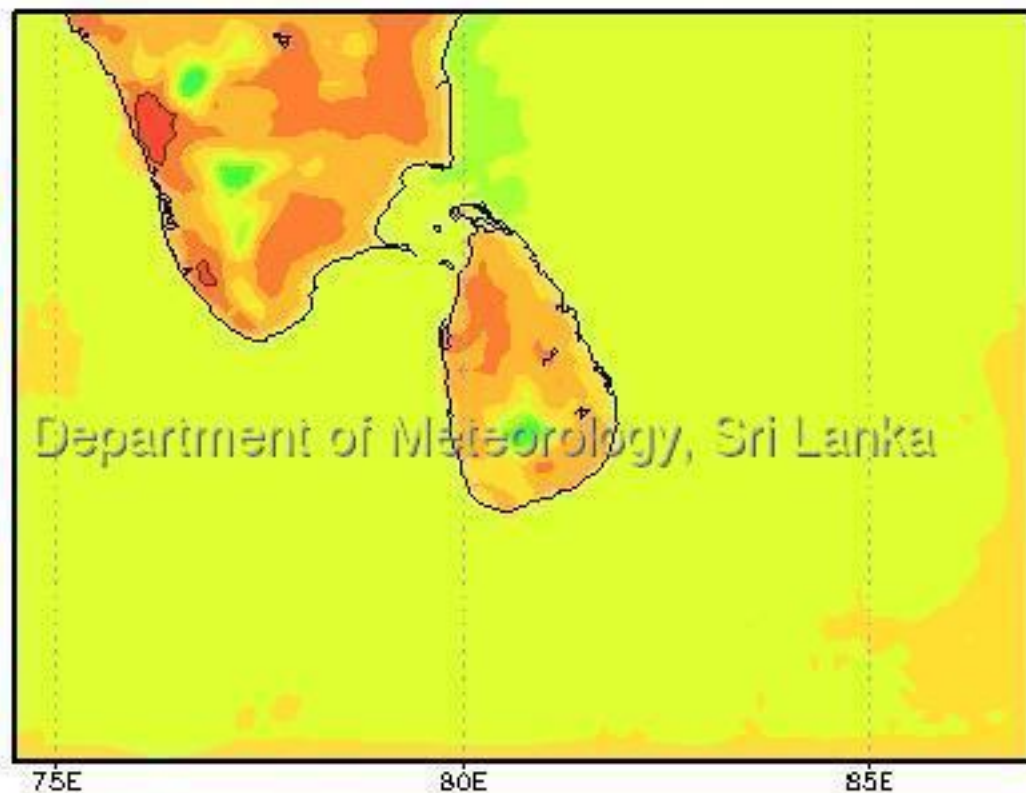
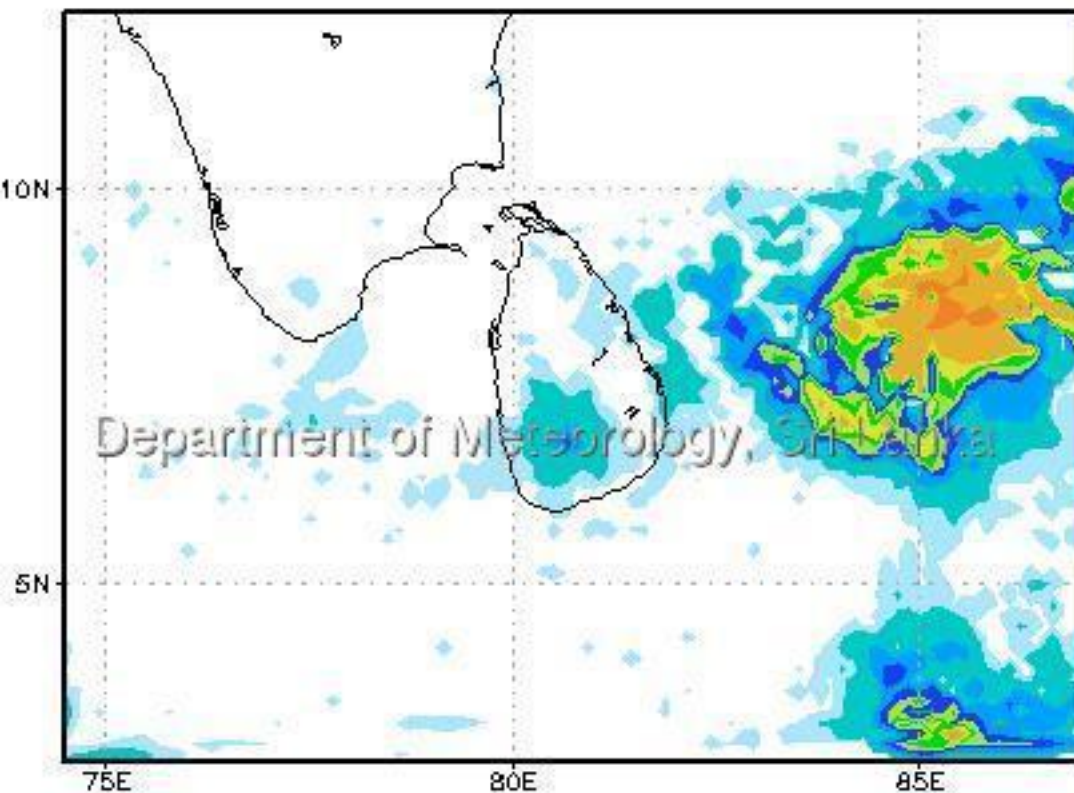
Max Temp.(°C)





Precipitation (mm)

Max Temp.(°C)



Precipitation (mm)

Max Temp.(°C)

