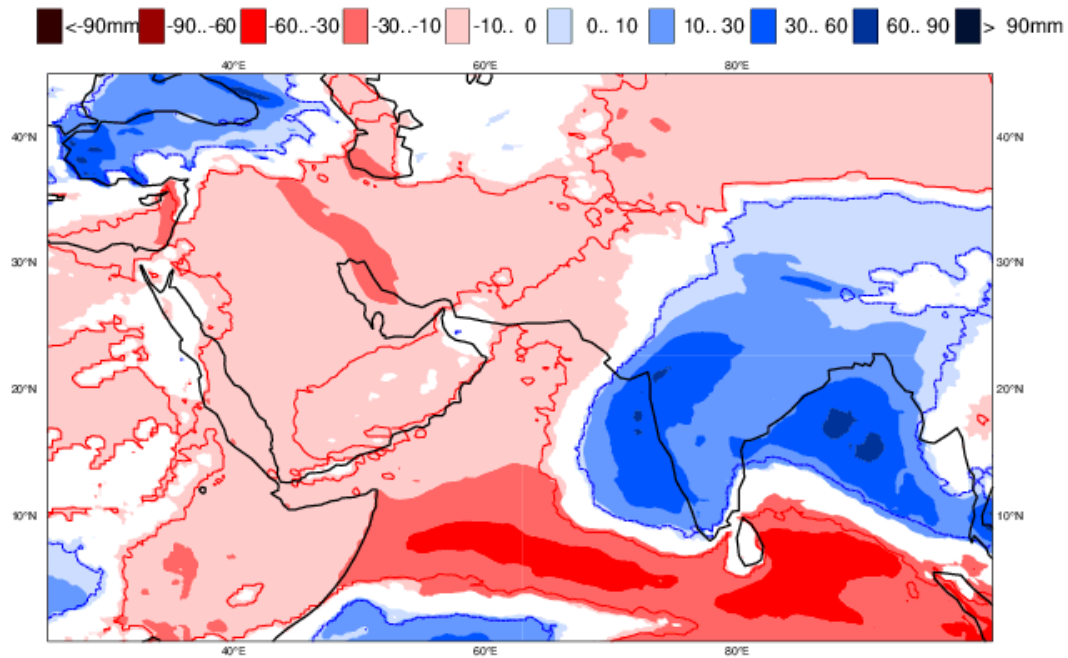


Weekly rainfall anomaly forecast

Rainfall anomaly during 29 Nov – 05 Dec 2021



Weekly Rainfall anomaly

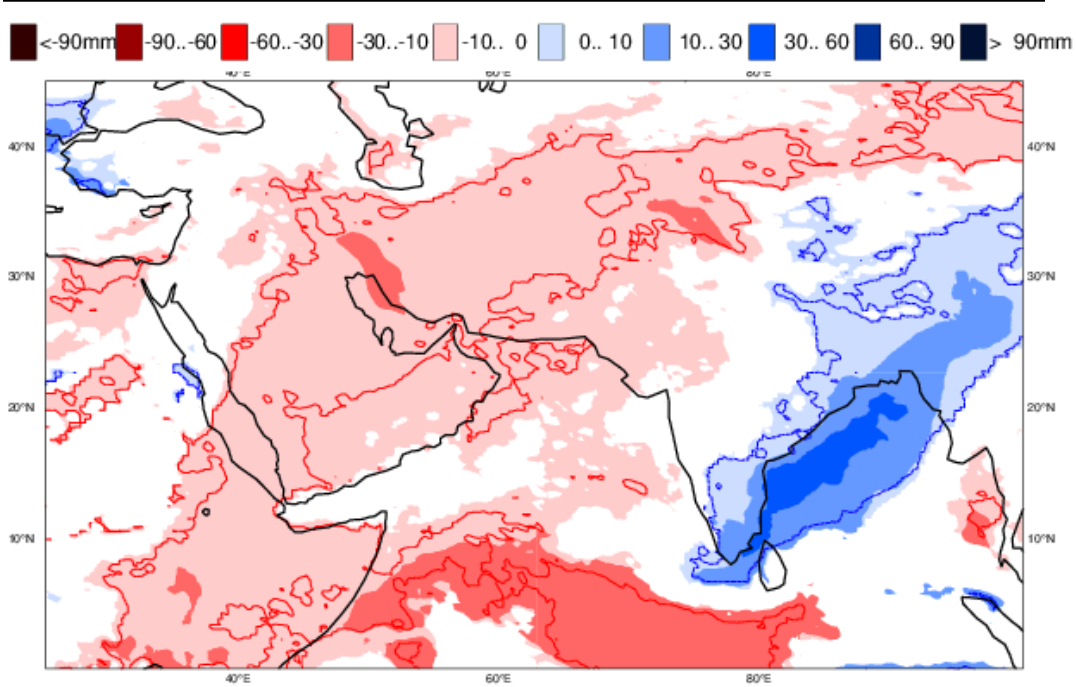
Positive

Negative

Source-ECMWF

Below Normal over North eastern and Northern coastal areas and no signal elsewhere.

Rainfall anomaly during 06 Dec – 12 Dec 2021



Weekly Rainfall anomaly

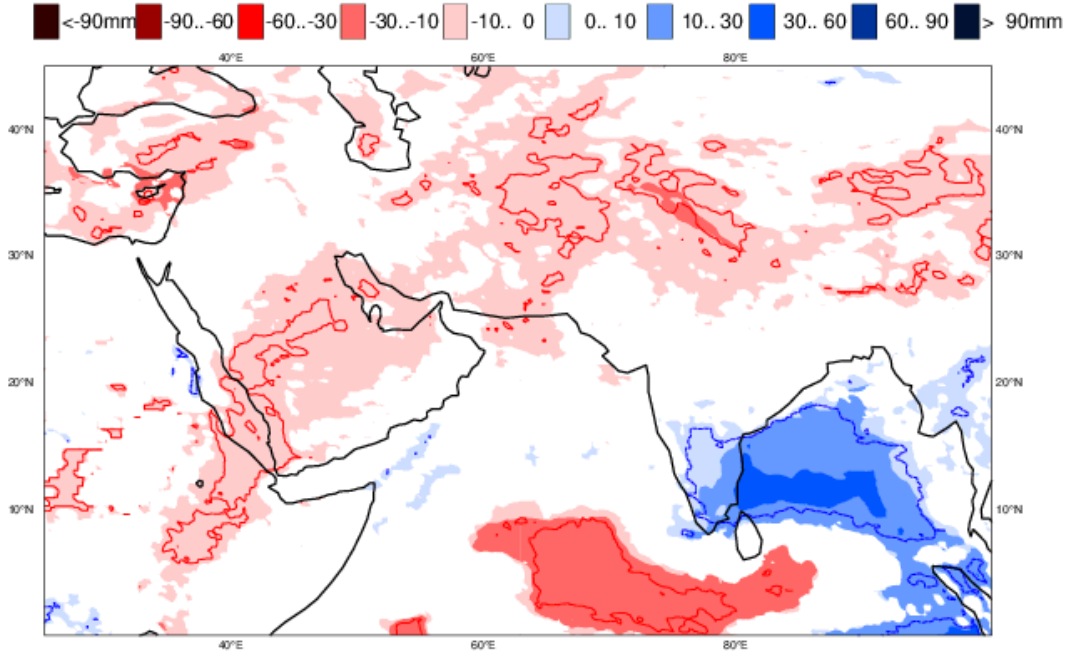
Positive

Negative

Source-ECMWF

Above normal over Northern part and Northwestern coastal areas. No signal elsewhere.

Rainfall anomaly during 13 Dec – 19 Dec 2021



Weekly Rainfall anomaly

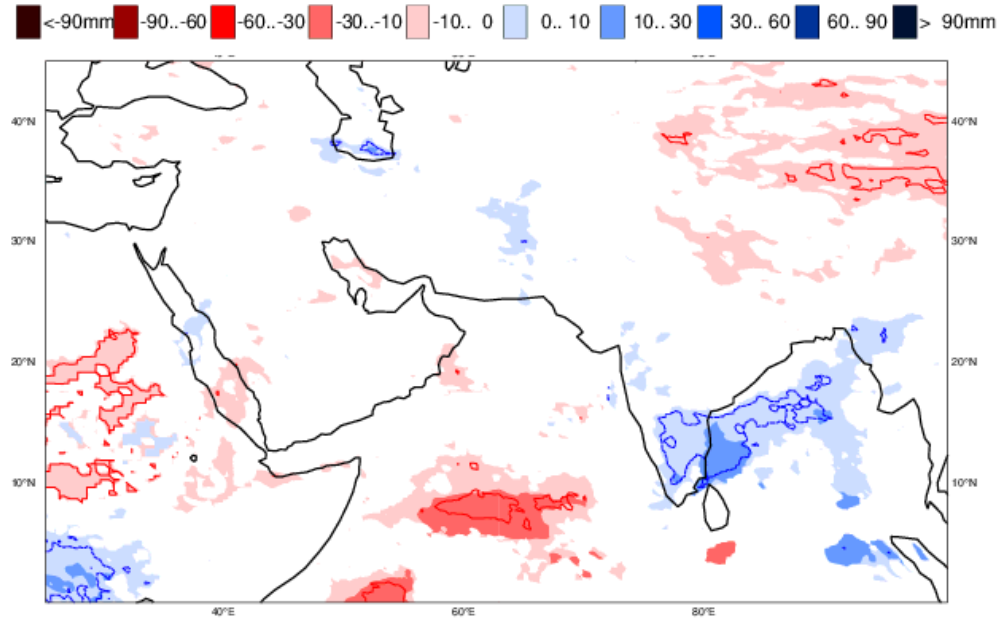
Positive

Negative

Source-ECMWF

Above normal over Northern part . No signal elsewhere.

Rainfall anomaly during 20 Dec – 26 Dec 2021



Weekly Rainfall anomaly

Positive

Negative

Source-ECMWF

No signal over Sri Lanka.