

# Weekly Weather Summery

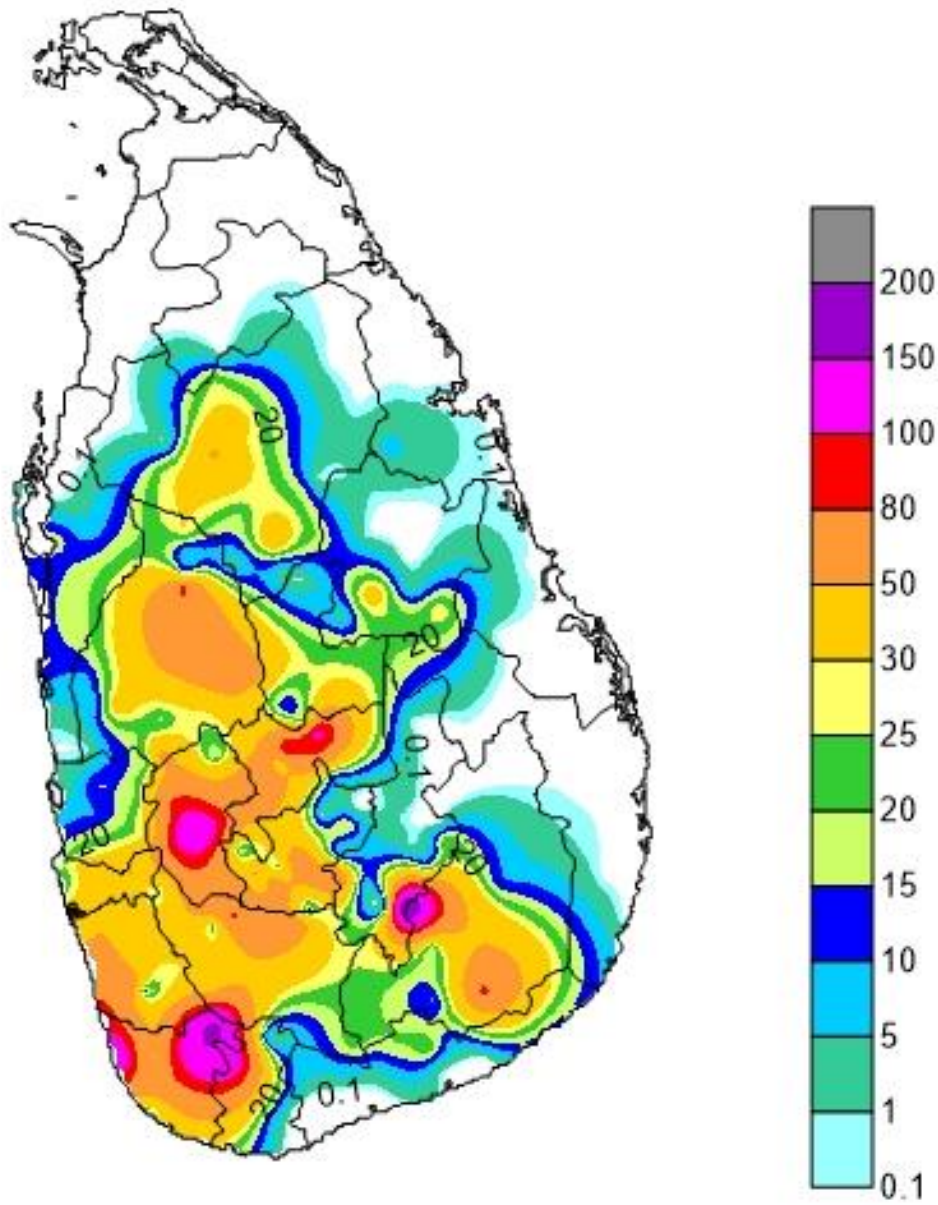
**8-14 April 2019**

## **1. Rainfall**

After a period of hot and dry weather conditions over the island that affected to hydro power generation and also to day today activities of people, the first inter-monsoon conditions gradually established over the island during this week. Convective activity was enhanced and afternoon thundershowers were reported over most parts, particularly in Uva, Sabaragamuwa, Central, Southern, North-western, Western and North-central provinces. Convective activity spread into Eastern province during mid of the week (on 11<sup>th</sup> ).

There were fairly heavy to heavy rainfall in Kegalle, Galle and Matara districts. Moderate to fairly heavy rainfall was reported in Western, Central, Sabaragamuwa provinces and also in Kurunegala and Monaragala districts. Light to moderate rainfall were reported elsewhere except Northern province and Eastern province except an isolated showers on 11<sup>th</sup>.

The highest daily recorded rainfall of 113.0 mm on 10<sup>th</sup> of April and the highest weekly total amount of 231.0 mm were reported at Poonagala Estate, Bandarawela in Badulla district. In the case of hydro catchments areas, moderate to fairly heavy rainfalls were received except Randenigala and Rantambe where no rainfalls reported in this week.



**Figure 1: Total rainfall (mm) during the week**

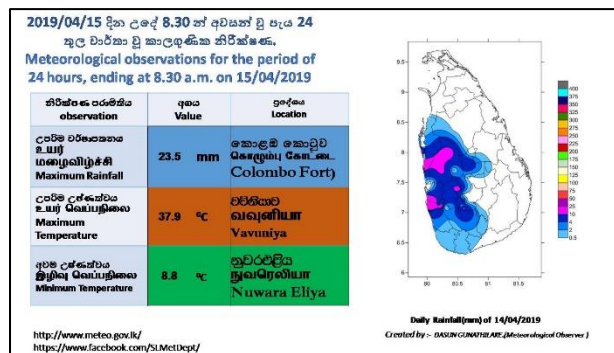
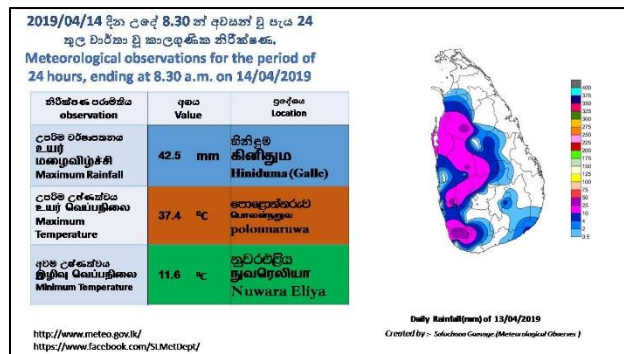
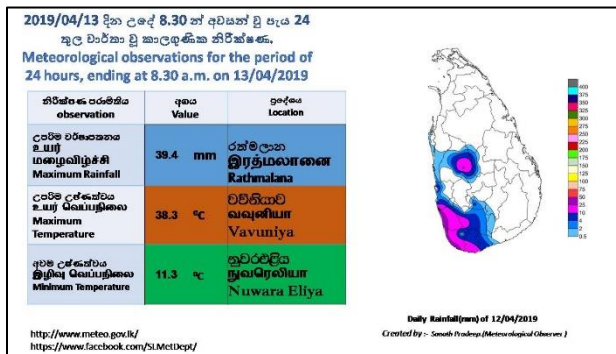
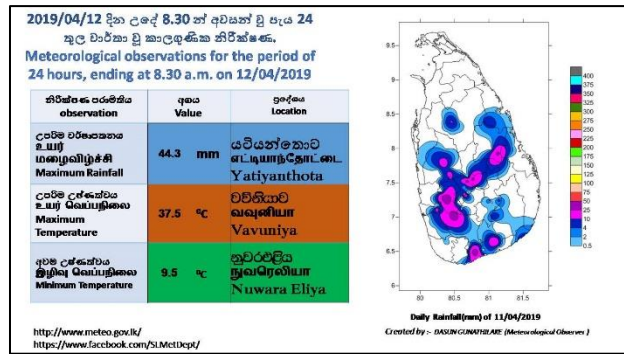
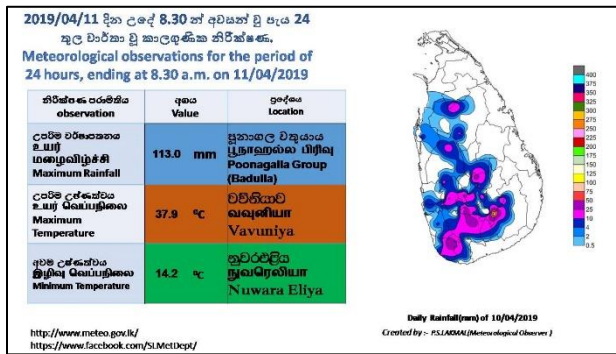
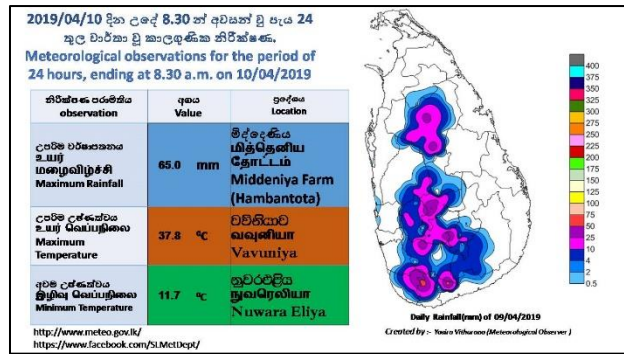
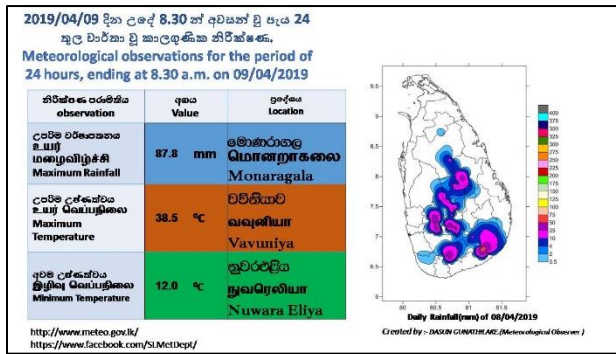


Figure 2. Daily Rainfall (mm) and maximum and minimum temperatures ( $^{\circ}$ C) during the week.

Main Meteorological Stations	Rainfall (mm)
Anuradhapura	54.5
Badulla	1.2
Bandarawela	22.1
Batticaloa	0
Colombo	21.2
Galle	37.6
Hambanthota	2.1
Jaffna	0
Monaragala	87.8
Katugasthota	96.5
Katunayake	7.4
Kurunagala	35.5
Maha Illuppallama	18.7
Mannar	0
Polonnaruwa	0
Nuwara Eliya	20.5
Pothuvil	0
Puttalam	20.2
Rathmalana	44.2
Rathnapura	15.6
Trincomalee	0
Vavuniya	2
Mattala	25

Hydro-Catchment Areas	
Station	Rainfall (mm)
Castlereigh	66.5
Norton	41.0
Maussakele	33.6
Canyon	35.6
Lakshapana	56.7
Upper Kotmale	70.1
Kotmale	48.6
Victoriya	12.7
Randenigala	0.0
Rantambe	0.0
Bowatenna	28.6
Ukuwela	41.4
Samanala Wawa	12.0
Kukuleganaga	35.0
Maskeliya	71.4

Table-01 Total Rainfall (mm) at Main Meteorological stations and hydro catchment areas during the week.

## 2. Temperature

On the apparent northward relative motion of the Sun, it was directly over the latitudes of Sri Lanka during 05<sup>th</sup> to 15<sup>th</sup> of April. Therefore during this week the sun was overhead from south part to the north part of the island.

The highest day time (maximum) temperature, 38.5 °C was reported at Vauniya main meteorological station on 08<sup>th</sup> April and also the daily highest temperatures were reported at Vauniya during 6 days of the week except on 13<sup>th</sup> that was reported at Polonnaruwa. The lowest minimum temperature was 8.8°C reported at Nuwara-Eliya main meteorological station on 14<sup>th</sup> of April.

Day time temperatures at all the main meteorological stations were predominantly mostly above normal during the week. It was approximately 3°C or 04°C above

normal at Kurunegala and Vavuniya. Maximum temperatures were around 2-3<sup>0</sup>C above normal at most meteorological stations except Batticaloa, Galle, Mannar and Puttalam where it was around (1-2)<sup>0</sup>C above normal during the week. It was a little above/below or about normal at Nuwara-Eliya.

Night time Minimum temperatures at Badulla, Jaffna and Trincomalee were varied mostly within 1-2 degree from the climatology and it was mostly above normal elsewhere during the week. It was around (2-4)<sup>0</sup>C above normal on 14<sup>th</sup> April over the island.

### 3. Wind

Winds at surface level were mostly variable in direction and speeds were very light.

Winds in lower atmosphere up to approximately 1500m height, wind were north-easterly to south-easterly or mostly variable in direction and speeds were very light as at surface level. That conditions were much favored to develop convective clouds over the inland areas of the island in the afternoon.