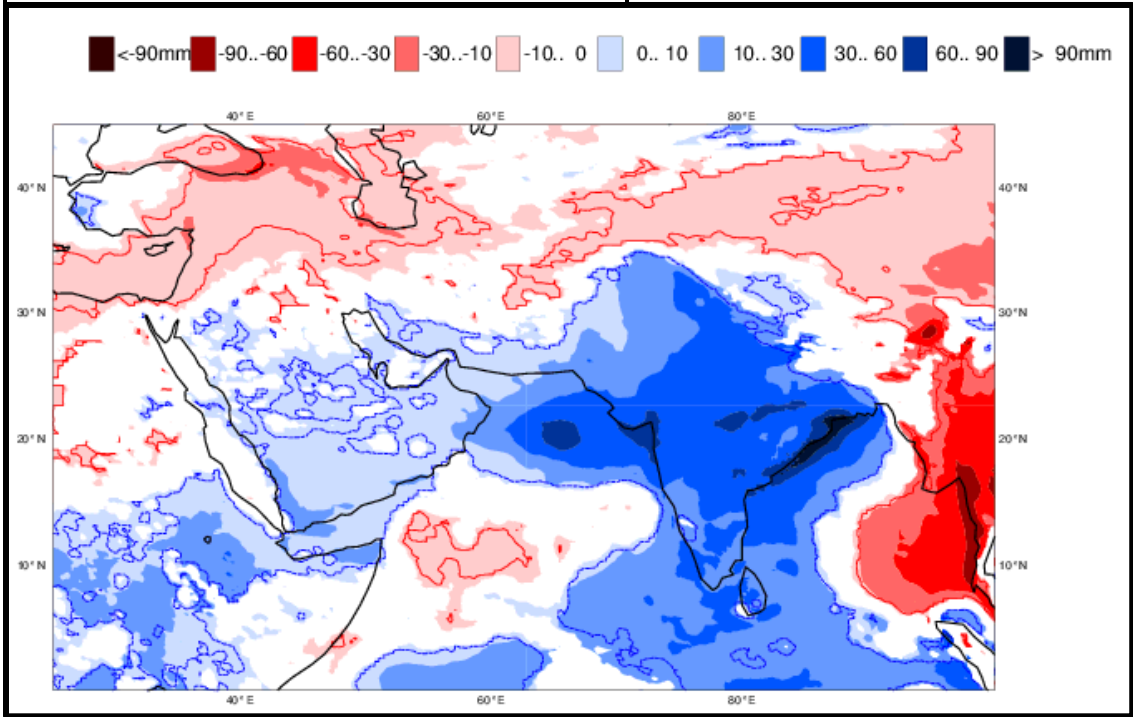


# Weekly rainfall anomaly forecast

## Rainfall anomaly during 23-29 September 2019



**Weekly Rainfall anomaly**

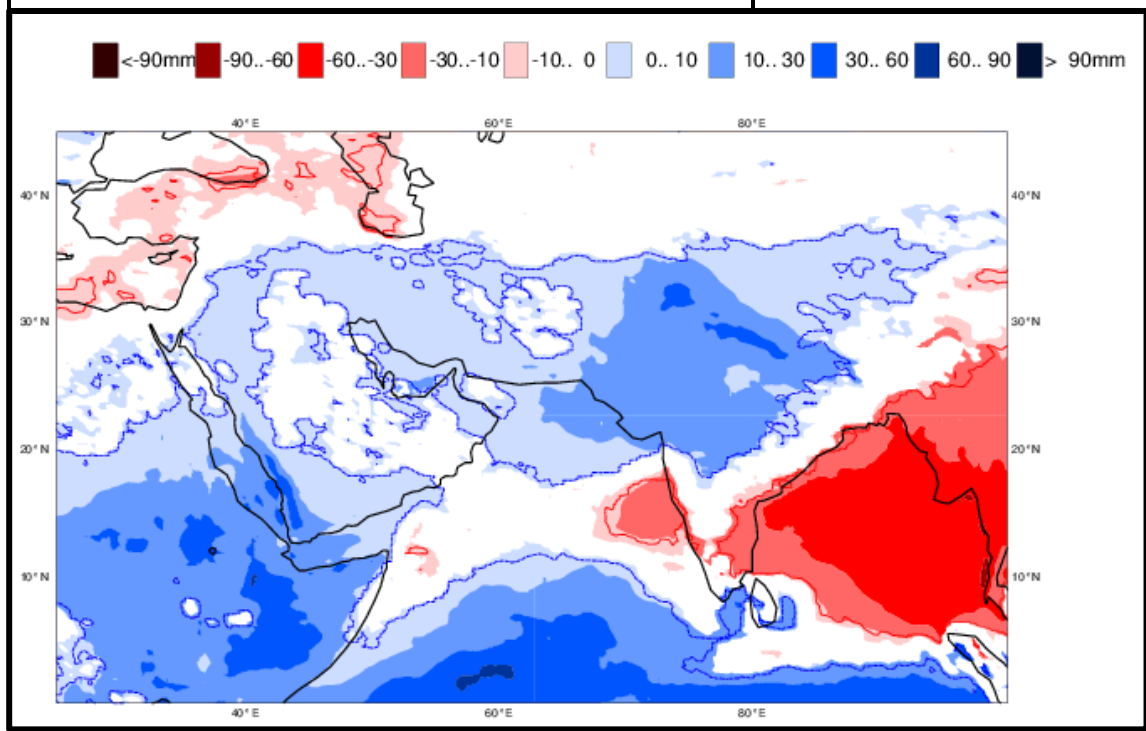
Positive

Negative

Source -ECMWF

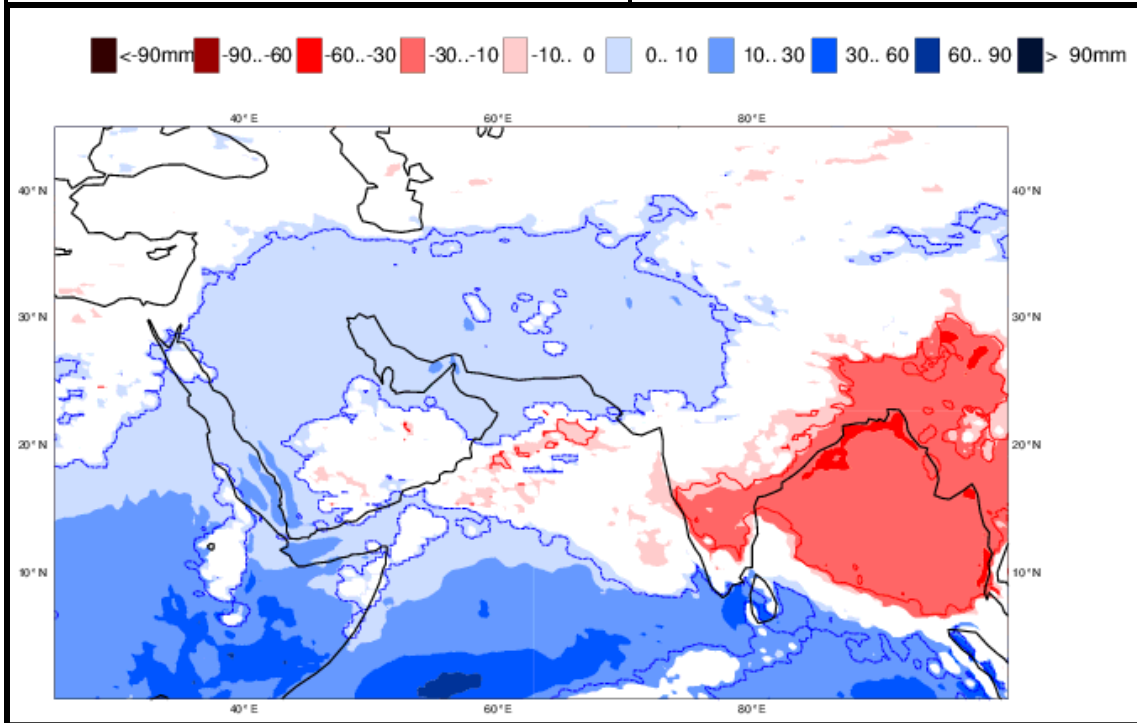
Positive anomaly over SL

## Rainfall anomaly during 30 September – 06 October 2019



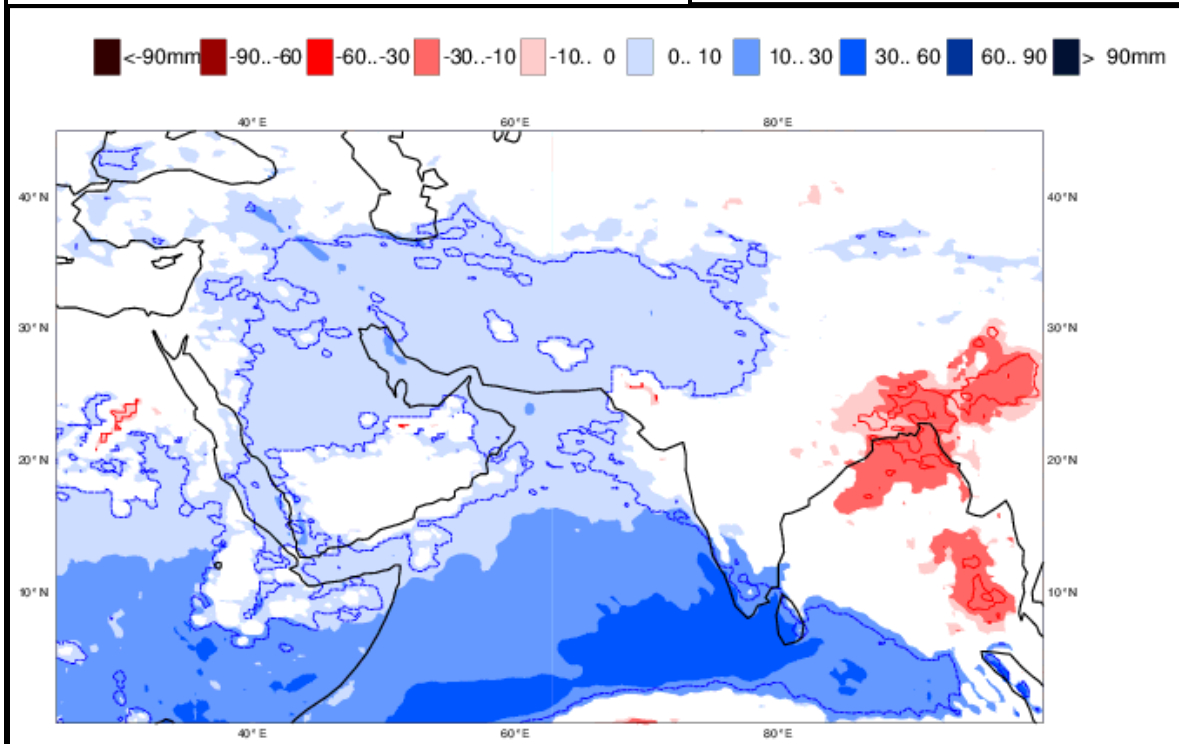
Near normal over the country except the southern and north-western parts where anomaly is positive

**Rainfall anomaly during 07-13 October 2019**



**Positive anomaly over inland areas and near normal elsewhere**

**Rainfall anomaly during 14-20 October 2019**



**Positive anomaly over SL**