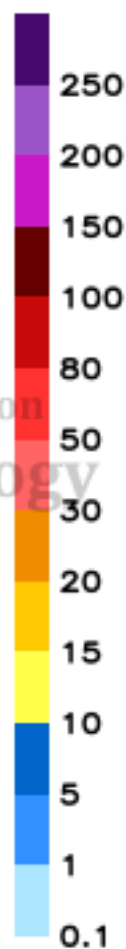
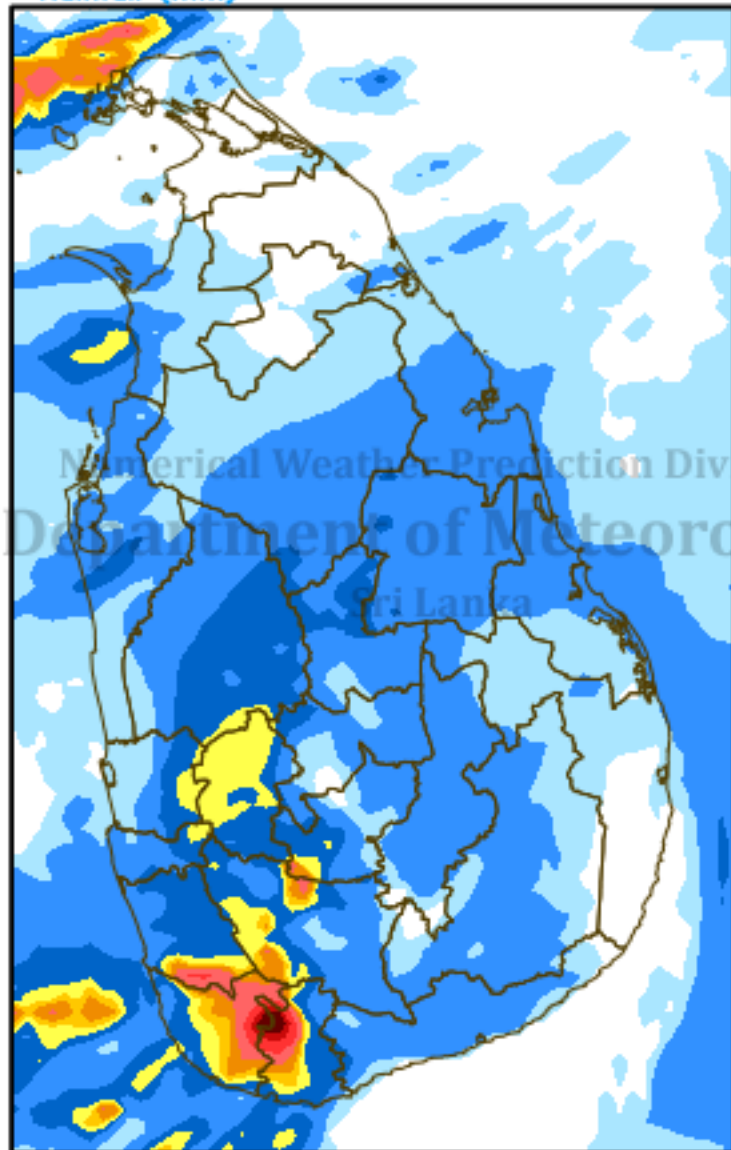


RAINFALL (mm) & MAX. 2m TEMPERATURE (°C) FORECAST (24h)

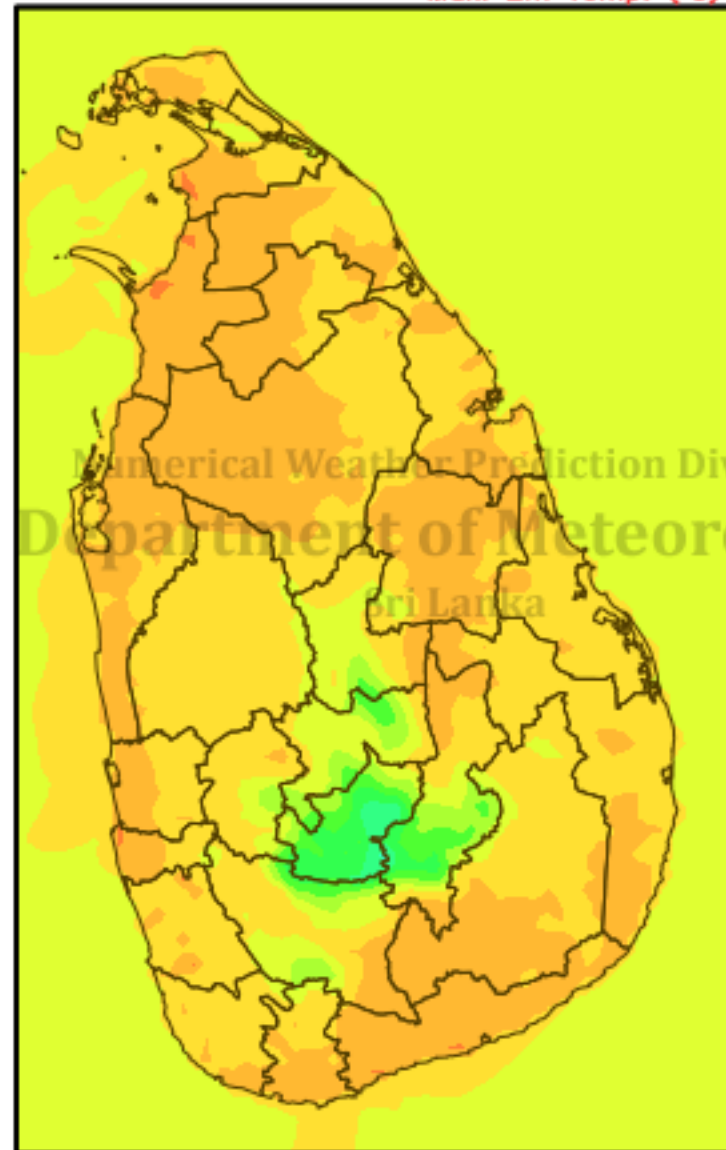
Valid for 24 hours ending at 03 UTC of 07 DEC 2018

(Based on model (5km) initialized at 00 UTC 06 DEC 2018)

Rainfall (mm)



Max. 2m Temp. (°C)



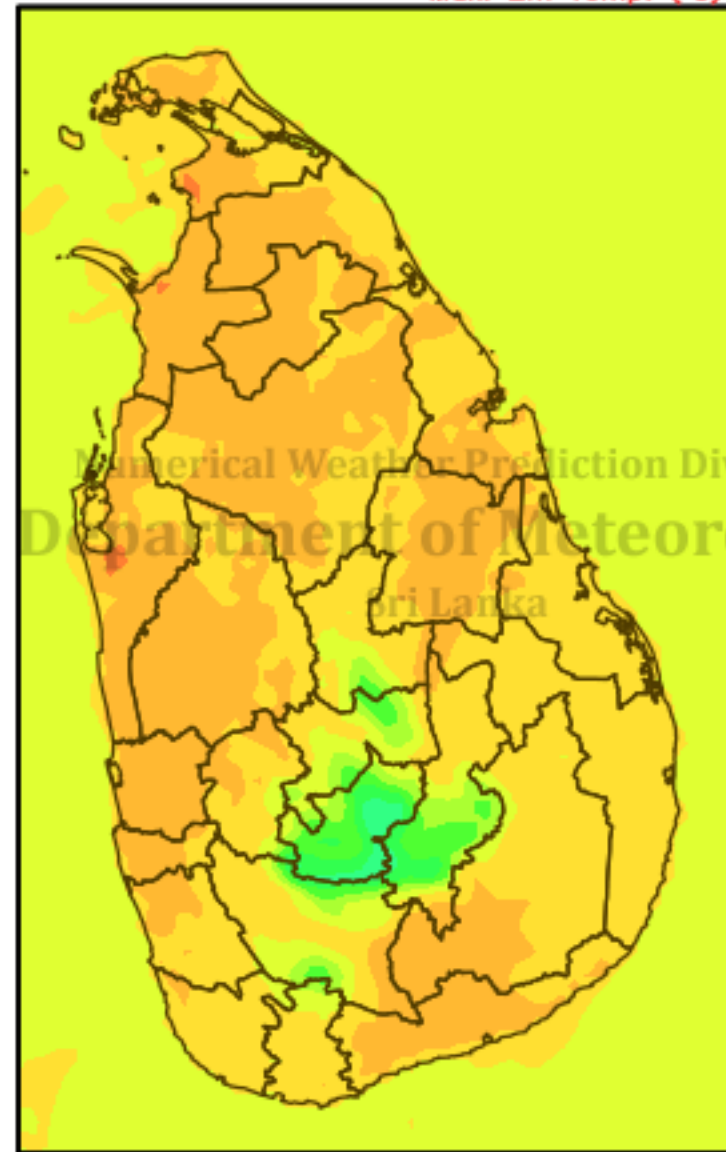
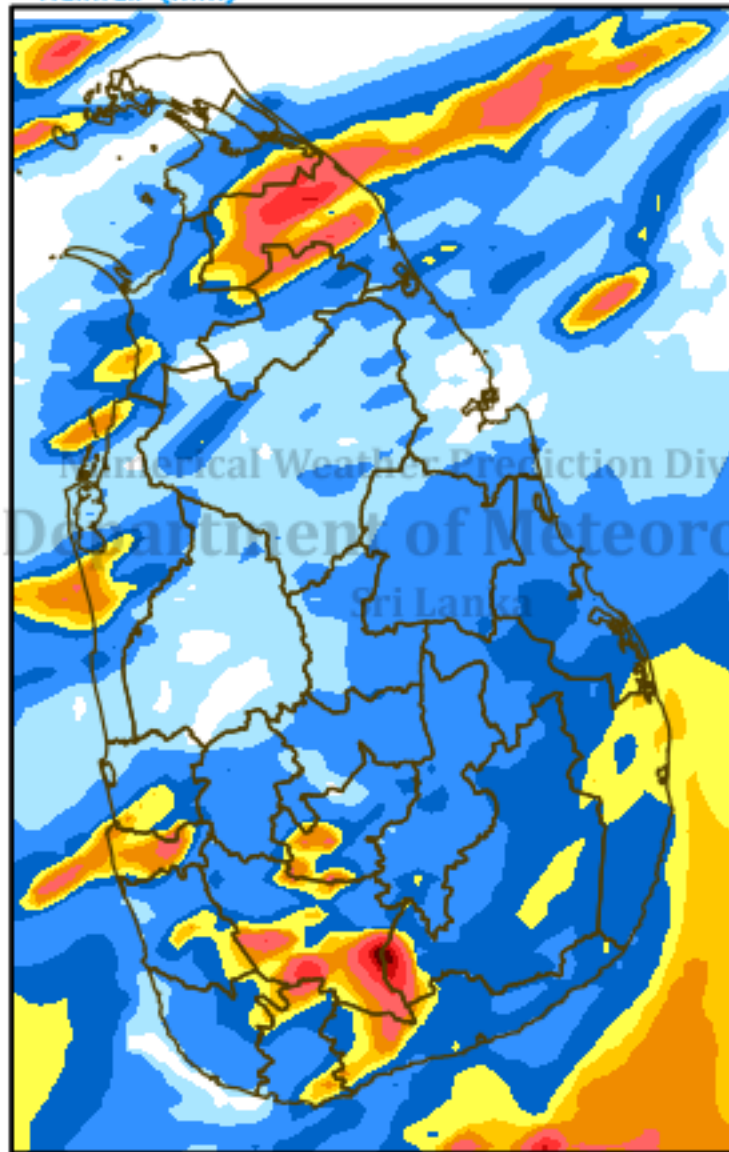
RAINFALL (mm) & MAX. 2m TEMPERATURE (°C) FORECAST (24h)

Valid for 24 hours ending at 03 UTC of 08 DEC 2018

(Based on model (5km) initialized at 00 UTC 06 DEC 2018)

Rainfall (mm)

Max. 2m Temp. (°C)



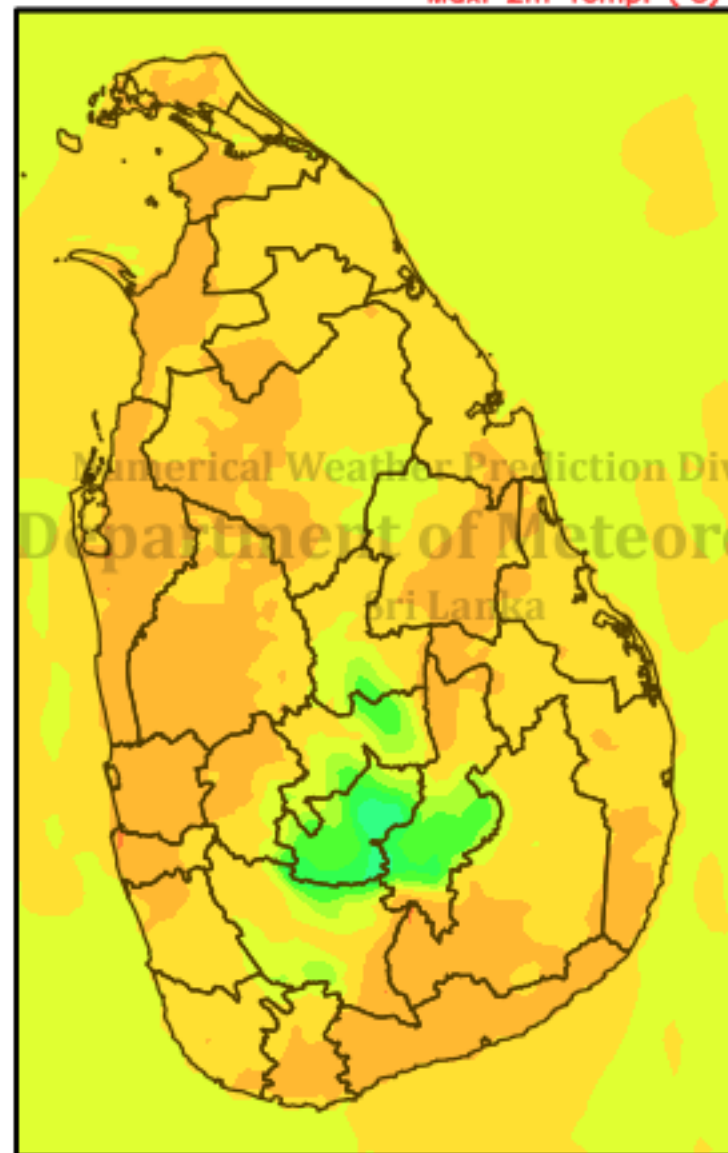
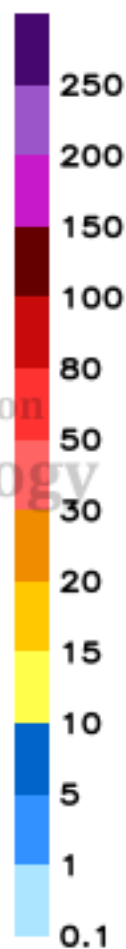
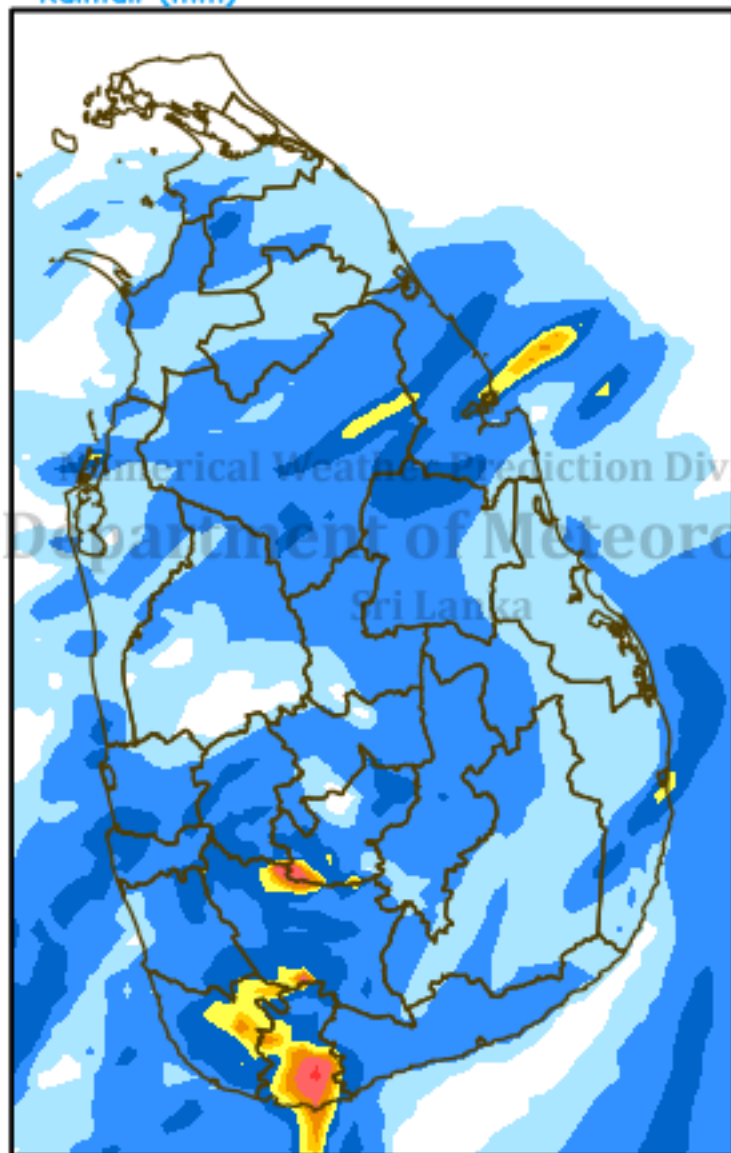
RAINFALL (mm) & MAX. 2m TEMPERATURE (°C) FORECAST (24h)

Valid for 24 hours ending at 03 UTC of 09 DEC 2018

(Based on model (5km) initialized at 00 UTC 06 DEC 2018)

Rainfall (mm)

Max. 2m Temp. (°C)



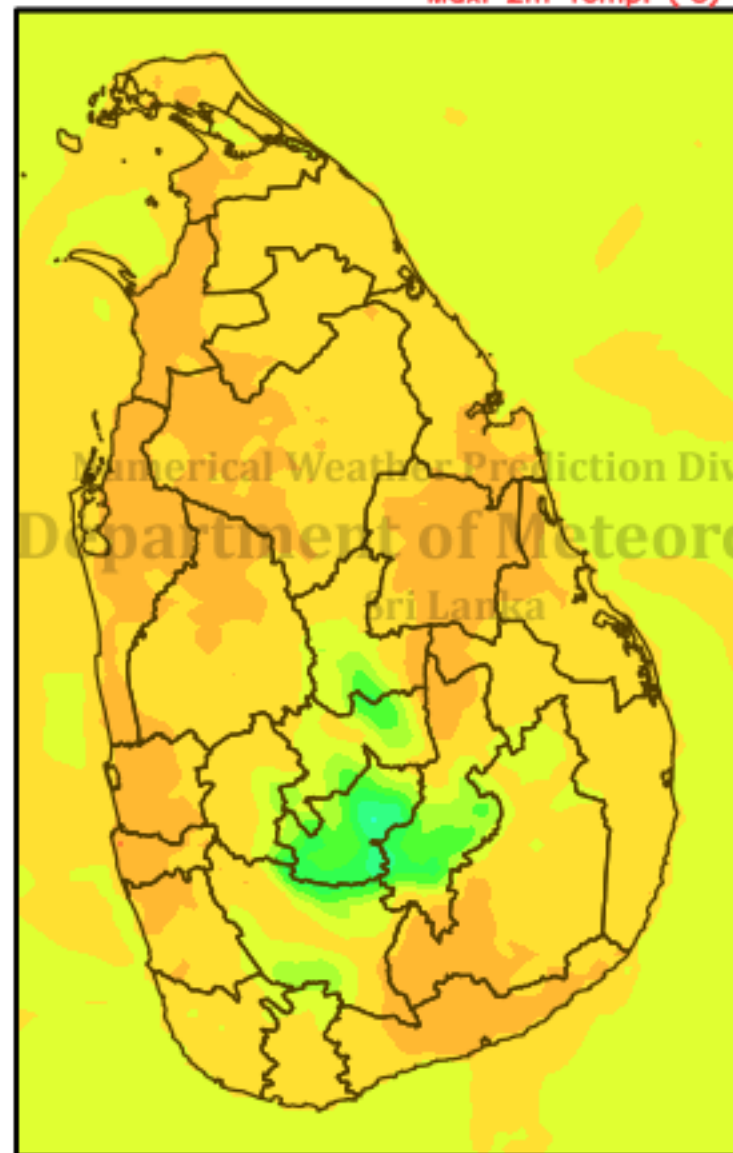
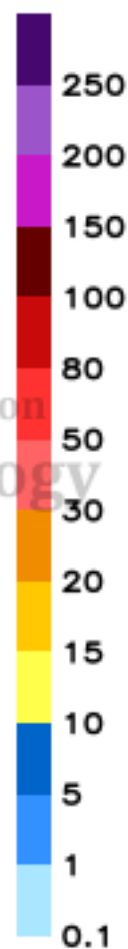
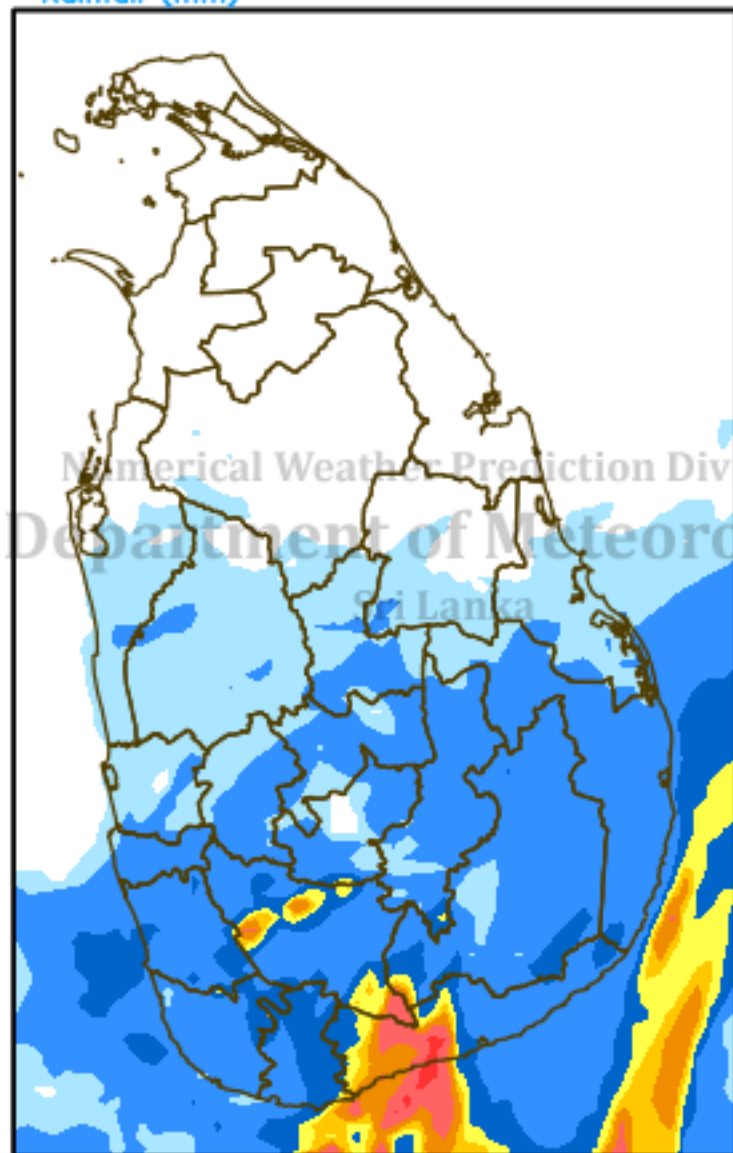
RAINFALL (mm) & MAX. 2m TEMPERATURE (°C) FORECAST (24h)

Valid for 24 hours ending at 03 UTC of 10 DEC 2018

(Based on model (5km) initialized at 00 UTC 06 DEC 2018)

Rainfall (mm)

Max. 2m Temp. (°C)



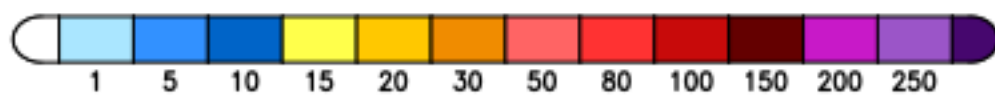
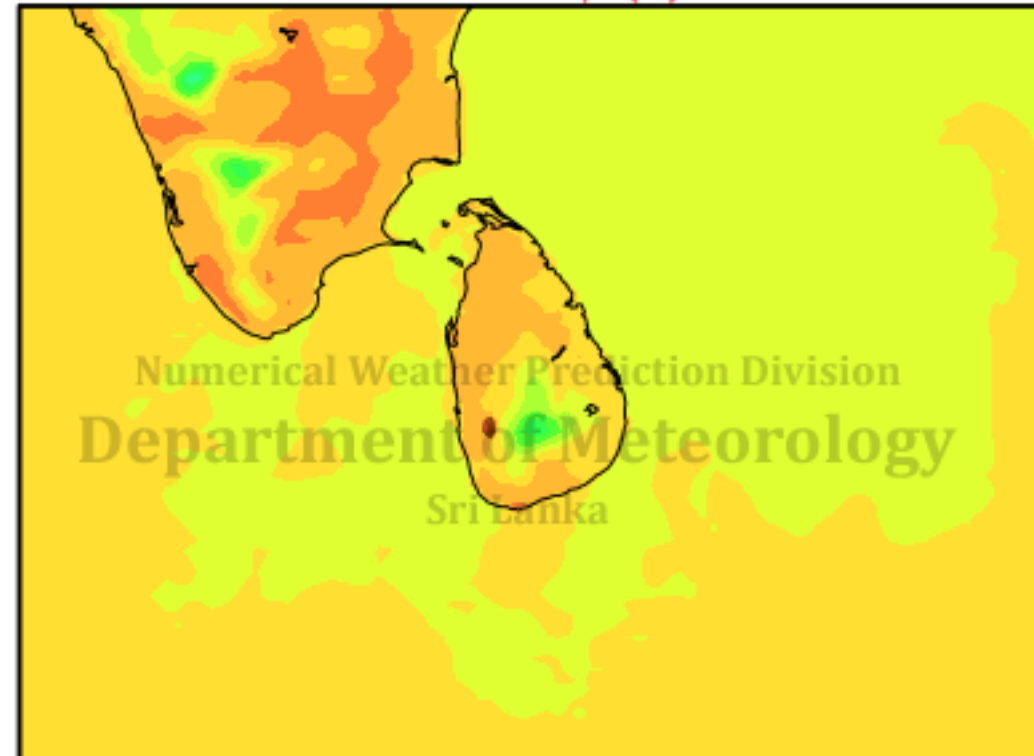
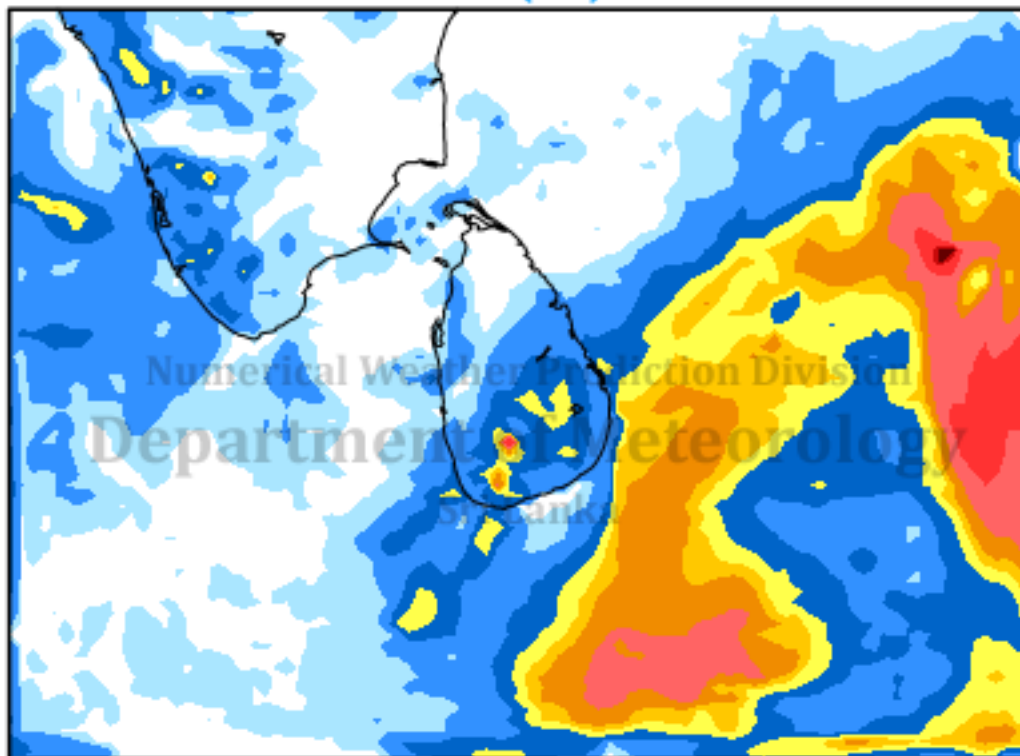
RAINFALL (mm) & MAX. 2m TEMPERATURE (°C) FORECAST (24h)

Valid for 24 hours ending at 03 UTC of 07 DEC 2018

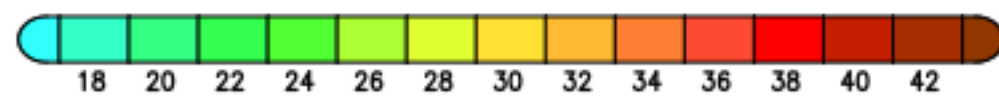
(Based on model (15km) initialized at 00 UTC 06 DEC 2018)

Rainfall (mm)

Max. 2m Temp. (°C)



mm



°C

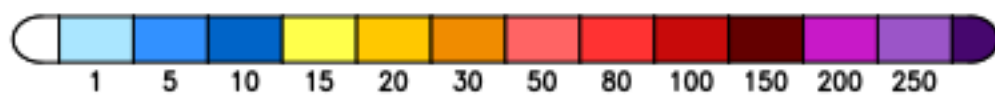
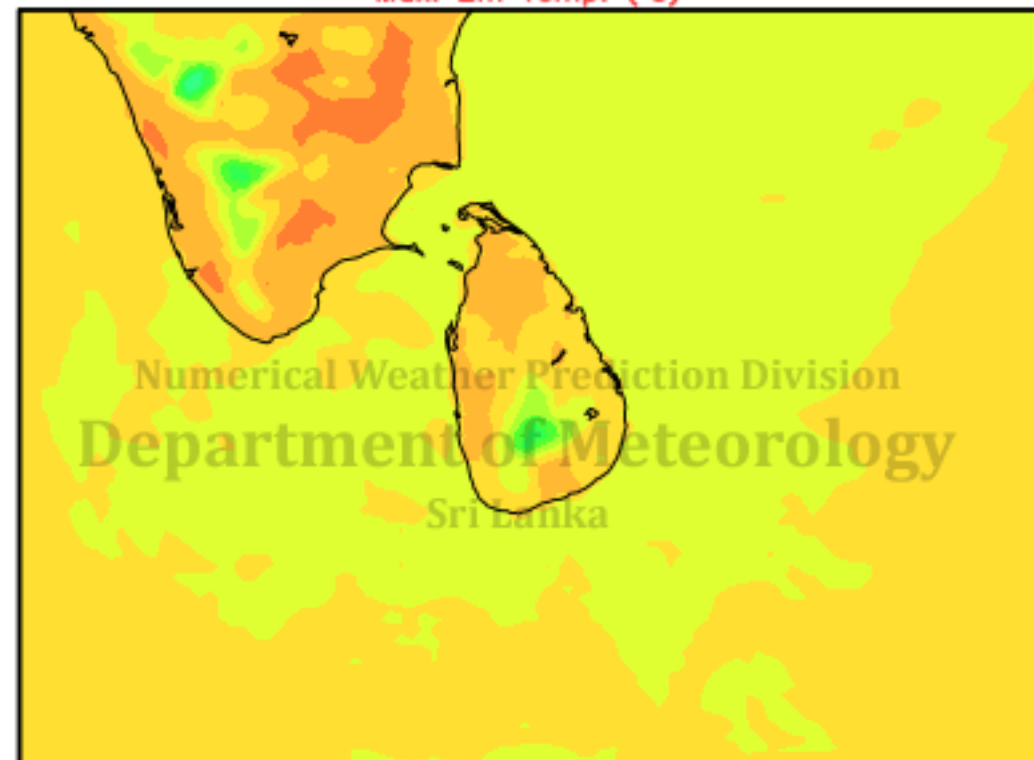
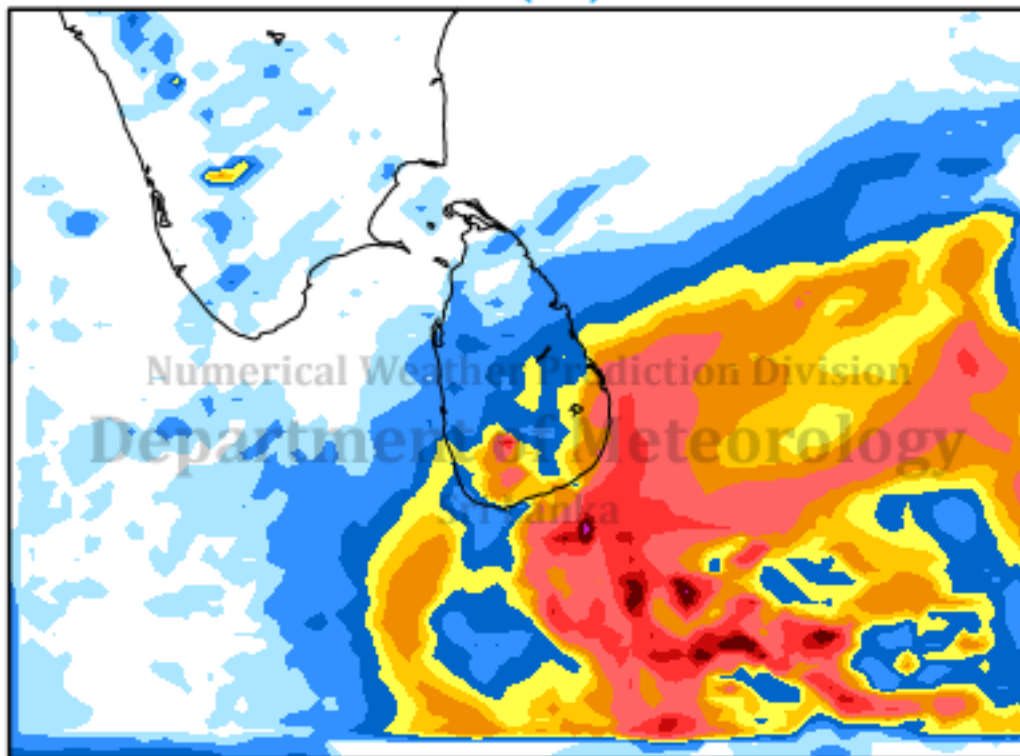
RAINFALL (mm) & MAX. 2m TEMPERATURE (°C) FORECAST (24h)

Valid for 24 hours ending at 03 UTC of 08 DEC 2018

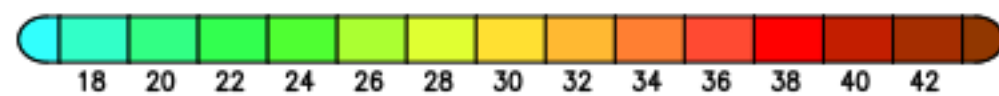
(Based on model (15km) initialized at 00 UTC 06 DEC 2018)

Rainfall (mm)

Max. 2m Temp. (°C)



mm



°C

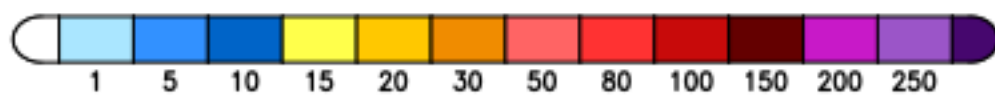
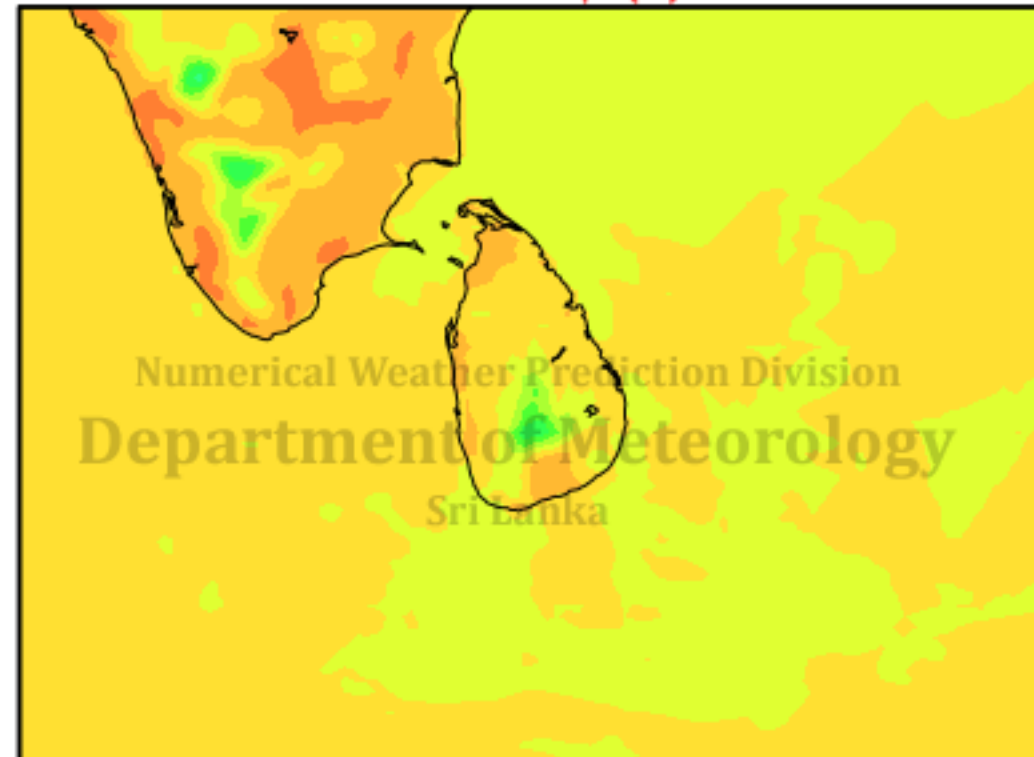
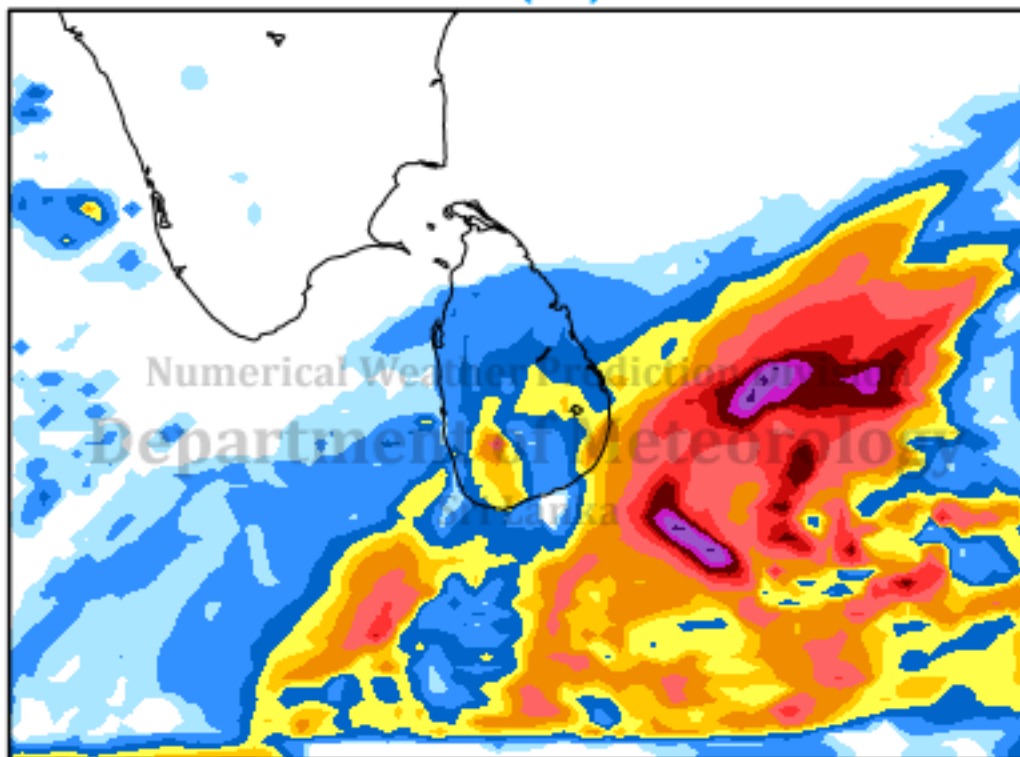
RAINFALL (mm) & MAX. 2m TEMPERATURE (°C) FORECAST (24h)

Valid for 24 hours ending at 03 UTC of 09 DEC 2018

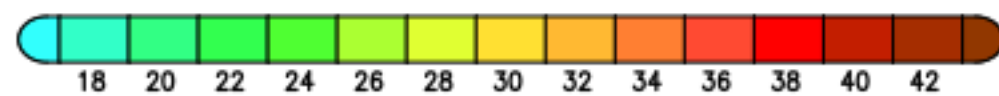
(Based on model (15km) initialized at 00 UTC 06 DEC 2018)

Rainfall (mm)

Max. 2m Temp. (°C)



mm



°C

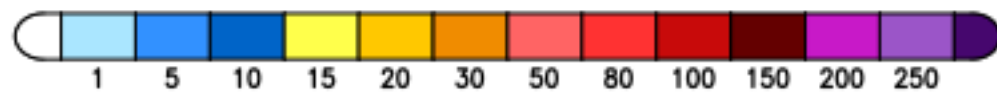
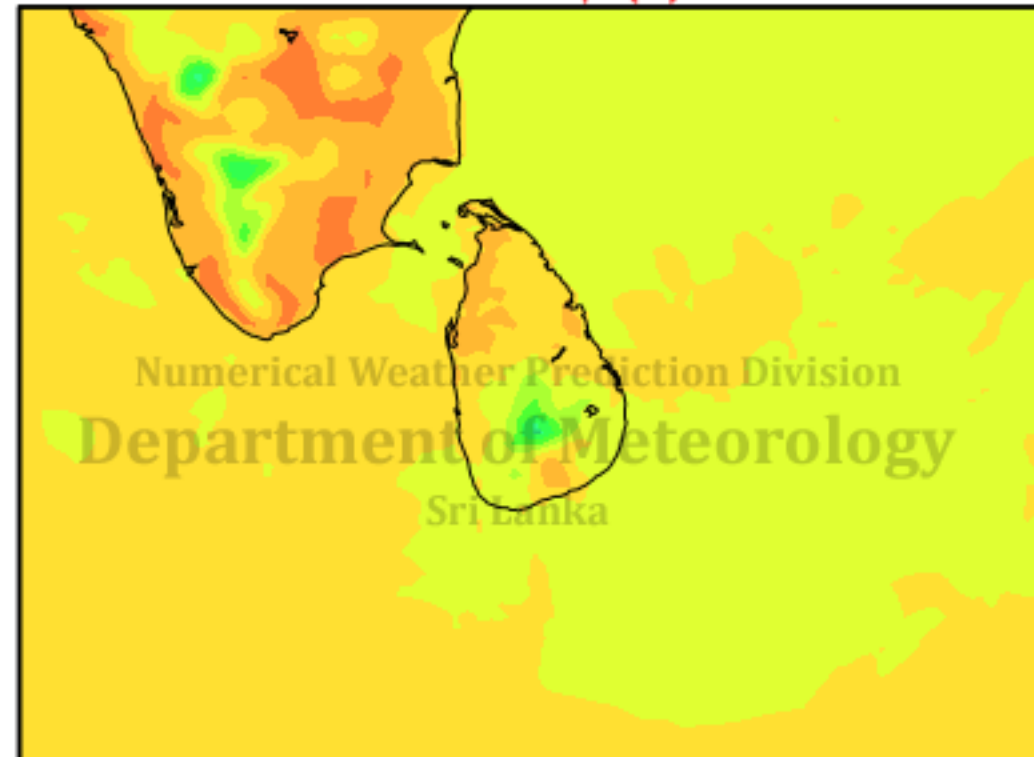
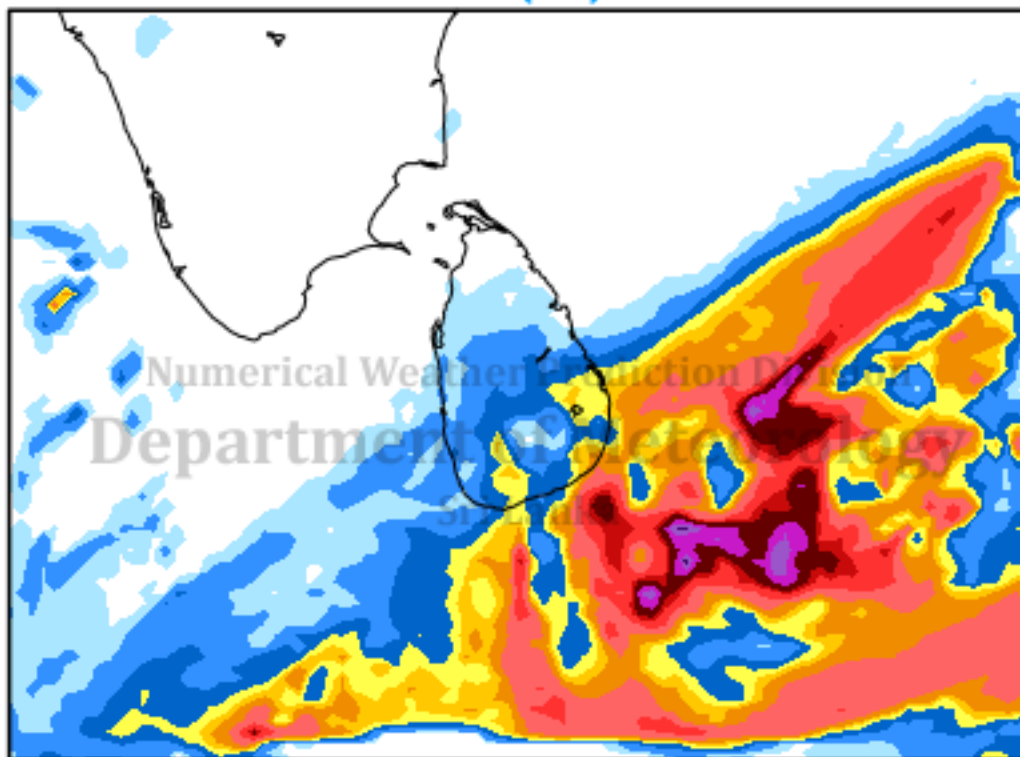
RAINFALL (mm) & MAX. 2m TEMPERATURE (°C) FORECAST (24h)

Valid for 24 hours ending at 03 UTC of 10 DEC 2018

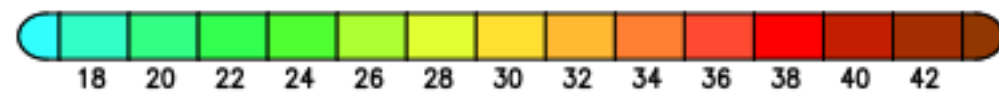
(Based on model (15km) initialized at 00 UTC 06 DEC 2018)

Rainfall (mm)

Max. 2m Temp. (°C)



mm



°C