

காலநிலை வாரிசை அறிக்கை Weather Report

2020.10.17 சூன் 0830 ஠ அலகன் லு லு 24 ஈடலா

for the 24 hour period ending at 0830SLTS on this date

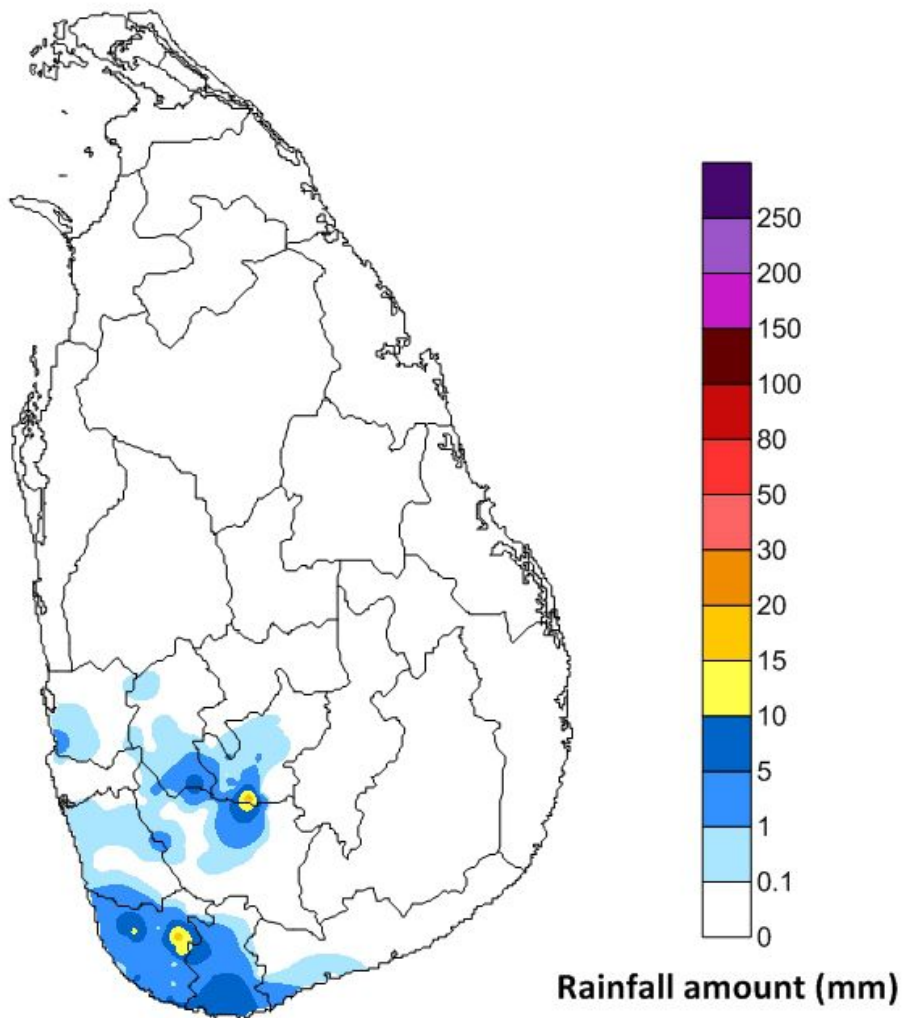
| காலநிலை டி.ஊ. ஠ ஠வகயா஠ வலிமலா ஠வலிமல நலலயலங்கல Meteorological Stations | ஠லலல ஠லலலலல(஠ல) | | லலலலலல(஠஠) |
|--|-------------------------------|----------------|------------------|
| | நலலலல ஠லலலலல (஠ல) | | மலல ஠லலலல (஠ல.஠) |
| | Temperature in the shade (°C) | | Rainfall (mm) |
| | ஠லலலலல Max | அலல ஠லலலல Min. | Daily Rainfall |
| அலலலலலலலலலலலலAnuradhapura | 33.7 | 23.9 | 0.0 |
| லலலலல ஠லலலலBadulla | 30.9 | 14.3 | 0.0 |
| லலலலலலலலலலலலலலBandarawela | 26.1 | 15.8 | 0.0 |
| ஠லலலலலல ஠லலலலலலலலலலBatticaloa | 37.7 | 23.5 | 0.0 |
| லலலலல ஠லலலலலலலலலலColombo | 30.6 | 26.2 | 0.0 |
| லலலல ஠லலலGalle | 29.0 | 26.5 | 1.3 |
| லலலலலலலலல ஠லலலலலலலலலலHambanthota | 29.7 | 24.4 | 0.0 |
| லலலலல ஠லலலலலலலலலலJaffna | 31.6 | 26.4 | 0.0 |
| லலலலலலல ஠லலலலலலலலலல Monaragala | 34.9 | 18.5 | 0.0 |
| லலலலலலலலல ஠லலலலலலலலலல Katugasthota | 29.2 | 18.5 | 0.0 |
| லலலலலலல ஠லலலலலலலலலலKatunayake | 30.5 | 23.8 | 0.0 |
| லலலலலலல ஠லலலலலலலலலல Kurunagala | 31.4 | 24.0 | 0.0 |
| ஠ல ஠லலலலலலலல ஠லலலலலலலலலலலல Maha Illuppallama | 32.2 | 23.9 | 0.0 |
| ஠லலலலல ஠லலலலலMannar | 31.2 | 26.8 | 0.0 |
| லலலலலலலலல ஠லலலலலலலலலல polonnaruwa | 35.7 | 24.9 | 0.0 |
| லலலலலலல ஠லலலலலலலலலலNuwara Eliya | 18.2 | 12.3 | TR |
| லலலலலலல ஠லலலலலலலலலலPothuvil | 33.2 | 23.6 | 0.0 |
| லலலலலல ஠லலலலலPuttalam | 31.6 | 26.6 | 0.0 |
| லலலலலல ஠லலலலலலலலலலRathmalana | 31.6 | 26.5 | 0.0 |
| லலலலலல ஠லலலலலலலலலலRathnapura | 31.4 | 22.5 | TR |
| லலலலலலல ஠லலலலலலலலலலTrincomalee | 34.7 | 25.2 | TR |
| லலலலலலல ஠லலலலலலலலலலVavuniya | 34.9 | 23.9 | 0.0 |
| ஠லலலல ஠லலலலMattla | 34.7 | 23.6 | 0.0 |

| லலலல ஠லலலல ஠லலல ஠லலலல ஠லலலல ஠லலலல ஠லலலல ஠லலலல Hydro Catchment Areas | | | |
|---|--------------|--|--------------|
| லலலலலல ஠லலல ஠லலலல ஠லலலலலலலலலல Rainfall Stations | ஠஠-஠ல.஠ - mm | லலலலலல ஠லலல ஠லலல ஠லலலல ஠லலலலலலலலலல Rainfall Stations | ஠஠-஠ல.஠ - mm |
| லலலலலலலலலலலலCastlereigh | 0.0 | லலலலலலல ஠லலலலலலலலலலRandenigala | 0.0 |
| லலலலலலலலலலலலNorton | 0.7 | லலலலலல ஠லலலலலலலலலலRantambe | 0.0 |
| லலலலலலலலலலலலலலலல Maussakele | 4.0 | லலலலலலல ஠லலலலலலலலலலBowatenna | 0.0 |
| லலலலலலலலலலலலCanyon | 0.0 | லலலலலல ஠லலலலலலலலலலUkuwela | 0.0 |
| லலலலலலலலலலலலலலலலLakshapana | 0.7 | லலலலலலலலலலலலலலலலலலலலSamanala Wawa | 0.0 |
| லலலல ஠லலலலலலலலலலலலலலலல Upper Kotmale | 1.2 | லலலலல ஠லலல ஠லலலலலலலலலலKukuleganaga | 0.0 |
| லலலலலலல ஠லலலலலலலலலலலல Kotmale | 0.0 | லலலலலலலலலலலலலலலலலலலலMaskeliya | 0.0 |
| லலலலலலலலலலலலலலலலலலலல Victoriya | 0.0 | லலலலலலலலலலலலலலலல Neboda | NA |

| அலலலல ஠லலலலல ஠லலல ஠லலலல ஠லலலல ஠லலலல ஠லலலல ஠லலலல Other Rainfall Stations | | | |
|---|--------------|--|--------------|
| லலலலலலலலல ஠லலல ஠லலலல ஠லலலலலலலலலல Rainfall Stations | ஠஠-஠ல.஠ - mm | லலலலலல ஠லலல ஠லலல ஠லலலல ஠லலலலலலலலலல Rainfall Stations | ஠஠-஠ல.஠ - mm |
| லலலலலலலலல ஠லலலலல ஠லலலலலலலலலல Poddiewela Farm | 12.1 | லலலலலலல ஠லலலலலலலலலல Wallipuram | 0.0 |
| லலலலலல ஠லலலலலலலலலல Mapalana | 8.3 | லலலலல ஠லலல ஠லலலலலலலலலல Delft | 0.0 |
| லலலலலலலலலலலலலலலலHiniduma | 7.0 | லலலலலலலலலலலலலலலலலலலலலலலல Kilinochchi Agril | 0.0 |
| லலலலல ஠லலலலலலலலலல Watawala | 1.3 | லலலலலலல ஠லலலலல ஠லலலலல Elephant Pass | 0.0 |
| லலலலல ஠லலலலலலலலலல Karagala | 1.0 | லலலலலலலலலலலலலலலலலலலல Chavakachcheri | 0.0 |
| லலலலலலல ஠லலலலலலலலலல Bandaragama | 0.5 | லலலலலலலலல ஠லலலலலலலலலல Akkarayan | 0.0 |
| லலலலலல ஠லலலலலலலலலலலலலலலல Kotagala Rosita | 0.3 | லலலலலலலலல ஠லலலலலலலலலலலலலலல Hilpanakandura | 0.0 |
| லலலலலலலலல ஠லலலலலலலலலல Point Pedro | 0.0 | லலலலலல ஠லலலலலலலலலலலலலல Dyraba Estate | 0.0 |
| லலலலலலலலலலலலலலலலலலலல Nainathive | 0.0 | லலலலலலலலல ஠லலலலலலலலலல Kahagolla Estate | 0.0 |
| லலலலலல ஠லலலலலலலலலல Almapil | 0.0 | லலலலலல ஠லலலலல ஠லலலலலலலலலலலலலல Poonagalla Group | 0.0 |

லலலல ஠லலலலல / ஠லலலலல ஠லலலலலலலலலல / Highest Rainfall : 21.0 mm லலலலல ஠லலலலலலலலலல ஠லலலலலலலலலல Alton Estate(Nuwara Eliya)-AWS

Rainfall distribution over the period of 24 hours ending at 8.30 a.m. on 17-10-2020



Department of Meteorology
Sri Lanka