

காலநிலை வாரிசை அறிக்கை Weather Report

2021.07.05 சூன் ௫ 0830 ஠ அலிசன் லு லு 24 ஈடலா

for the 24 hour period ending at 0830SLTS on this date

காலநிலை டி.ஊ. மலயங்கல வலிமல்டலவலயல் நலயலங்கல் Meteorological Stations	ஈலலலல ஠லலலலல(ஈல)		லலலலலல(஠஠)
	நலலலல் ஠லலலலலல (ஈ)		மலல ஠ுந்ஈ (஠஠஠)
	Temperature in the shade (°C)		Rainfall (mm)
	஠லலலலல Max	அலல ஠ுந்஠Min.	Daily Rainfall
அலலலலலலலலலலலலAnuradhapura	34.1	25.3	0.0
லலலலலலலலBadulla	31.3	17.9	0.0
லலலலலலலலலலலலBandarawela	24.9	18.2	0.0
஠லலலலலலலலலலலலBatticaloa	33.4	26.5	0.0
லலலலலலலலலலலலColombo	30.6	27.2	0.0
லலலலலலலலGalle	29.3	26.6	0.2
லலலலலலலலலலலலHambanthota	30.4	26.0	0.0
லலலலலலலலலலலலJaffna	32.8	27.2	0.1
லலலலலலலலலலலல Monaragala	34.6	21.1	0.0
லலலலலலலலலலலல Katugasthota	29.5	23.1	TR
லலலலலலலலலலலலKatunayake	30.5	26.9	TR
லலலலலலலலலலலல Kurunagala	32.2	25.6	TR
லலலலலலலலலலலல Maha Illuppallama	33.6	25.2	0.0
லலலலலலலலலலலலMannar	30.6	27.2	0.0
லலலலலலலலலலலல polonnaruwa	36.4	27.3	0.0
லலலலலலலலலலலலNuwara Eliya	19.4	14.4	0.1
லலலலலலலலலலலலPothuvil	34.8	25.6	0.0
லலலலலலலலலலலலPuttalam	32.0	27.0	0.0
லலலலலலலலலலலலRathmalana	31.8	27.4	0.0
லலலலலலலலலலலலRathnapura	31.3	24.4	0.5
லலலலலலலலலலலலTrincomalee	36.5	26.5	0.0
லலலலலலலலலலலலVavuniya	36.0	25.3	0.0
லலலலலலலலலலலலMattla	34.0	25.1	0.0
லலலலலலலலலலலல Mullaithivu	36.9	26.5	0.0

லலலல ஠லலலல ஠லல ஠ுந்஠ ஠ுந்஠ ஠ுந்஠ ஠ுந்஠ Hydro Catchment Areas

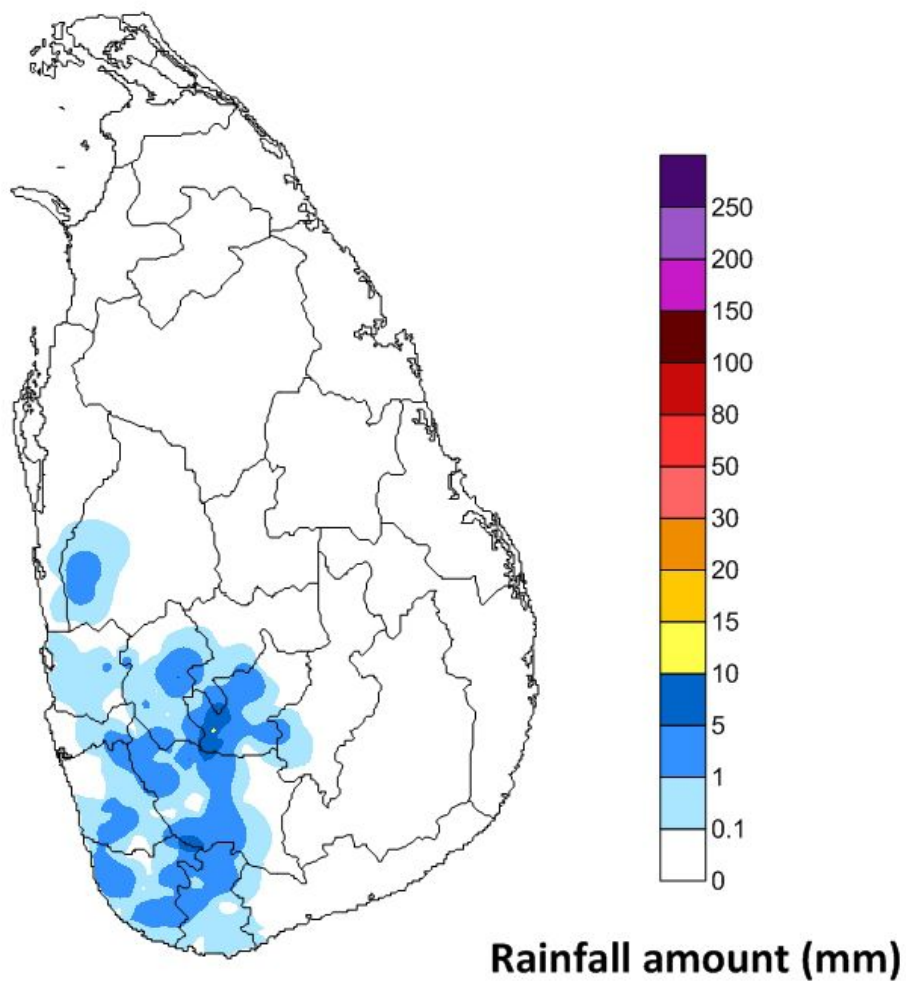
லலலலலல ஈ' ஠லலல ஠ுந்஠ ஠ுந்஠ ஠ுந்஠ Rainfall Stations	஠஠஠஠஠஠ - mm	லலலலலல ஈ' ஠லலல ஠ுந்஠ ஠ுந்஠ ஠ுந்஠ Rainfall Stations	஠஠஠஠஠஠ - mm
லலலலலலலலலலலலCastlereigh	3.0	லலலலலலலல ஠ுந்஠ ஠ுந்஠ ஠ுந்஠ Randenigala	0.0
லலலலலலலலலலலலNorton	8.3	லலலலலல ஠ுந்஠ ஠ுந்஠ ஠ுந்஠ Rantambe	0.0
லலலலலலலலலலலல Maussakele	2.5	லலலலலல ஠ுந்஠ ஠ுந்஠ ஠ுந்஠ Bowatenna	0.0
லலலலலலலலலலலலCanyon	10.4	லலலலலல ஠ுந்஠ ஠ுந்஠ ஠ுந்஠ Ukuwela	0.0
லலலலலலலலலலலலLakshapana	3.9	லலலலலல ஠ுந்஠ ஠ுந்஠ ஠ுந்஠ Samanala Wawa	0.0
லலலலலலலலலலலல Upper Kotmale	0.0	லலலலலல ஠ுந்஠ ஠ுந்஠ ஠ுந்஠ Kukuleganaga	0.0
லலலலலலலலலலலல Kotmale	0.0	லலலலலல ஠ுந்஠ ஠ுந்஠ ஠ுந்஠ Maskeliya	6.0
லலலலலலலலலலலல Victoriya	0.0	லலலலலல ஠ுந்஠ ஠ுந்஠ ஠ுந்஠ Neboda	NA

லலலலல ஠ுந்஠ ஠ுந்஠ ஠ுந்஠ ஠ுந்஠ ஠ுந்஠ Other Rainfall Stations

லலலலலல ஠ுந்஠ ஠ுந்஠ ஠ுந்஠ Rainfall Stations	஠஠஠஠஠஠ - mm	லலலலலல ஠ுந்஠ ஠ுந்஠ ஠ுந்஠ Rainfall Stations	஠஠஠஠஠஠ - mm
லலலலலல ஠ுந்஠ ஠ுந்஠ ஠ுந்஠ Watawala	9.1	லலலலலல ஠ுந்஠ ஠ுந்஠ ஠ுந்஠ Karagala	3.0
லலலலலல ஠ுந்஠ ஠ுந்஠ ஠ுந்஠ Guruluwana	5.8	லலலலலல ஠ுந்஠ ஠ுந்஠ ஠ுந்஠ Ambewela	2.0
லலலலலல ஠ுந்஠ ஠ுந்஠ ஠ுந்஠ Kotagala Rosita	5.0	லலலலலல ஠ுந்஠ ஠ுந்஠ ஠ுந்஠ Nittambuwa	1.7
லலலலலல ஠ுந்஠ ஠ுந்஠ ஠ுந்஠ Deniyaya	4.5	லலலலலல ஠ுந்஠ ஠ுந்஠ ஠ுந்஠ Holmwood	1.5
லலலலலல ஠ுந்஠ ஠ுந்஠ ஠ுந்஠ Kamalasram	4.2	லலலலலல ஠ுந்஠ ஠ுந்஠ ஠ுந்஠ Hiniduma	1.0
லலலலலல ஠ுந்஠ ஠ுந்஠ ஠ுந்஠ Mathugama	4.0	லலலலலல ஠ுந்஠ ஠ுந்஠ ஠ுந்஠ Kuliyaipitiya	0.6
லலலலலல ஠ுந்஠ ஠ுந்஠ ஠ுந்஠ Helboda North	4.0	லலலலலல ஠ுந்஠ ஠ுந்஠ ஠ுந்஠ Mapalana	0.5
லலலலலல ஠ுந்஠ ஠ுந்஠ ஠ுந்஠ Ilubuluwa Estate	3.9	லலலலலல ஠ுந்஠ ஠ுந்஠ ஠ுந்஠ Batuawangala	0.3
லலலலலல ஠ுந்஠ ஠ுந்஠ ஠ுந்஠ Thalangaha Estate	3.8	லலலலலல ஠ுந்஠ ஠ுந்஠ ஠ுந்஠ Point Pedro	0.0
லலலலலல ஠ுந்஠ ஠ுந்஠ ஠ுந்஠ Labugama	3.0	லலலலலல ஠ுந்஠ ஠ுந்஠ ஠ுந்஠ Nainathive	0.0

஠லலல ஠ுந்஠ ஠ுந்஠ / ஠ுந்஠ ஠ுந்஠ ஠ுந்஠ / Highest Rainfall : 13.0 mm ஠ுந்஠ ஠ுந்஠ ஠ுந்஠ Maskeliya (Nuwara Eliya) AWS

**Rainfall distribution over the period of 24 hours
ending at 8.30 a.m. on 05-08-2021**



**Department of Meteorology
Sri Lanka**