

Weather Forecast For Fishery and Naval Community

Marine weather forecast for sea areas around the island

Issued at 04.00 p.m. on 21 November 2020

Bulletin No: 03.

WW/TC/20/11/21/03

COLOR: **Amber**

Advisory for Heavy rain, Strong winds and Rough seas

Issued by the Natural Hazards Early Warning Centre

Issued at 3.30 p.m. 21st November 2020

For Eastern-Northern Sea areas

PLEASE BE AWARE!

The disturbance over southeast Bay of Bengal has developed into a Low Pressure Area (2N-10N, 83E-93E) in the morning today. (0300UTC, 21-11-2020). It is expected to intensify further into a depression during next 24-48 hours. The system is likely to move west-northwestwards towards Eastern and Northern coast of Sri Lanka on 24 of November.

ADVICES:

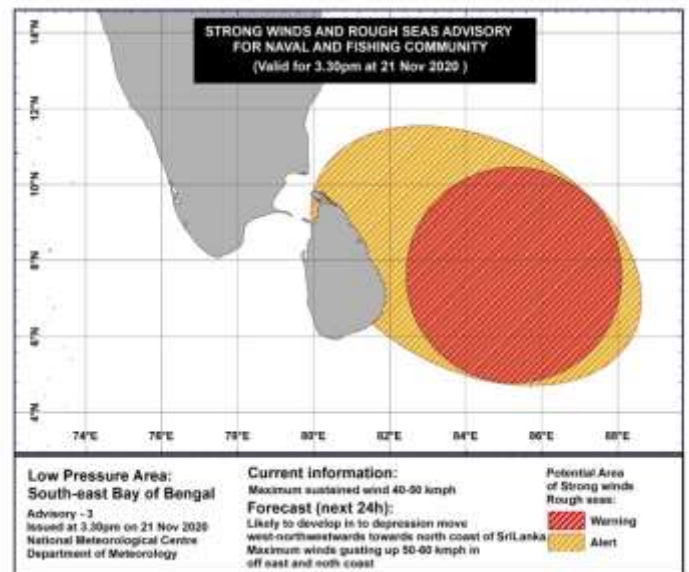
Under the influence of aforementioned system, possibility for heavy showers or thundershowers and sudden roughness, associated with sudden increase of wind speed up to (50-60)kmph is high over Eastern and Northern, deep and shallow sea areas around the island during next 24hours. These winds are likely to increase further as the system intensifies

There is a possibility that near shore sea areas off the coast extending from Kankesanthurai to Pottuvil via Trincomalee may experience surges due to the effect of swell waves, having (2.0-3.0) m height during 23rd -25th of November.

ACTION SUGGESTED:

- **Naval and fishing communities are advised not to venture into the Eastern and Northern sea areas from tonight (21 Nov 2020).**
- Those who are out at aforementioned sea regions are advised to return to coasts or moved safer areas immediately.
- Naval and fishing communities are requested to be attentive about future advisories issued by the Department of Meteorology in this regard.
-

The next bulletin will be issued at 3.00 pm at 22nd November 2020.



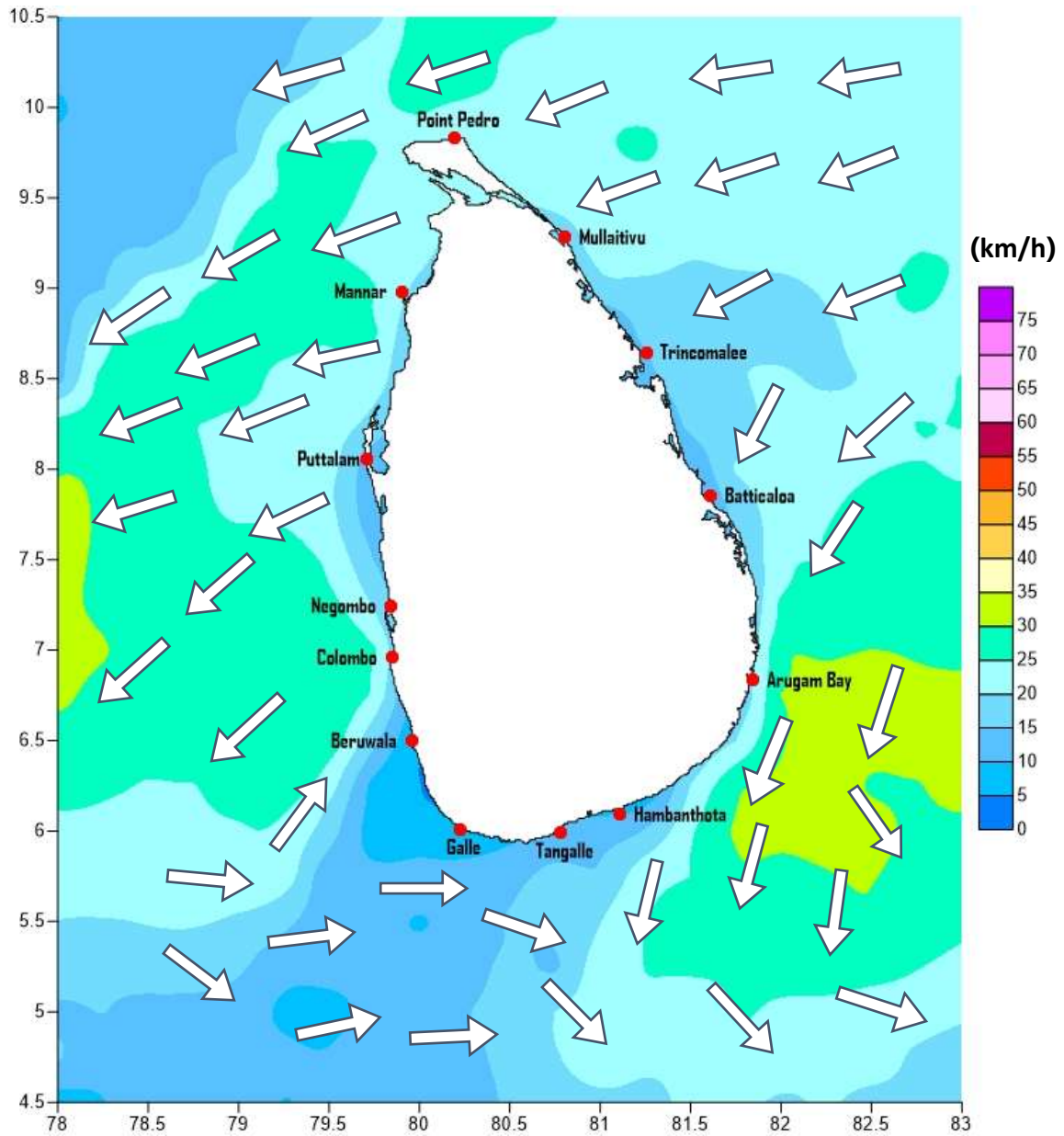
Marine Division
Department of Meteorology
Colombo 07, Sri Lanka
+94 112686686

For Safer Shipping



Weather Forecast For Fishery and Naval Community

Marine weather forecast for 05.30 a.m. to 05.30 p.m. on 22/11/2020



Marine Division
Department of Meteorology
Colombo 07, Sri Lanka
+94 112686686

For Safer Shipping



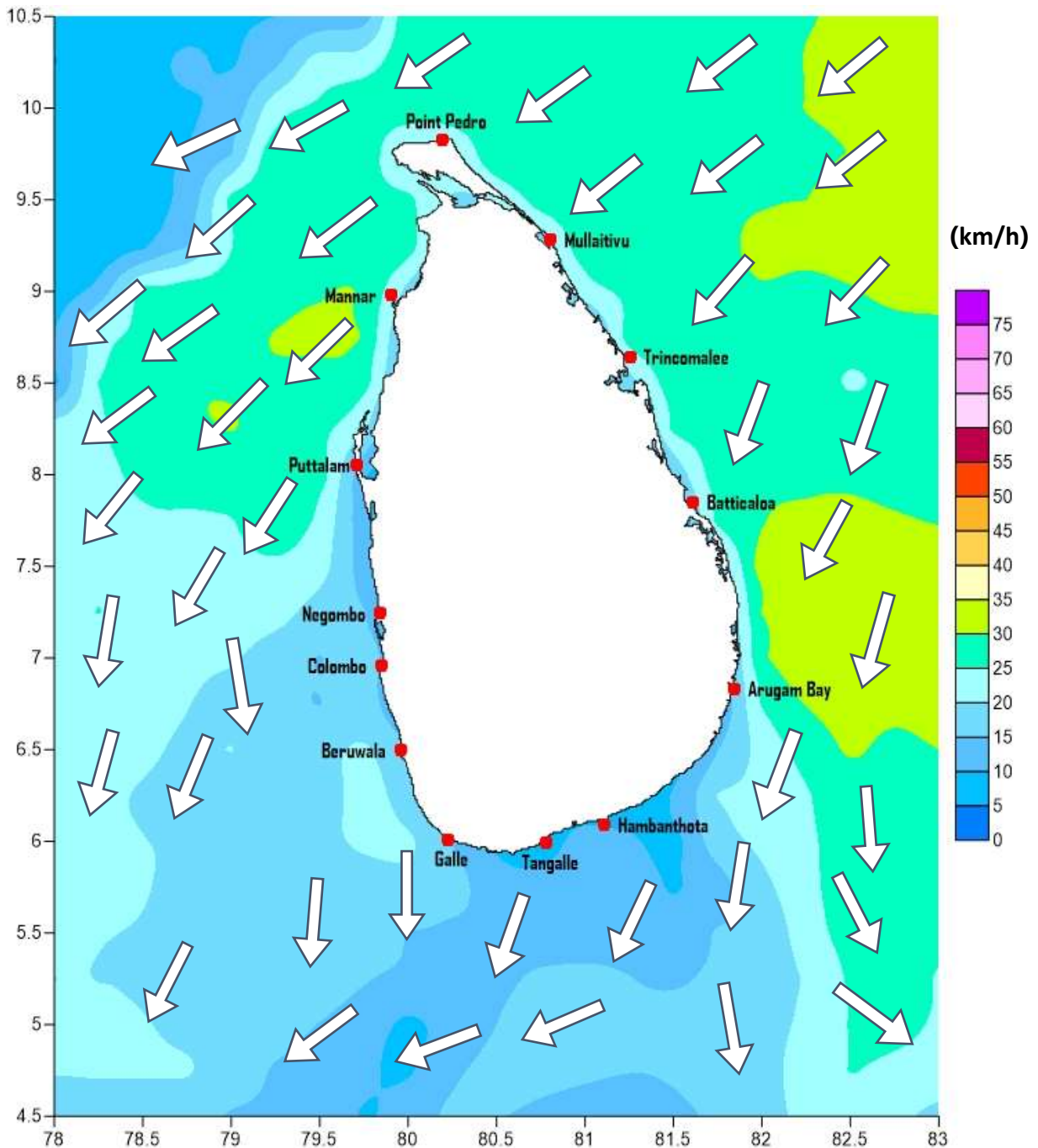
Weather Forecast For Fishery and Naval Community

Sea Area	Wind Speed	Wave Height	Sea Condition	Weather
Puttalam to Mannar	30-40 kmph. 50 kmph at times.	1.25- 2.5 m, 3.5 m at times	Moderate, fairly rough at times.	Showers or thundershowers may occur at several places in the afternoon.
Mannar to Kankasanthurai	30-40 kmph. 50 kmph at times.	1.25- 2.5 m, 3.5 m at times	Moderate, fairly rough at times.	Showers or thundershowers may occur at several places in the afternoon.
Kankasanthurai to Trincomalee	30-40 kmph. 50-60 kmph at times.	1.25- 2.5 m, 4.5 m at times	Moderate; Rough at times.	Showers will occur at several places.
Trincomalee to Batticaloa	30-40 kmph. 50-60 kmph at times.	1.25- 2.5 m, 4.5 m at times	Moderate; Rough at times.	Showers will occur at several places.
Batticaloa to Pottuvil	30-40 kmph. 50-60 kmph at times.	1.25- 2.5 m, 4.5 m at times	Moderate; Rough at times.	Showers or thundershowers will occur at times
Pottuvil to Hambantota	30-40 kmph. 50-60 kmph at times.	1.25- 2.5 m, 4.5 m at times	Moderate; Rough at times.	Showers will occur at several places. Fairly heavy falls are likely.
Hambantota to Galle	30-40 kmph.	1.25- 2.5 m.	Moderate.	Showers or thundershowers will occur at several places in the afternoon.
Galle to Colombo	30-40 kmph.	1.25- 2.5 m.	Moderate.	Showers or thundershowers will occur at several places in the afternoon.
Colombo to Puttalam	30-40 kmph. 50 kmph at times.	1.25- 2.5 m, 3.5 m at times	Moderate, fairly rough at times.	Showers or thundershowers will occur at several places in the afternoon.



Weather Forecast For Fishery and Naval Community

Marine weather forecast for 05.30 p.m. on 23/11/2020 to 05.30 a.m. on 23/11/2020



Marine Division
Department of Meteorology
Colombo 07, Sri Lanka
+94 112686686

For Safer Shipping



Weather Forecast For Fishery and Naval Community

Sea Area	Wind Speed	Wave Height	Sea Condition	Weather
Puttalam to Mannar	30-40 kmph. 50 kmph at times.	1.25- 2.5 m, 3.5 m at times	Moderate, fairly rough at times.	Showers or thunder showers will occur in the evening or night.
Mannar to Kankasanthurai	30-40 kmph. 50 kmph at times.	1.25- 2.5 m, 3.5 m at times	Moderate, fairly rough at times.	Few showers are likely in the afternoon.
Kankasanthurai to Trincomalee	30-40 kmph. 50-60 kmph at times.	1.25- 2.5 m, 4.5 m at times	Moderate; Rough at times.	Showers will occur at several places. Fairly heavy falls are likely.
Trincomalee to Batticaloa	30-40 kmph. 50-60 kmph at times.	1.25- 2.5 m, 4.5 m at times	Moderate; Rough at times.	Showers will occur at several places. Fairly heavy falls are likely.
Batticaloa to Pottuvil	30-40 kmph. 50-60 kmph at times.	1.25- 2.5 m, 4.5 m at times	Moderate; Rough at times.	Showers will occur at several places. Fairly heavy falls are likely.
Pottuvil to Hambantota	30-40 kmph. 50-60 kmph at times.	1.25- 2.5 m, 4.5 m at times	Moderate; Rough at times.	Showers will occur at several places. Fairly heavy falls are likely.
Hambantota to Galle	30-40 kmph.	1.25- 2.5 m.	Moderate.	Showers or thundershowers may occur at several places in the afternoon.
Galle to Colombo	30-40 kmph.	1.25- 2.5 m.	Moderate.	Showers or thundershowers may occur at several places in the afternoon.
Colombo to Puttalam	30-40 kmph. 50 kmph at times.	1.25- 2.5 m, 3.5 m at times	Moderate, fairly rough at times.	Showers or thunder showers will occur in the evening or night.

****Temporarily strong gusty winds (up to 60 -70 kmph) and very rough seas can be expected during Thundershowers.**

Marine Division
Department of Meteorology
Colombo 07, Sri Lanka
+94 112686686

For Safer Shipping

