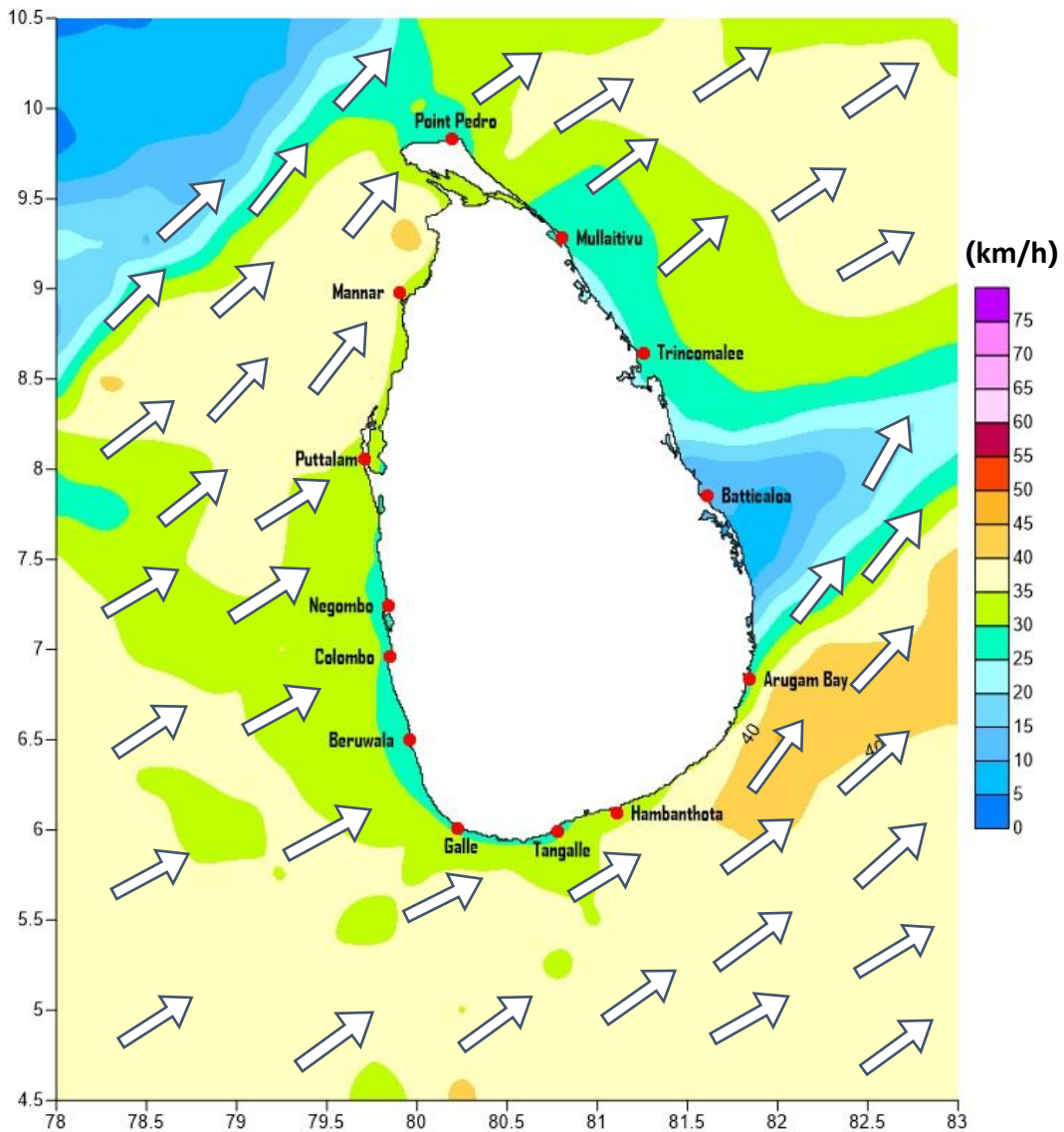


Weather Forecast For Fishery and Naval Community

Marine weather forecast for sea areas around the island
Issued at 04.00 p.m. on 14 October 2021

Marine weather forecast for 05.30 a.m. to 05.30 p.m. on 15/10/2021



Marine Division
Department of Meteorology
Colombo 07, Sri Lanka
+94 112686686

For Safer Shipping



Weather Forecast For Fishery and Naval Community

Sea Area	Wind Speed	Wave Height	Sea Condition	Weather
Puttalam to Mannar	30-40 kmph; 60 kmph at times.	1.25-2.5 m; 4.5 m at times.	Fairly rough; rough at times.	A few showers are likely.
Mannar to Kankasanthurai	30-40 kmph; 60 kmph at times.	1.25-2.5 m; 4.5 m at times.	Fairly rough; rough at times.	A few showers are likely.
Kankasanthurai to Trincomalee	30-40 kmph.	1.25-2.5 m.	Moderate.	Mainly fair.
Trincomalee to Batticaloa	30-40 kmph.	1.25-2.5 m.	Moderate.	Mainly fair.
Batticaloa to Pottuvil	30-40 kmph.	1.25-2.5 m.	Moderate.	Mainly fair.
Pottuvil to Hambantota	30-40 kmph; 60 kmph at times.	1.25-2.5 m; 4.5 m at times.	Fairly rough; rough at times.	Mainly fair.
Hambantota to Galle	30-40 kmph; 60 kmph at times.	1.25-2.5 m; 4.5 m at times.	Fairly rough; rough at times.	Several spells of showers
Galle to Colombo	30-40 kmph; 60 kmph at times.	1.25-2.5 m; 4.5 m at times.	Fairly rough; rough at times.	Several spells of showers
Colombo to Puttalam	30-40 kmph; 60 kmph at times.	1.25-2.5 m; 4.5 m at times.	Fairly rough; rough at times.	Several spells of showers

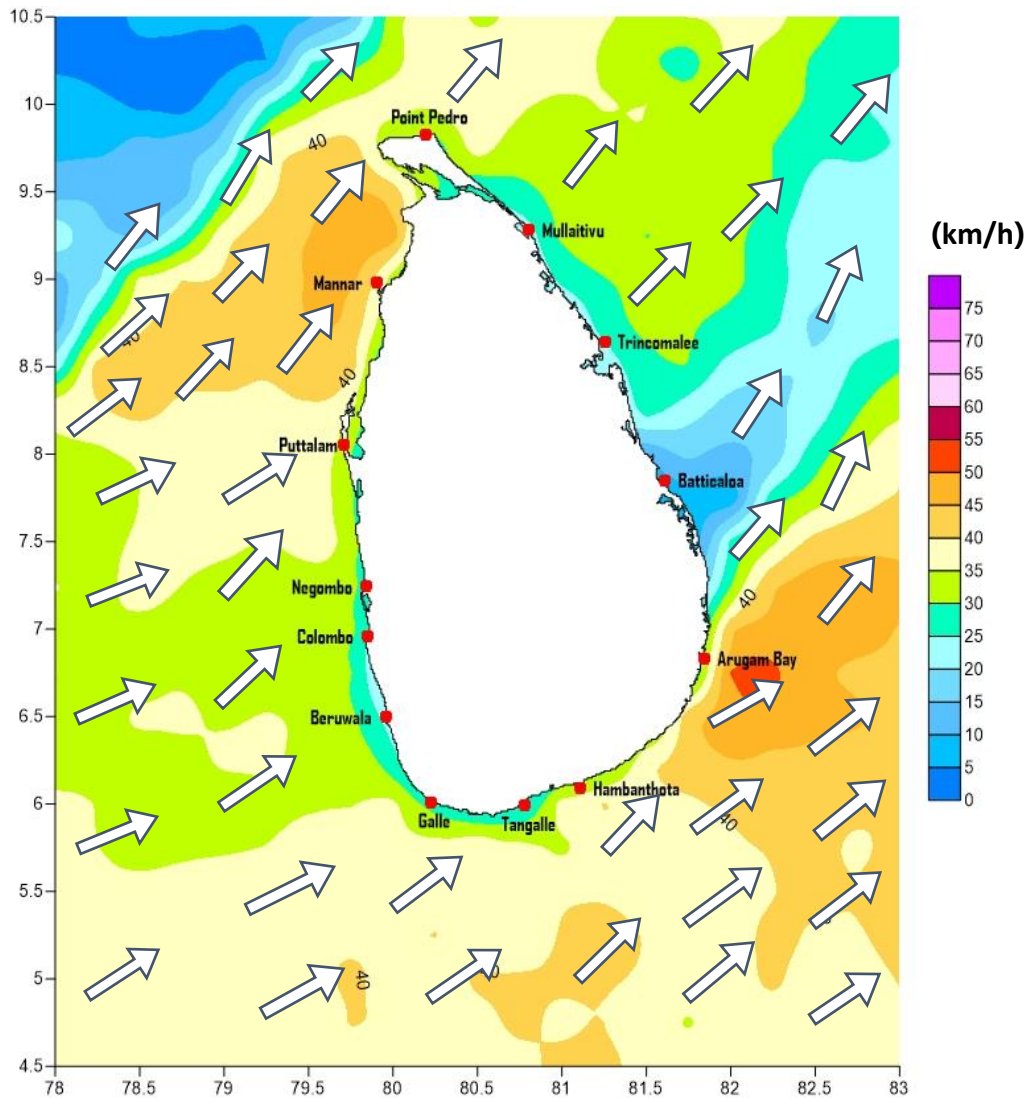
Marine Division
Department of Meteorology
Colombo 07, Sri Lanka
+94 112686686

For Safer Shipping



Weather Forecast For Fishery and Naval Community

Marine weather forecast for 05.30 p.m. on 15/10/2021 to 05.30 a.m. on 16/10/2021



Marine Division
Department of Meteorology
Colombo 07, Sri Lanka
+94 112686686

For Safer Shipping



Weather Forecast For Fishery and Naval Community

Sea Area	Wind Speed	Wave Height	Sea Condition	Weather
Puttalam to Mannar	35-45 kmph; 60-65 kmph at times.	2.25-3.0 m; 5.0 m at times.	Fairly rough; Rough to Very rough at times.	A few showers are likely.
Mannar to Kankasanthurai	35-45 kmph; 60-65 kmph at times.	2.25-3.0 m; 5.0 m at times.	Fairly rough; Rough to Very rough at times.	A few showers are likely.
Kankasanthurai to Trincomalee	30-40 kmph.	1.25-2.5 m.	Moderate.	Mainly fair.
Trincomalee to Batticaloa	30-40 kmph.	1.25-2.5 m.	Moderate.	Mainly fair.
Batticaloa to Pottuvil	30-40 kmph.	1.25-2.5 m.	Moderate.	Mainly fair.
Pottuvil to Hambantota	40-50 kmph; 60-65 kmph at times.	2.5-3.5 m; 5.0 m at times.	Fairly rough; Rough to Very rough at times.	Mainly fair.
Hambantota to Galle	30-40 kmph; 60 kmph at times.	1.25-2.5 m; 4.5 m at times.	Fairly rough; rough at times.	Several spells of showers
Galle to Colombo	30-40 kmph; 60 kmph at times.	1.25-2.5 m; 4.5 m at times.	Fairly rough; rough at times.	Several spells of showers
Colombo to Puttalam	30-40 kmph; 60 kmph at times.	1.25-2.5 m; 4.5 m at times.	Fairly rough; rough at times.	Several spells of showers

Marine Division
Department of Meteorology
Colombo 07, Sri Lanka
+94 112686686

For Safer Shipping

