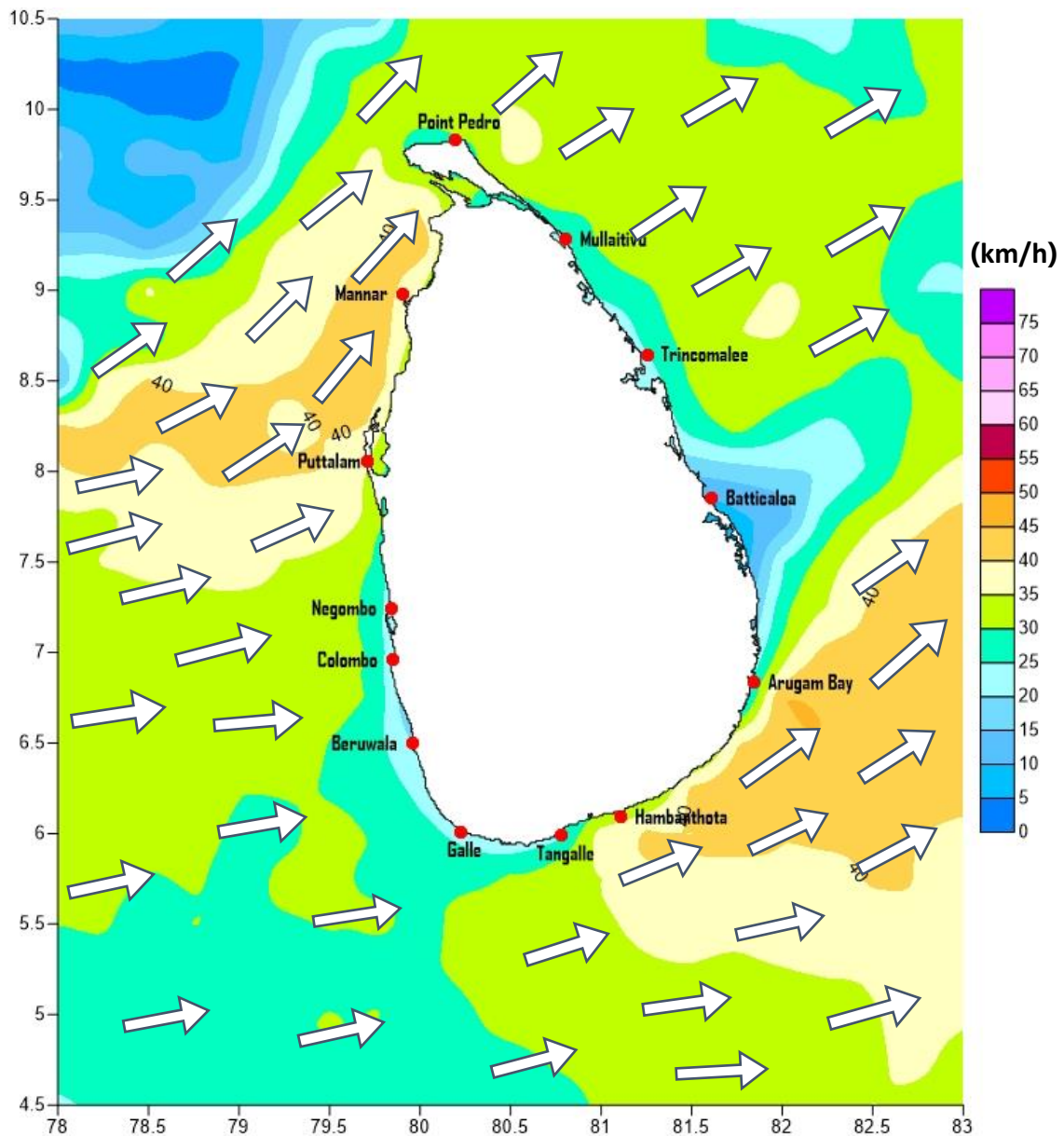


# Weather Forecast For Fishery and Naval Community

Marine weather forecast for sea areas around the island

Issued at 04.00 p.m. on 16 September 2020

Marine weather forecast for 05.30 a.m. to 05.30 p.m. on 17/09/2020



Marine Division  
Department of Meteorology  
Colombo 07, Sri Lanka  
+94 112686686

For Safer Shipping



## Weather Forecast For Fishery and Naval Community

Sea Area	Wind Speed	Wave Height	Sea Condition	Weather
Puttalam to Mannar	30-40 kmph; 50-60 kmph at times.	1.25-2.5 m; 4.0m at times.	Moderate; Rough at times.	Showers or thundershowers are likely at a few places.
Mannar to Kankasanthurai	30-40 kmph; 50-60 kmph at times.	1.25-2.5 m; 4.0m at times.	Moderate; Rough at times.	Few showers are likely
Kankasanthurai to Trincomalee	30-40 kmph; 50 kmph at times.	1.25-2.5 m; 3.5m at times.	Moderate; Fairly rough at times.	Few showers are likely
Trincomalee to Batticaloa	30-40 kmph.	1.25-2.5 m.	Moderate.	Few showers are likely
Batticaloa to Pottuvil	30-40 kmph.	1.25-2.5 m.	Moderate.	Few showers are likely
Pottuvil to Hambantota	35-40 kmph; 50-60 kmph at times.	2.25-3.0 m; 4.5 m at times.	Fairly rough; Rough at times.	Showers or thundershowers are likely at a few places.
Hambantota to Galle	30-40 kmph; 50-55 kmph at times.	1.25-2.5 m; 4.0m at times.	Moderate; Rough at times.	Showers or thundershowers will occur at several places.
Galle to Colombo	30-40 kmph; 50 kmph at times.	1.25-2.5 m; 3.5m at times.	Moderate; Fairly rough at times.	Showers or thundershowers will occur at times.
Colombo to Puttalam	30-40 kmph; 50-55 kmph at times.	1.25-2.5 m; 4.0m at times.	Moderate; Rough at times.	Showers or thundershowers will occur at several places.

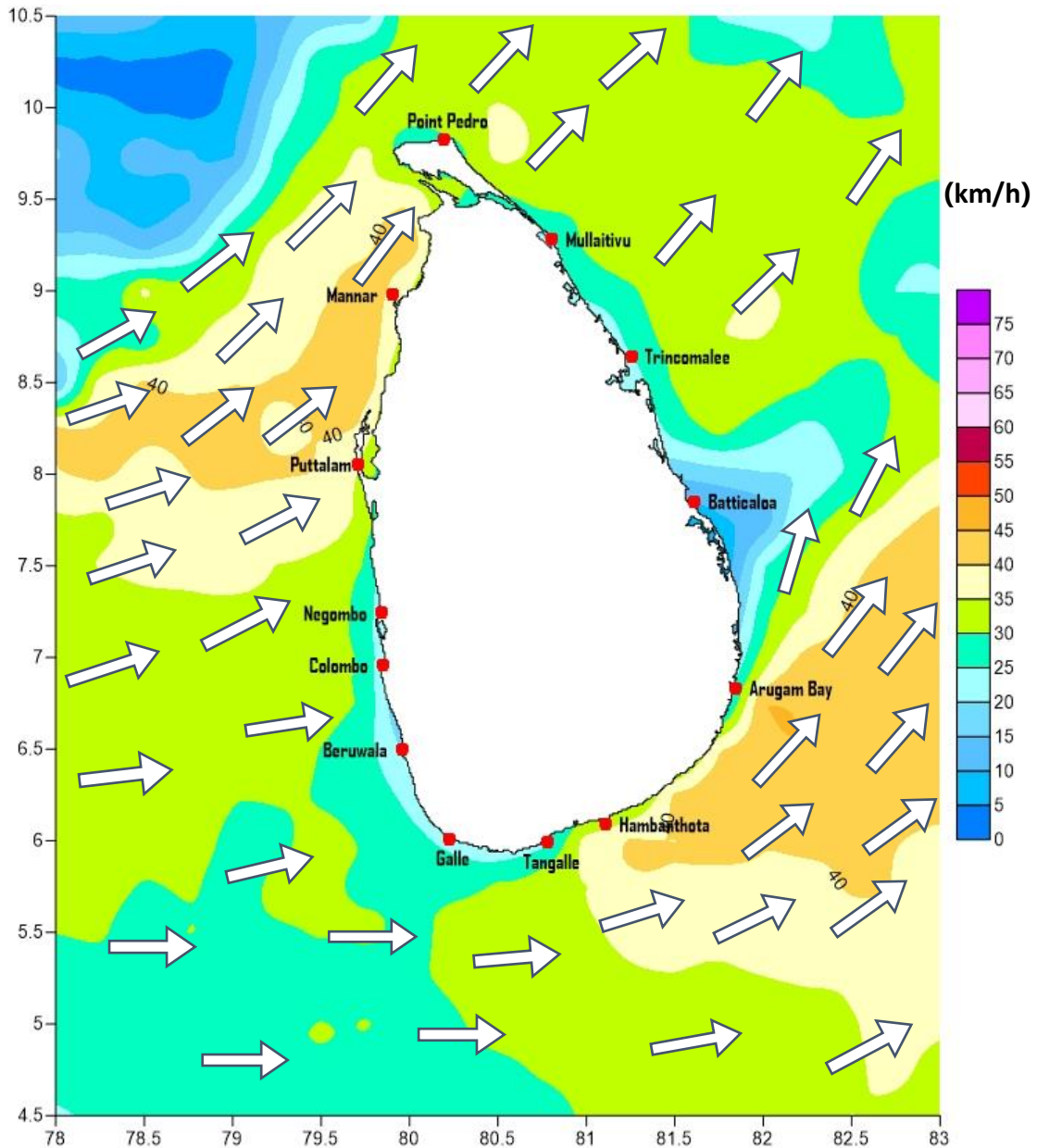
Marine Division  
Department of Meteorology  
Colombo 07, Sri Lanka  
+94 112686686

**For Safer Shipping**



# Weather Forecast For Fishery and Naval Community

Marine weather forecast for 05.30 p.m. on 17/09/2020 to 05.30 a.m. on 18/09/2020



Marine Division  
Department of Meteorology  
Colombo 07, Sri Lanka  
+94 112686686

For Safer Shipping



## Weather Forecast For Fishery and Naval Community

Sea Area	Wind Speed	Wave Height	Sea Condition	Weather
Puttalam to Mannar	35-40 kmph; 50-60 kmph at times.	2.25-3.0 m; 4.5 m at times.	Fairly rough; Rough at times.	Showers or thundershowers are likely at a few places.
Mannar to Kankasanthurai	35-40 kmph; 50-60 kmph at times.	2.25-3.0 m; 4.5 m at times.	Fairly rough; Rough at times.	Showers or thundershowers are likely at a few places.
Kankasanthurai to Trincomalee	30-40 kmph; 50 kmph at times.	1.25-2.5 m; 3.5m at times.	Moderate; Fairly rough at times.	Showers or thundershowers are likely at a few places.
Trincomalee to Batticaloa	30-40 kmph.	1.25-2.5 m.	Moderate.	Few showers are likely
Batticaloa to Pottuvil	30-40 kmph.	1.25-2.5 m.	Moderate.	Few showers are likely
Pottuvil to Hambantota	35-40 kmph; 50-60 kmph at times.	2.25-3.0 m; 4.5 m at times.	Fairly rough; Rough at times.	Showers or thundershowers are likely at a few places.
Hambantota to Galle	30-40 kmph; 50-55 kmph at times.	1.25-2.5 m; 4.0m at times.	Moderate; Rough at times.	Showers or thundershowers will occur at several places.
Galle to Colombo	30-40 kmph; 50 kmph at times.	1.25-2.5 m; 3.5m at times.	Moderate; Fairly rough at times.	Showers or thundershowers will occur at several places.
Colombo to Puttalam	30-40 kmph; 50-55 kmph at times.	1.25-2.5 m; 4.0m at times.	Moderate; Rough at times.	Showers or thundershowers are likely at a few places.

**\*\*Temporarily strong gusty winds (up to 70-80 kmph) and very rough seas can be expected during thundershowers.**

Marine Division  
Department of Meteorology  
Colombo 07, Sri Lanka  
+94 112686686

**For Safer Shipping**

