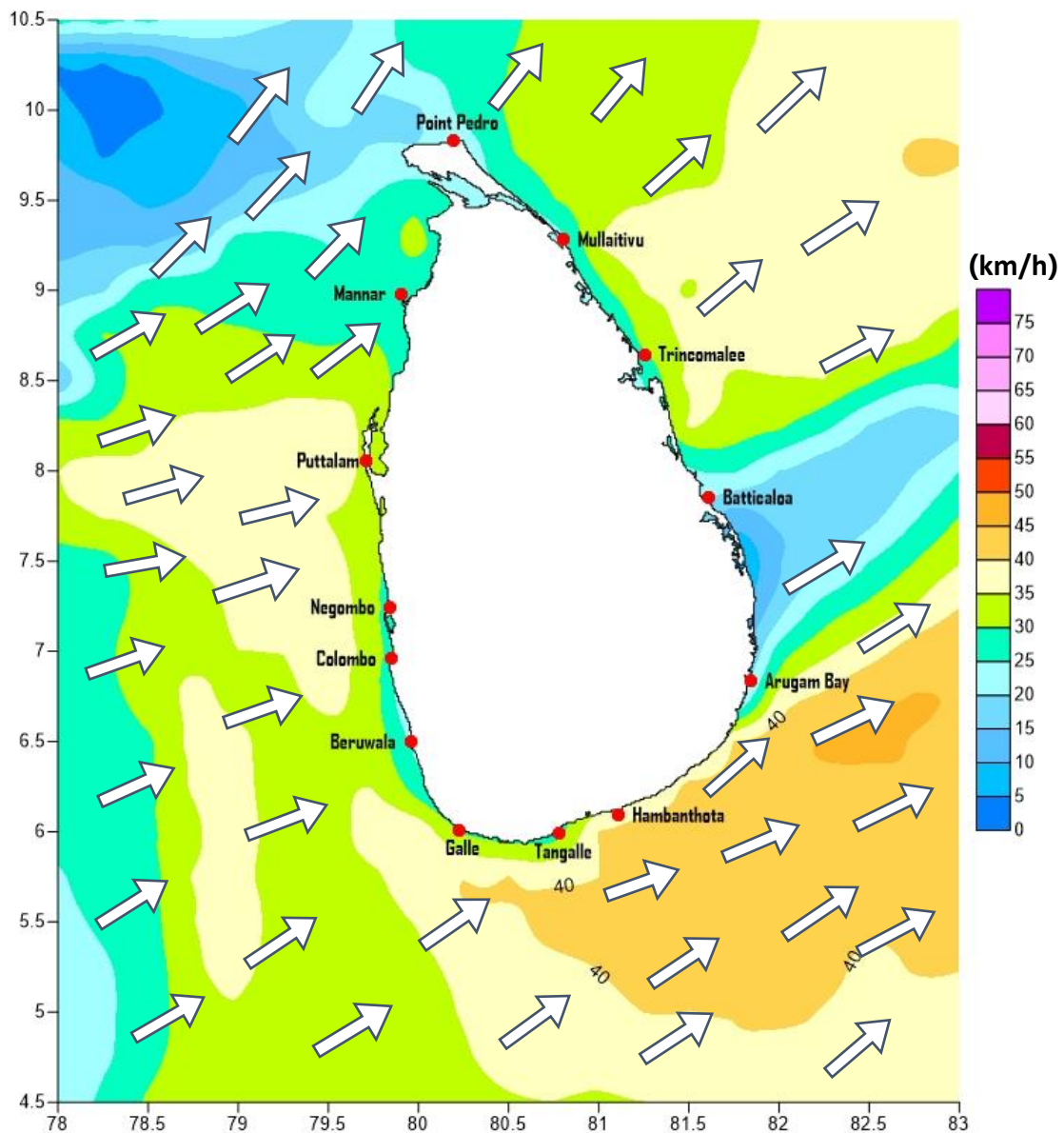


Weather Forecast For Fishery and Naval Community

Marine weather forecast for sea areas around the island
Issued at 04.00 p.m. on 04 August 2021

Marine weather forecast for 05.30 a.m. to 05.30 p.m. on 05/08/2021



Marine Division
Department of Meteorology
Colombo 07, Sri Lanka
+94 112686686

For Safer Shipping



Weather Forecast For Fishery and Naval Community

Sea Area	Wind Speed	Wave Height	Sea Condition	Weather
Puttalam to Mannar	30-40 kmph; 50 kmph at times.	1.25-2.5 m; 3.5m at times.	Moderate; Fairly rough at times.	Mainly fair.
Mannar to Kankasanthurai	30-40 kmph; 50 kmph at times.	1.25-2.5 m; 3.5m at times.	Moderate; Fairly rough at times.	Mainly fair.
Kankasanthurai to Trincomalee	20-30 kmph.	0.75-1.25 m.	Slight.	Mainly fair.
Trincomalee to Batticaloa	20-30 kmph.	0.75-1.25 m.	Slight.	Mainly fair.
Batticaloa to Pottuvil	20-30 kmph.	0.75-1.25 m.	Slight.	Mainly fair.
Pottuvil to Hambantota	30-40 kmph; 60 kmph at times.	1.25-2.5 m; 4.5 m at times.	Moderate; Rough at times.	Mainly fair.
Hambantota to Galle	30-40 kmph; 60 kmph at times.	1.25-2.5 m; 4.5 m at times.	Moderate; Rough at times.	A few showers are likely.
Galle to Colombo	30-40 kmph.	1.25-2.5 m.	Moderate.	Showers or thundershowers will occur at several places.
Colombo to Puttalam	30-40 kmph; 50 kmph at times.	1.25-2.5 m; 3.5m at times.	Moderate; Fairly rough at times.	A few showers are likely.

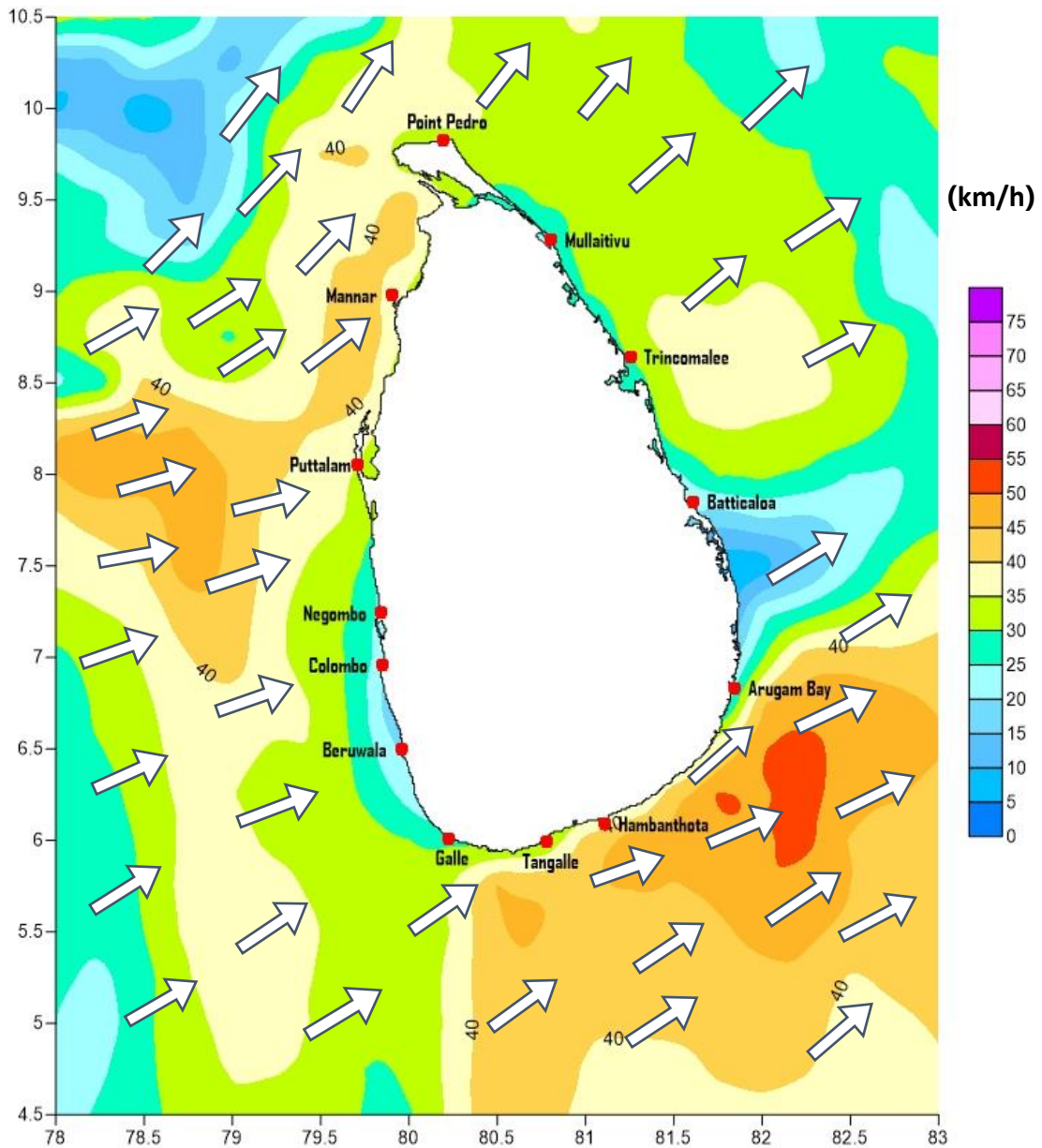
Marine Division
Department of Meteorology
Colombo 07, Sri Lanka
+94 112686686

For Safer Shipping



Weather Forecast For Fishery and Naval Community

Marine weather forecast for 05.30 p.m. on 05/08/2021 to 05.30 a.m. on 06/08/2021



Marine Division
Department of Meteorology
Colombo 07, Sri Lanka
+94 112686686

For Safer Shipping



Weather Forecast For Fishery and Naval Community

Sea Area	Wind Speed	Wave Height	Sea Condition	Weather
Puttalam to Mannar	30-40 kmph; 50 kmph at times.	1.25-2.5 m; 3.5m at times.	Moderate; Fairly rough at times.	Mainly fair.
Mannar to Kankasanthurai	30-40 kmph; 50 kmph at times.	1.25-2.5 m; 3.5m at times.	Moderate; Fairly rough at times.	Mainly fair.
Kankasanthurai to Trincomalee	20-30 kmph.	0.75-1.25 m.	Slight.	Mainly fair.
Trincomalee to Batticaloa	20-30 kmph.	0.75-1.25 m.	Slight.	Mainly fair.
Batticaloa to Pottuvil	20-30 kmph.	0.75-1.25 m.	Slight.	Mainly fair.
Pottuvil to Hambantota	30-40 kmph; 60 kmph at times.	1.25-2.5 m; 4.5 m at times.	Moderate; Rough at times.	Mainly fair.
Hambantota to Galle	30-40 kmph; 60 kmph at times.	1.25-2.5 m; 4.5 m at times.	Moderate; Rough at times.	A few showers are likely.
Galle to Colombo	30-40 kmph.	1.25-2.5 m.	Moderate.	Showers or thundershowers will occur at several places.
Colombo to Puttalam	30-40 kmph; 50 kmph at times.	1.25-2.5 m; 3.5m at times.	Moderate; Fairly rough at times.	A few showers are likely.

****Temporarily strong gusty winds (up to 70-80 kmph) and very rough seas can be expected during thundershowers.**

Marine Division
Department of Meteorology
Colombo 07, Sri Lanka
+94 112686686

For Safer Shipping

