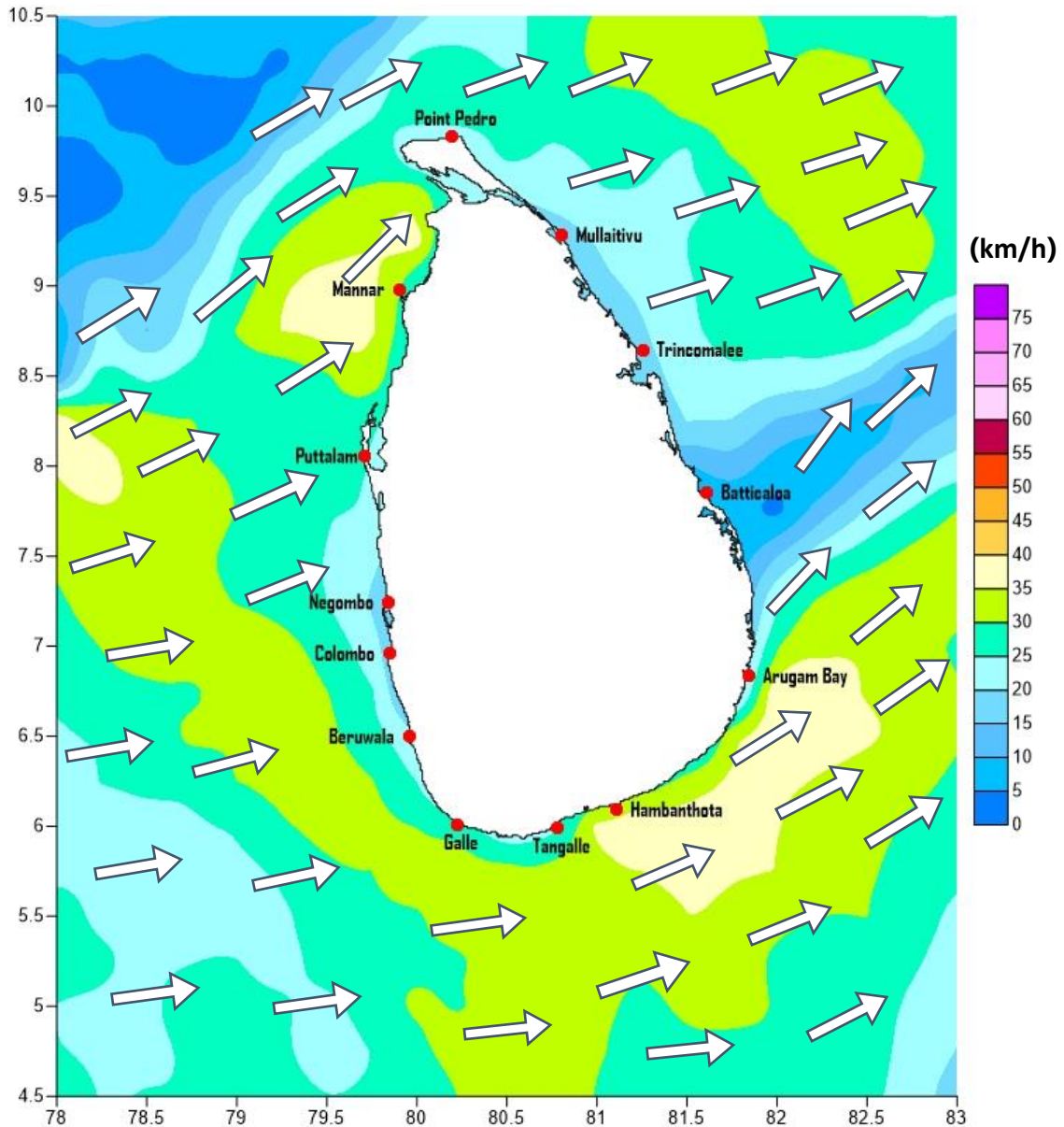


Weather Forecast For Fishery and Naval Community

Marine weather forecast for sea areas around the island

Issued at 04.00 p.m. on 20 September 2019

Marine weather forecast for 05.30 a.m. to 05.30 p.m. on 21/09/2019



Marine Division
Department of Meteorology
Colombo 07, Sri Lanka
+94 112686686

For Safer Shipping



Weather Forecast For Fishery and Naval Community

Sea Area	Wind Speed	Wave Height	Sea Condition	Weather
Puttalam to Mannar	30-40 kmph; 50-55 kmph at times.	1.25-2.5 m; 3.5-4.0 m at times.	Moderate; Rough at times.	Showers or thundershowers are likely at a few places in the morning.
Mannar to Kankasanthurai	30-40 kmph; 50-55 kmph at times.	1.25-2.5 m; 3.5-4.0 m at times.	Moderate; Rough at times.	Showers or thundershowers are likely at a few places in the morning.
Kankasanthurai to Trincomalee	30-40 kmph; 50 kmph at times.	1.25-2.5 m; 3.5m at times.	Moderate; Fairly rough at times.	Showers or thundershowers are likely at a few places in the afternoon.
Trincomalee to Batticaloa	30-40 kmph;	1.25-2.5 m;	Moderate;	Showers or thundershowers are likely at a few places in the afternoon.
Batticaloa to Pottuvil	30-40 kmph; 50 kmph at times.	1.25-2.5 m; 3.5m at times.	Moderate; Fairly rough at times.	Showers or thundershowers are likely at a few places in the afternoon.
Pottuvil to Hambantota	30-40 kmph; 50-55 kmph at times.	1.25-2.5 m; 3.5-4.0 m at times.	Moderate; Rough at times.	Showers or thundershowers are likely at several places.
Hambantota to Matara	30-40 kmph; 50-55 kmph at times.	1.25-2.5 m; 3.5-4.0 m at times.	Moderate; Rough at times.	Showers or thundershowers at several places.
Matara to Colombo	30-40 kmph;	1.25-2.5 m;	Moderate;	Showers or thundershowers at several places.
Colombo to Puttalam	30-40 kmph; 50 kmph at times.	1.25-2.5 m; 3.5m at times.	Moderate; Fairly rough at times.	Showers or thundershowers at several places.

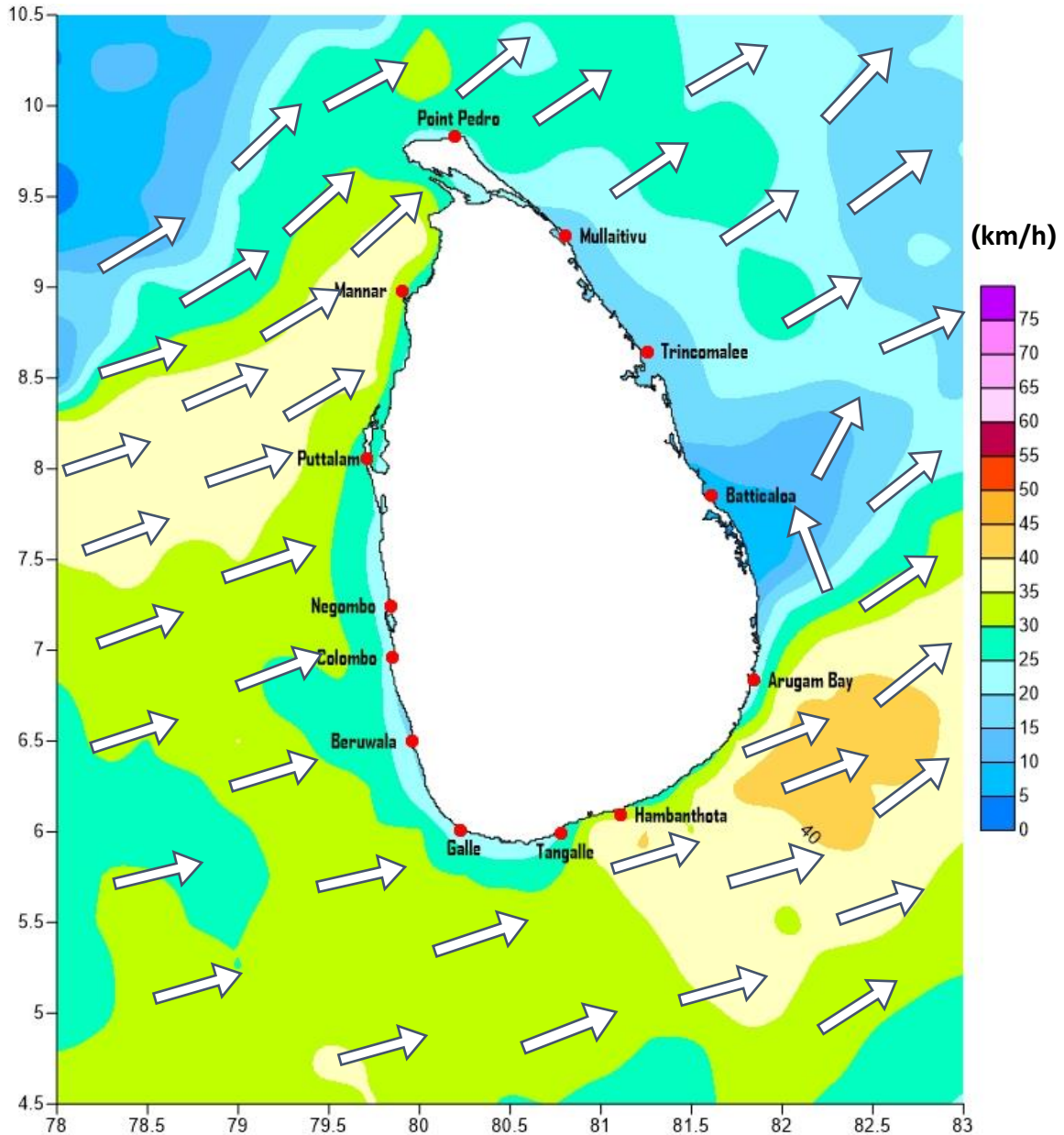
Marine Division
Department of Meteorology
Colombo 07, Sri Lanka
+94 112686686

For Safer Shipping



Weather Forecast For Fishery and Naval Community

Marine weather forecast for 05.30 p.m. on 21/09/2019 to 05.30 a.m. to 22/09/2019



Marine Division
Department of Meteorology
Colombo 07, Sri Lanka
+94 112686686

For Safer Shipping



Weather Forecast For Fishery and Naval Community

Sea Area	Wind Speed	Wave Height	Sea Condition	Weather
Puttalam to Mannar	30-40 kmph; 50-55 kmph at times.	1.25-2.5 m; 3.5-4.0 m at times.	Moderate; Rough at times.	Showers or thundershowers are likely at a few places.
Mannar to Kankasanthurai	30-40 kmph; 50-55 kmph at times.	1.25-2.5 m; 3.5-4.0 m at times.	Moderate; Rough at times.	Showers or thundershowers are likely at a few places.
Kankasanthurai to Trincomalee	30-40 kmph;	1.25-2.5 m;	Moderate;	Showers or thundershowers are likely at a few places in the evening or night.
Trincomalee to Batticaloa	30-40 kmph;	1.25-2.5 m;	Moderate;	Showers or thundershowers are likely at a few places in the evening or night.
Batticaloa to Pottuvil	30-40 kmph; 50-55 kmph at times.	1.25-2.5 m; 3.5-4.0 m at times.	Moderate; Rough at times.	Showers or thundershowers are likely at a few places in the evening or night.
Pottuvil to Hambantota	35-40 kmph; 50-60 kmph at times.	1.5-2.5 m; 3.5-4.5 m at times.	Fairly Rough; Rough at times.	Showers or thundershowers are likely at several places.
Hambantota to Tangalle	30-40 kmph; 50-60 kmph at times.	1.25-2.5 m; 3.5-4.5 m at times.	Moderate; Rough at times.	Showers or thundershowers at several places.
Tangalle to Colombo	30-40 kmph; 50 kmph at times.	1.25-2.5 m; 3.5m at times.	Moderate; Fairly rough at times.	Showers or thundershowers at several places.
Colombo to Puttalam	30-40 kmph; 50 kmph at times.	1.25-2.5 m; 3.5m at times.	Moderate; Fairly rough at times.	Showers or thundershowers are likely at several places.

**** Temporarily strong gusty winds and rough seas can be expected during thundershowers.**

Marine Division
Department of Meteorology
Colombo 07, Sri Lanka
+94 112686686

For Safer Shipping

