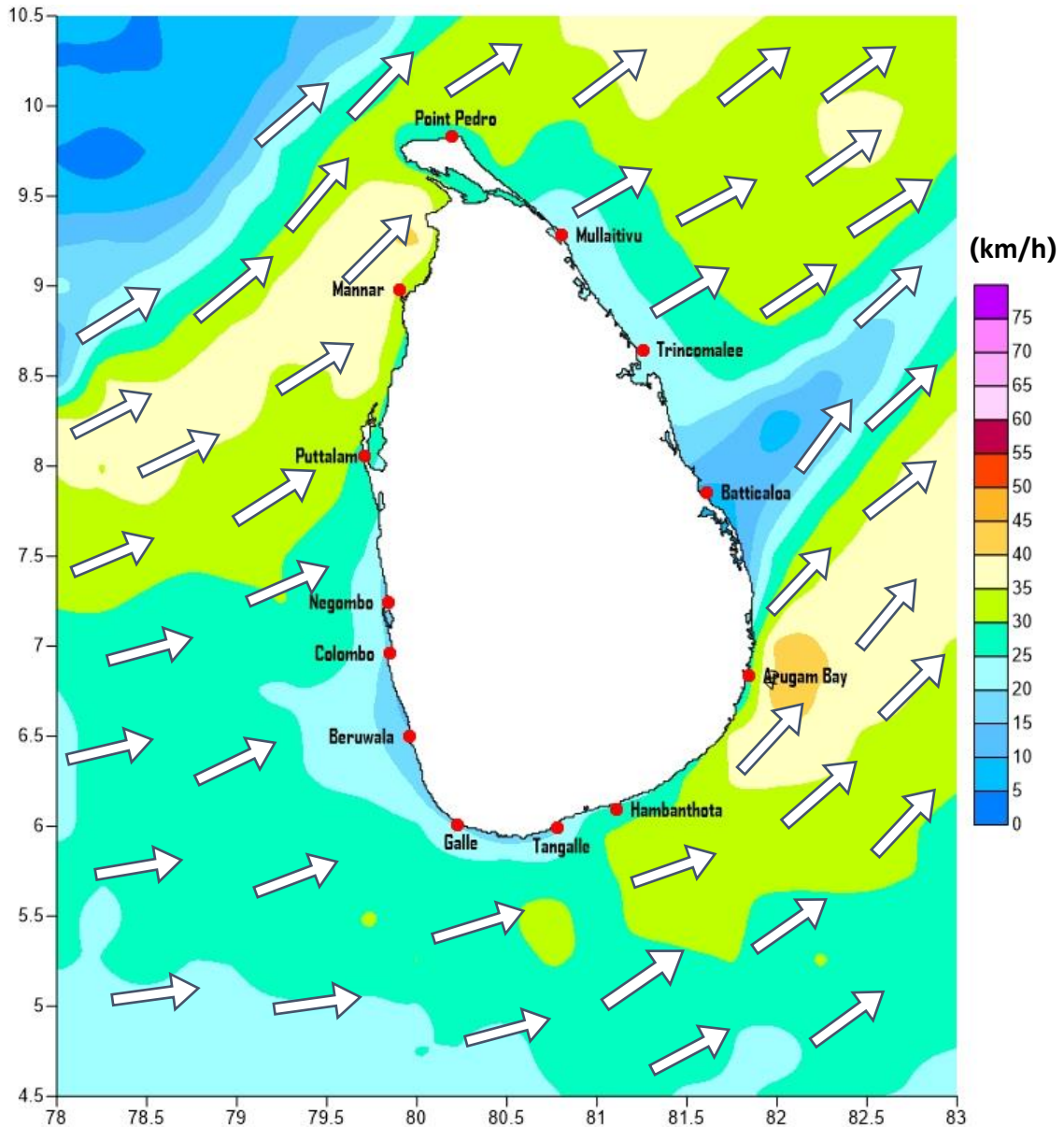


# Weather Forecast For Fishery and Naval Community

Marine weather forecast for sea areas around the island

Issued at 04.00 p.m. on 18 September 2019

Marine weather forecast for 05.30 a.m. to 05.30 p.m. on 19/09/2019



Marine Division  
Department of Meteorology  
Colombo 07, Sri Lanka  
+94 112686686

For Safer Shipping



# Weather Forecast For Fishery and Naval Community

Sea Area	Wind Speed	Wave Height	Sea Condition	Weather
<b>Puttalam to Mannar</b>	30-40 kmph; 50-55 kmph at times.	1.25-2.5 m; 3.5-4.0 m at times.	Moderate; Rough at times.	Showers or thundershowers are likely at a few places in the morning.
<b>Mannar to Kankasanthurai</b>	30-40 kmph; 50-55 kmph at times.	1.25-2.5 m; 3.5-4.0 m at times.	Moderate; Rough at times.	Showers or thundershowers are likely at a few places in the morning.
<b>Kankasanthurai to Trincomalee</b>	30-40 kmph; 50 kmph at times.	1.25-2.5 m; 3.5m at times.	Moderate; Fairly rough at times.	Showers or thundershowers are likely at several places in the morning.
<b>Trincomalee to Batticaloa</b>	30-40 kmph;	1.25-2.5 m;	Moderate;	Showers or thundershowers are likely at a few places in the afternoon.
<b>Batticaloa to Pottuvil</b>	30-40 kmph; 50 kmph at times.	1.25-2.5 m; 3.5m at times.	Moderate; Fairly rough at times.	Showers or thundershowers are likely at a few places in the afternoon.
<b>Pottuvil to Hambantota</b>	30-40 kmph; 50-60 kmph at times.	1.25-2.5 m; 3.5-4.5 m at times.	Moderate; Rough at times.	Showers or thundershowers are likely at several places.
<b>Hambantota to Matara</b>	30-40 kmph; 50-55 kmph at times.	1.25-2.5 m; 3.5-4.0 m at times.	Moderate; Rough at times.	Showers or thundershowers at several places.
<b>Matara to Colombo</b>	30-40 kmph;	1.25-2.5 m;	Moderate;	Showers or thundershowers at several places.
<b>Colombo to Puttalam</b>	30-40 kmph; 50 kmph at times.	1.25-2.5 m; 3.5m at times.	Moderate; Fairly rough at times.	Showers or thundershowers at several places.

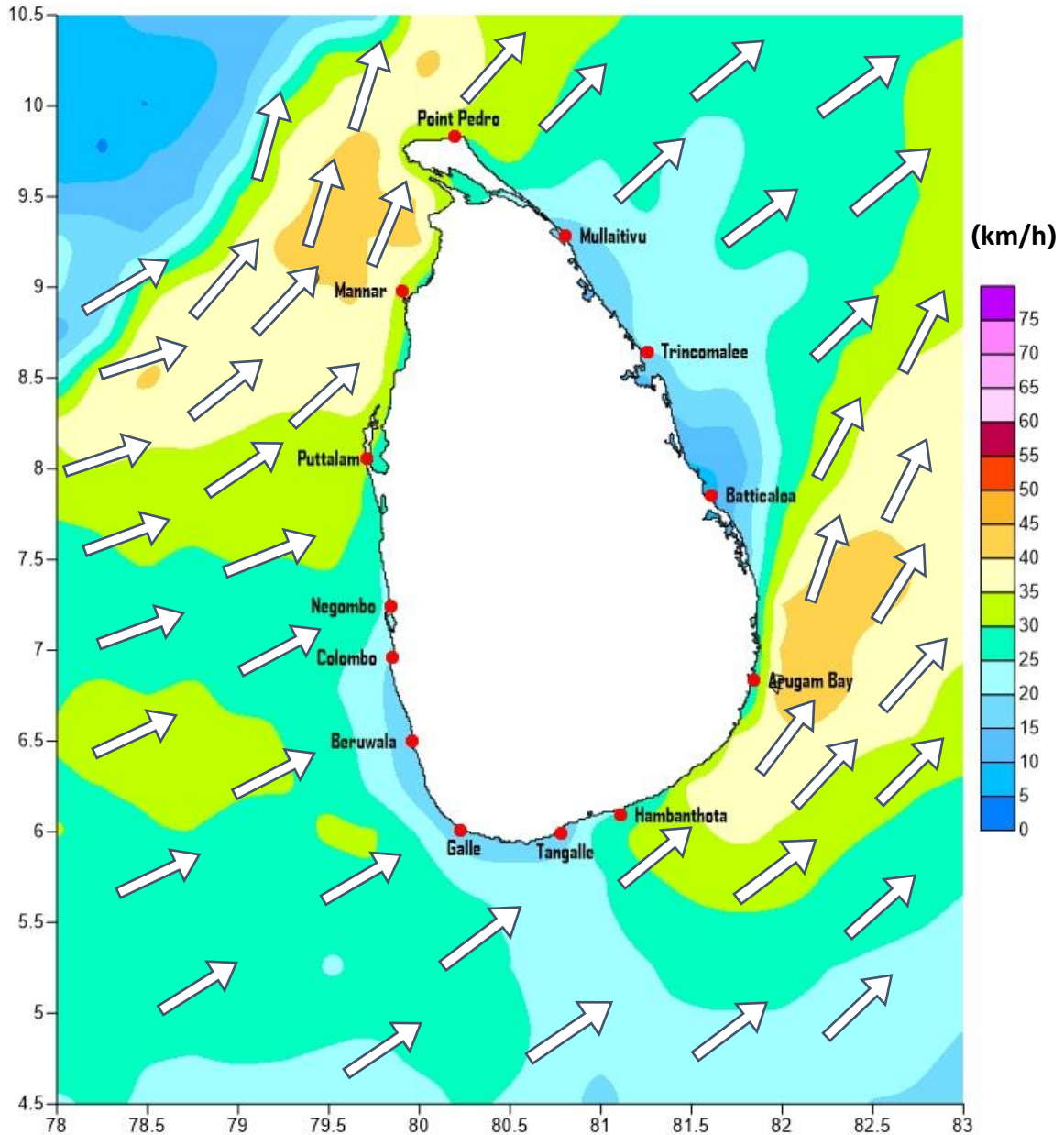
Marine Division  
Department of Meteorology  
Colombo 07, Sri Lanka  
+94 112686686

**For Safer Shipping**



# Weather Forecast For Fishery and Naval Community

Marine weather forecast for 05.30 p.m. on 19/09/2019 to 05.30 a.m. to 20/09/2019



Marine Division  
Department of Meteorology  
Colombo 07, Sri Lanka  
+94 112686686

For Safer Shipping



# Weather Forecast For Fishery and Naval Community

Sea Area	Wind Speed	Wave Height	Sea Condition	Weather
Puttalam to Mannar	30-40 kmph; 50-60 kmph at times.	1.25-2.5 m; 3.5-4.5 m at times.	Moderate; Rough at times.	Showers or thundershowers are likely at few places.
Mannar to Kankasanthurai	30-40 kmph; 50-55 kmph at times.	1.25-2.5 m; 3.5-4.0 m at times.	Moderate; Rough at times.	Showers or thundershowers are likely at few places.
Kankasanthurai to Trincomalee	30-40 kmph;	1.25-2.5 m;	Moderate;	Showers or thundershowers are likely at few places.
Trincomalee to Batticaloa	30-40 kmph;	1.25-2.5 m;	Moderate;	Showers or thundershowers are likely at a few places in the evening or night.
Batticaloa to Pottuvil	30-40 kmph; 50-55 kmph at times.	1.25-2.5 m; 3.5-4.0 m at times.	Moderate; Rough at times.	Showers or thundershowers are likely at a few places in the evening or night.
Pottuvil to Hambantota	35-40 kmph; 55-60 kmph at times.	1.5-2.5 m; 3.5-4.5 m at times.	Fairly Rough; Rough at times.	Showers or thundershowers are likely at several places.
Hambantota to Tangalle	30-40 kmph; 50-55 kmph at times.	1.25-2.5 m; 3.5-4.0 m at times.	Moderate; Rough at times.	Showers or thundershowers at several places.
Tangalle to Colombo	30-40 kmph;	1.25-2.5 m;	Moderate;	Showers or thundershowers at several places.
Colombo to Puttalam	30-40 kmph; 50 kmph at times.	1.25-2.5 m; 3.5m at times.	Moderate; Fairly rough at times.	Showers or thundershowers are likely at several places.

**\*\* Temporarily strong gusty winds and rough seas can be expected during thundershowers.**

Marine Division  
Department of Meteorology  
Colombo 07, Sri Lanka  
+94 112686686

**For Safer Shipping**

